



## Rostrevor Road, SW6

### £530,000

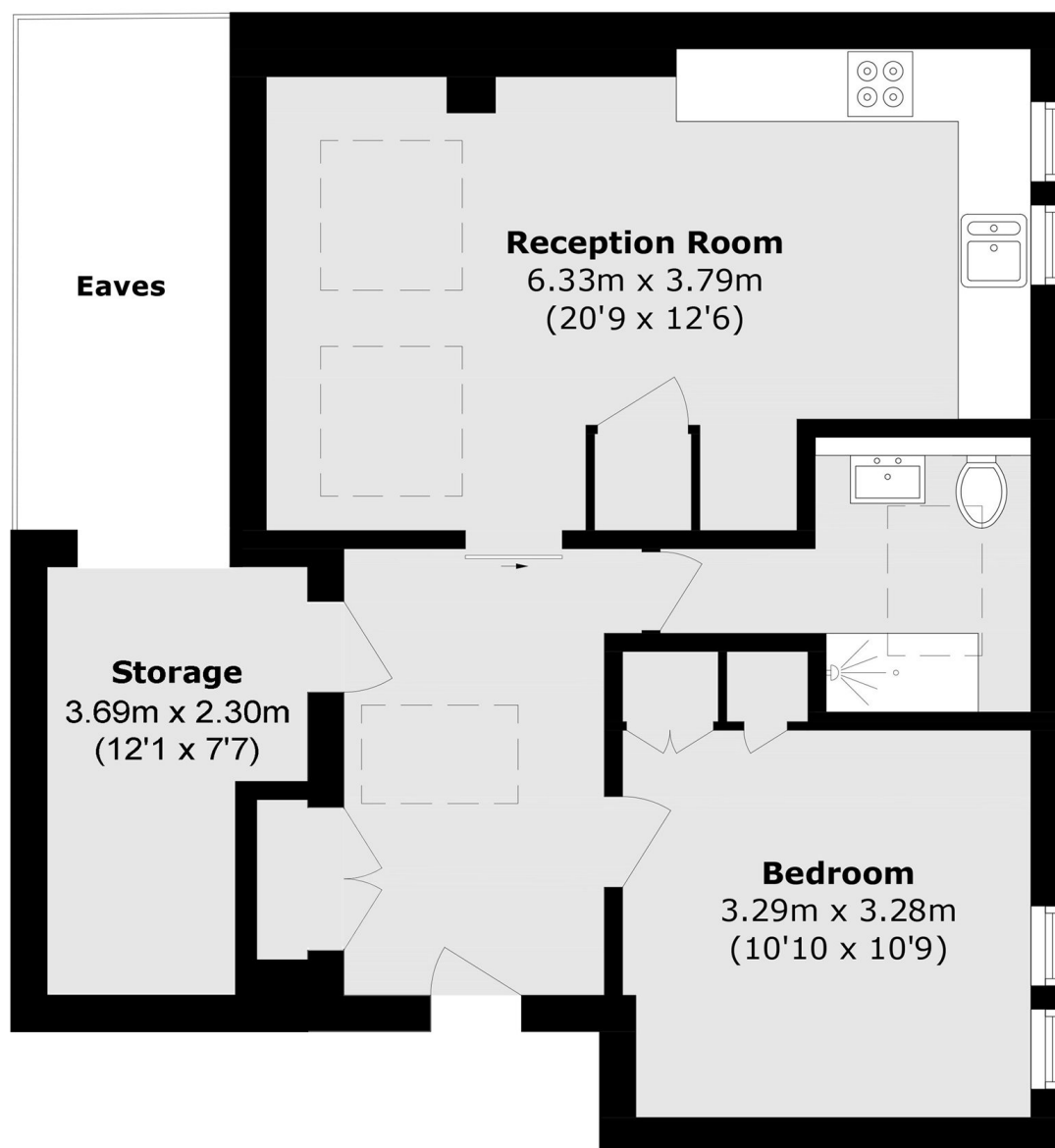
An idyllic one double bedroom apartment located on the top floor of this charming Mansion Block just moments away from Parsons Green. This spacious flat offers well-designed lateral living space, an abundance of storage and a communal garden.

Avondale Mansions is ideally situated just moments from the shops, cafés, and restaurants of Fulham Road and Parsons Green. The green open spaces of Bishops Park and Hurlingham Park are nearby.

### Features

- One Double Bedroom
- Communal Gardens
- Stylish Renovation
- Share Of Freehold
- Mansion Block
- Parsons Green

# Rostrevor Road, London, SW6



Total area (approx.): 59.5 sq. m (640.4 sq. ft)  
(Excluding Eaves)