



# Pilgrims View

Maidstone ME14 3DQ

Guide Price £620,000



COUNTRY HOMES

## Maidstone ME14 3DQ

KHP Country Homes are delighted to bring to the market this exceptionally well presented detached family home, offering the perfect blend of comfort, space and practicality, ideal for family living.

As you can see from the floor plan, downstairs comprises a contemporary open plan kitchen/diner overlooking the rear garden, creating a wonderful space for entertaining guests or enjoying quiet family evenings. The sitting room flows seamlessly from the kitchen/diner and further features include a separate utility room, cloakroom and gym.

Upstairs are four well-proportioned bedrooms and a family bathroom. The Master bedroom boasts an en-suite shower room, dressing room and study.

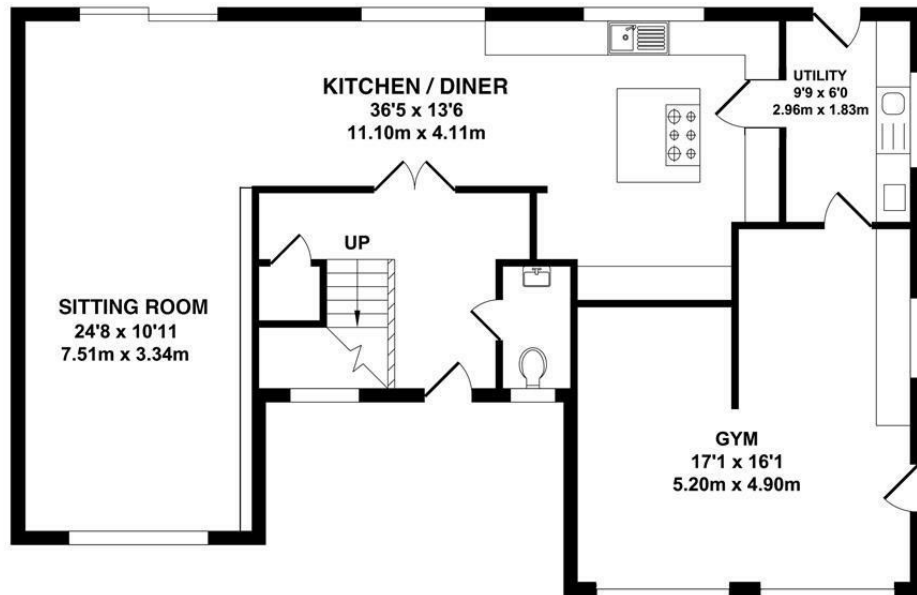
Externally, there is ample parking, with a large driveway. To the rear of the property, double doors lead out from the kitchen onto the landscaped gardens which offers both a patio and grassed areas. As you can see from the photos, there is also an outbuilding offering storage with a covered area housing a hot tub.

In summary, this detached house in Pilgrims View is a wonderful opportunity for those looking to settle in a contemporary family home in an accessible part of Maidstone. With its generous living spaces and charming surroundings, it is a property that should not be missed.

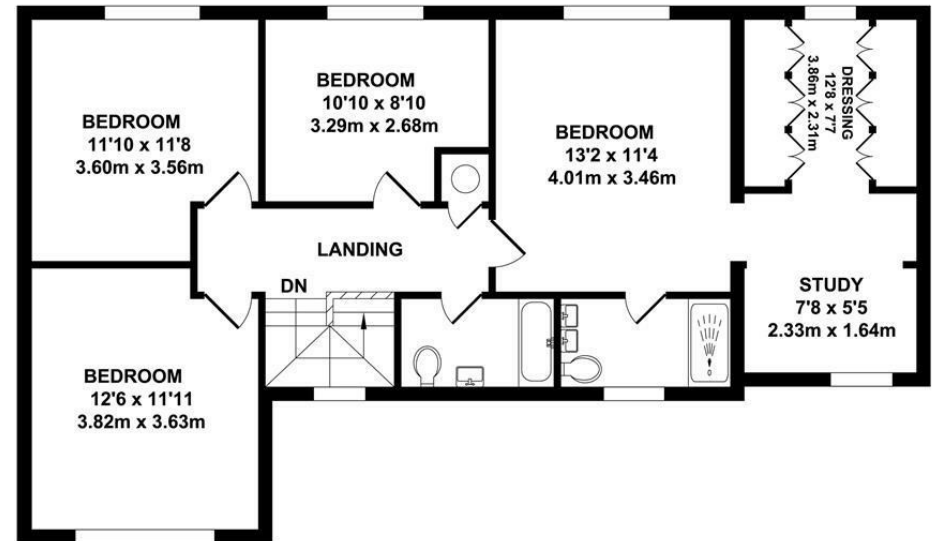
Call now to arrange your viewing.

- Detached 4 bed family home
- Generous size kitchen/diner
- Large sitting room
- Gym
- 4 double bedrooms
- Family bathroom & en-suite
- Dressing room & study
- Rear garden with large patio area
- Exceptional parking amenities
- Early viewing highly encouraged





GROUND FLOOR  
APPROX. FLOOR AREA  
985 SQ.FT.  
(91.47 SQ.M.)



FIRST FLOOR  
APPROX. FLOOR AREA  
828 SQ.FT.  
(76.93 SQ.M.)

**TOTAL APPROX. FLOOR AREA 1813 SQ.FT. (168.40 SQ.M.)**

Whilst every attempt has been made to ensure the accuracy of the floor plan contained here, measurements of doors, windows, rooms and any other items are approximate and no responsibility is taken for any error, omission or mis-statement. This plan is for illustrative purposes only and should be used as such by any prospective purchaser. The services, systems and appliances shown have not been tested and no guarantee as to their operability or efficiency can be given.

Zome Media ©2026

Energy Efficiency Rating		Current	Potential
Very energy efficient - lower running costs	A		
01-91	B		
92-99	C		
05-68	D		
09-54	E		
21-38	F		
81-20	G		
Not energy efficient - higher running costs			
England & Wales		79	82
EU Directive 2002/91/EC			





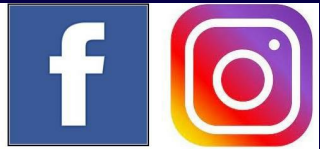
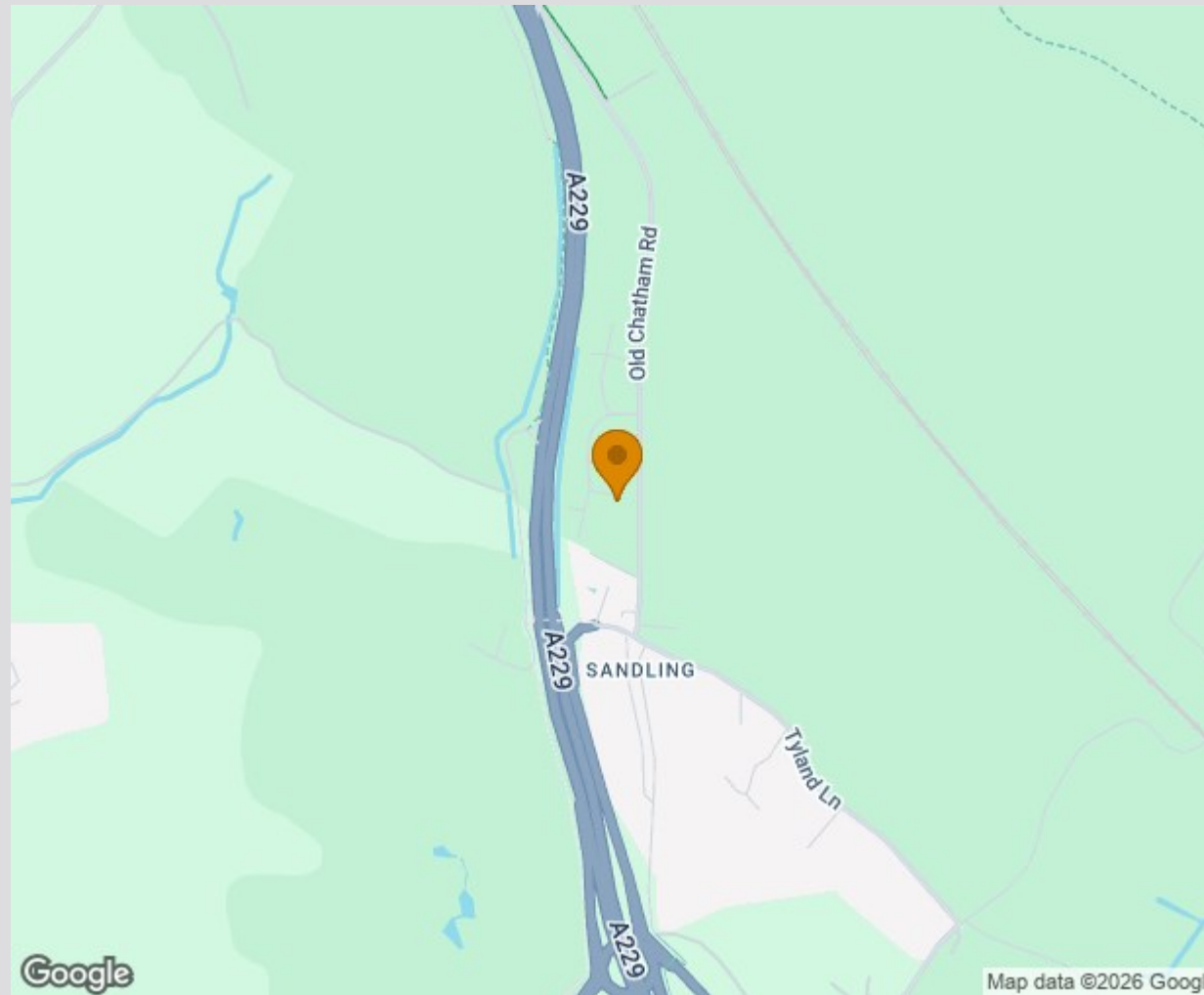
## Location Map

Tenure: Freehold

Council tax band: F

AML AL

By law, we are required to conduct anti-money laundering checks on all potential buyers and sellers, and we take this responsibility very seriously. In line with HMRC guidelines, our trusted partner, Coadjute, will securely manage these checks on our behalf. Once an offer is accepted (subject to contract), Coadjute will send a secure link for you to complete the biometric checks electronically. A non-refundable fee of £45 + VAT per person will apply for these checks, and Coadjute will handle the payment for this service. These anti-money laundering checks must be completed before the property can be removed from the open market and advertised as 'sold subject to contract' and before we can send the memorandum of sale to the solicitors to confirm the sale. Please contact the office if you have any questions in relation to this.



TO VIEW CONTACT: 01622 94 22 22 [allington@khp.me](mailto:allington@khp.me)

[www.khp.me](http://www.khp.me)



**Zoopla.co.uk**  
Smarter property search

