



Whitebeam Drive, Coxheath, Kent, ME17 4QY
Price £450,000



*****STUNNING FAMILY HOME***STYLISH AND EXTENDED THREE BEDROOM FAMILY HOME WITH FABULOUS OPEN PLAN KITCHEN/LIVING/DINING SPACE AND TWO BATHROOMS, LOCATED WITHIN WALKING DISTANCE OF LOCAL AMENITIES**

This beautifully presented and thoughtfully extended three-bedroom family home offers a superb blend of comfort and modern open-plan living, ideally situated in the ever-popular village of Coxheath. The accommodation on the ground floor comprises an entrance hall, a spacious front lounge which flows into an additional reception area, and a simply stunning open plan kitchen/dining/living space across the rear of the property with doors opening directly onto the patio – perfect for both everyday family life and entertaining. There is also a very useful ground floor bathroom, study area and a handy garage space, currently utilised as a home gym. Upstairs, the property offers three well-proportioned bedrooms and a beautifully renovated family bathroom.

Externally, the property benefits from a block paved driveway providing off-road parking to the front, whilst to the rear is a generous garden, predominantly laid to lawn with a spacious patio seating area. Coxheath village offers a range of local shops and amenities, a popular primary school and regular bus services into Maidstone Town Centre. For the commuter, Marden Train Station is a short journey providing frequent main line service to London. Viewing is highly recommended by the selling agent. Please contact Page & Wells on 01622 746273 to arrange your appointment.



GROUND FLOOR

Entrance Hall

Lounge 13'11" x 10'12" (4.24m x 3.35m)

Kitchen/Dining/Study Area 23'9" x 18'5" (7.25m x 5.61m)

Bathroom

FIRST FLOOR

Bedroom 1 12'1" x 9'6" (3.69m x 2.90m)

Bedroom 2 9'6" x 8'9" (2.91m x 2.67m)

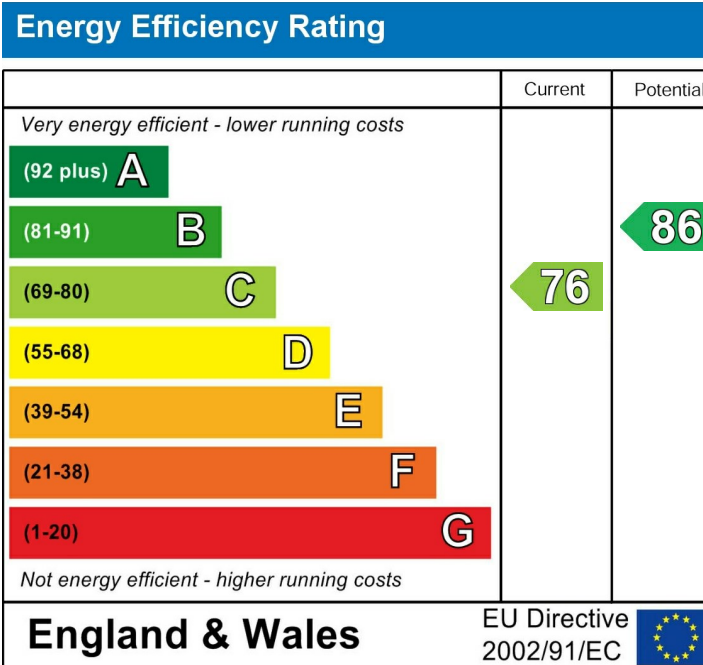
Bedroom 3 8'8" x 7'6" (2.65m x 2.31m)

Family Bathroom

EXTERNALLY

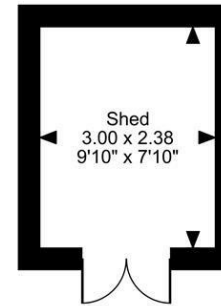
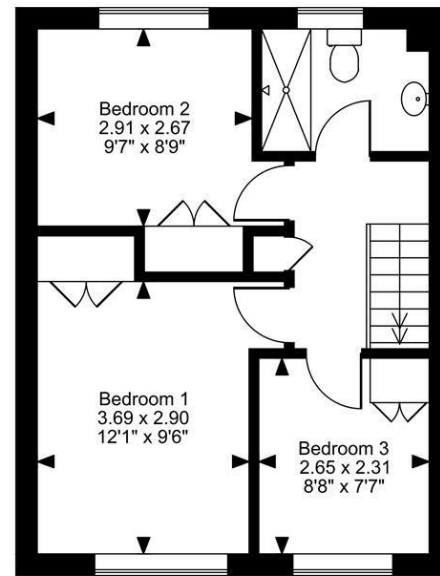
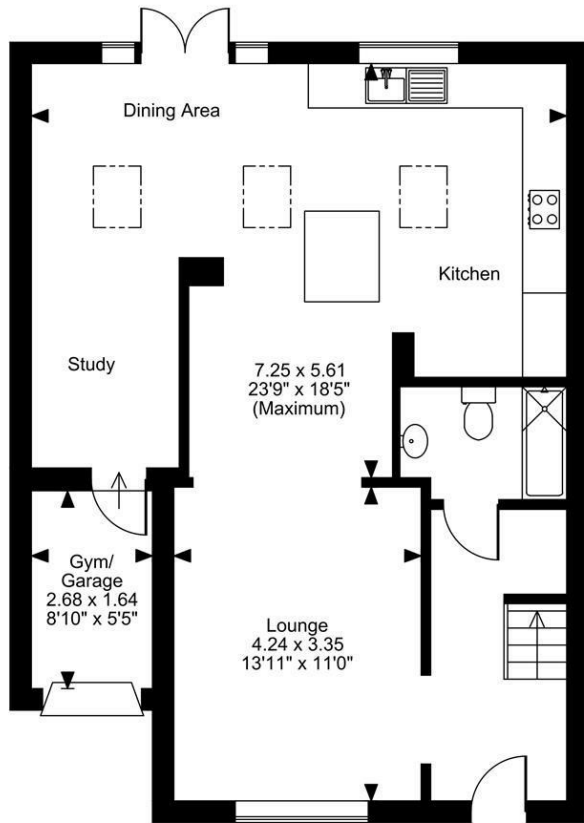
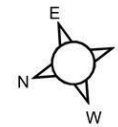
Gym/Garage 8'9" x 5'4" (2.68m x 1.64m)

Shed 9'10" x 7'9" (3.00m x 2.38m)



Page & Wells limited for themselves and for the vendors of this property whose agents they are give notice that: 1. These particulars do not constitute any part of, an offer or a contract. 2. All statements contained in these particulars as to this property are made without responsibility on the part of Page & Wells Limited or the Vendor. 3. None of the statements contained in these particulars as to the property is to be relied on as statements or representations of fact. 4. Any intending purchaser must satisfy himself by inspection or otherwise as to the correctness of each of the statements contained in these particulars. 5. The vendor does not make or give, and neither Page & Wells Limited nor any person in their employment has any authority to make or give any representation whatsoever in relation to this property. These particulars are supplied on the understanding that all negotiations are carried out throughout Page & Wells Limited. Properties with a reference prefixes EAA are those which Page & Wells Limited disclose an interest in accordance with the provisions of the Estates Agents Act 1979

Whitebeam Drive, Coxheath, Maidstone
 Approximate Gross Internal Area
 Main House = 1092 Sq Ft/101 Sq M
 Garage/Gym = 47 Sq Ft/4 Sq M
 Shed = 77 Sq Ft/7 Sq M
 Total = 1216 Sq Ft/112 Sq M



FOR ILLUSTRATIVE PURPOSES ONLY - NOT TO SCALE
 The position & size of doors, windows, appliances and other features are approximate only.
 © ehouse. Unauthorised reproduction prohibited. Drawing ref. dig/8678980/LCO

