



Charlotte Street, W1T

£623 Per week

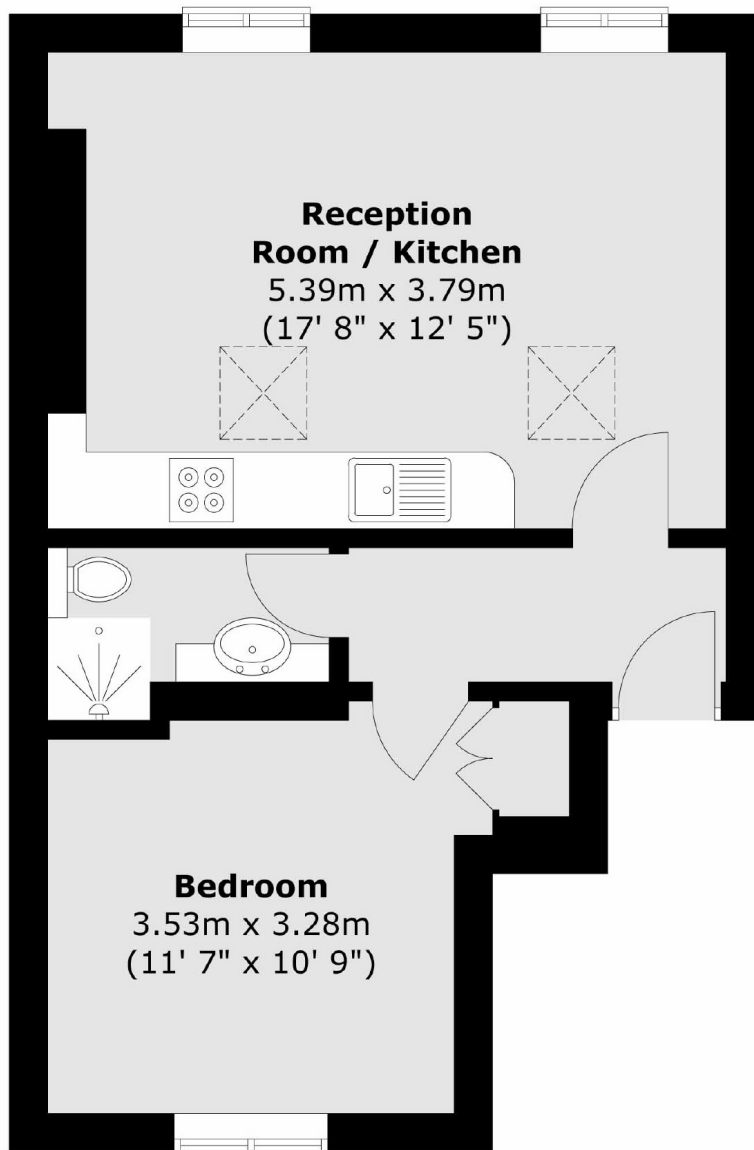
Exceptionally bright one bedroom apartment, located in the heart of Fitzrovia. The property has an open plan kitchen/reception area with wooden floors throughout the flat.

Local Stations are Goad Street and Tottenham Court Road with Central, Northern and the future Elizabeth Line which will provide fast links to The City and London Heathrow Airport.

Features

- Central Location
- Wooden Floors
- One Bedroom
- Unfurnished
- Open Plan
- Modern

Charlotte Street, London, W1T



Total area (approx.) : 39.3 sq. m (423 sq. ft)