

**LONDON
VICTORIA
GROUPS** 



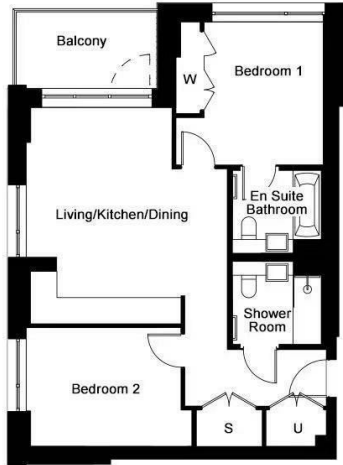
281 Kennington Lane

, London SE11 5AQ

- Vauxhall Station
 - Gym
- Beautifully landscaped communal spaces
 - CTB-F
- 24-Hour Concierge
- Comfort Cooling
 - EPC-B

£3,600 PCM

Local Authority **Lambeth**
 Council Tax Band **F**
 EPC Rating **B**



Oval Village, Phoenix Court - Property

Dimensions

Living/Kitchen/Dining	11' 1" x 17' 11"	3.38m x 5.48m
Bedroom 1	9' 9" x 11' 8"	2.96m x 3.56m
Bedroom 2	13' 2" x 9' 8"	4.01m x 2.95m
Total Area	758 sq.ft	70 sq.m

Key

- S Storage
- U Utility
- W Wardrobe



London Office Office
 Spaces Victoria, 25 Wilton Road, Pimlico,
 London, SW1V 1LW

Contact
 020 3084 3094
 XL@londonvictoriagroups.co.uk
 www.londonvictoriagroups.co.uk

Agents Note: Whilst every care has been taken to prepare these particulars, they are for guidance purposes only. All measurements are approximate and for general guidance purposes only and whilst every care has been taken to ensure accuracy, they should not be relied upon and potential buyers/tenants are advised to recheck the measurements.