



Cutter Lane, Greenwich, London SE10 0YN



Cutter Lane, Greenwich SE10

Leasehold (228 years remaining)

A striking riverside apartment on Greenwich Peninsula offering spectacular Thames and Canary Wharf views from a private balcony. This also features a residents' gym, 24-hour concierge, and exceptional Jubilee line connectivity for the modern London lifestyle.

Key Features

- 2 Double bedrooms, 2 Bathrooms
- Stunning river views
- Excellent transport links
- Council Tax: **E**
- Service Charge: **£7,393.44**
- Ground Rent: **£324**
- Light and spacious
- EPC: **B**

Inside, the 840 square foot interior is bathed in natural light, enhanced by floor-to-ceiling windows that draw the eye towards the ever-changing river tableau. The private balcony extends the living space outdoors, providing an elevated vantage point to appreciate the dynamic waterfront setting. Two well-proportioned bedrooms offer comfortable retreats, complemented by two contemporary bathrooms that serve the home with style and practicality.

The residents' gym enables an active lifestyle without leaving the building, while the 24-hour concierge service adds a layer of security and convenience to everyday living.

North Greenwich Station places the Jubilee line mere moments away, delivering swift connections to Canary Wharf, the West End, and the City. River bus services add an alternative commuting option along the Thames, while the Thames Clipper offers a scenic route into central London. The Peninsula's road links provide straightforward access to the Blackwall Tunnel and beyond for those travelling by car.









Cutter Lane, SE10

Approximate Gross Internal Area = 78 sq m / 840 sq ft

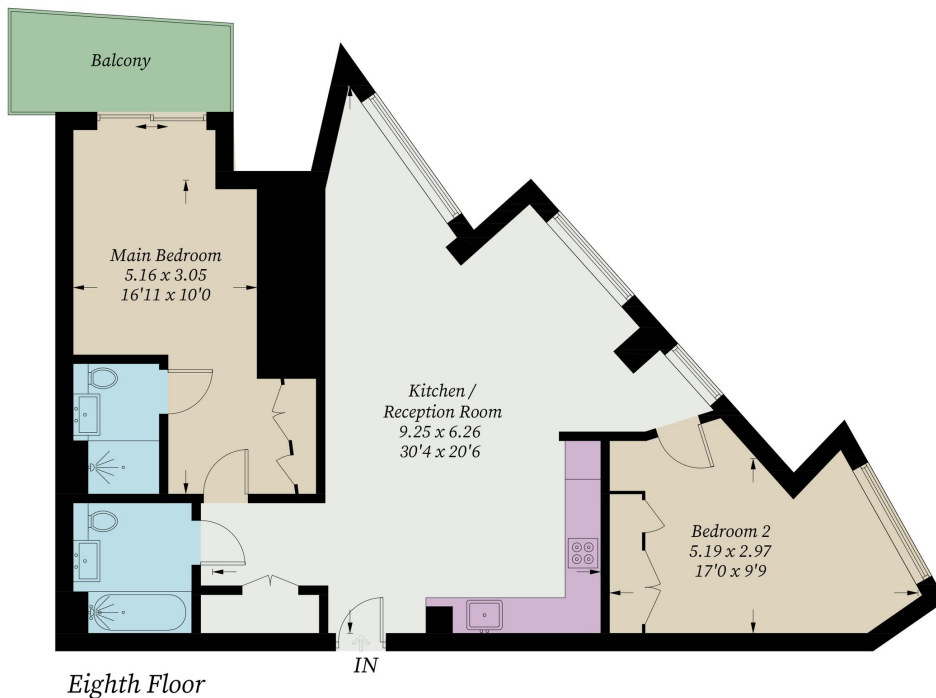


Illustration for identification purposes only, measurements are approximate, not to scale. Fourlabs.co © (ID1308909)

22 College Approach, Greenwich,
London, SE10 9HY
Tel: 020 7399 5595

Sales, Lettings & Property Management

residential.jll.co.uk

