



17 Cotman Close, Abingdon OX14 5NH



17 Cotman Close

Spacious and well presented three-bedroom terrace house situated in an established location close to many amenities including good schooling within easy reach of Abingdon town centre.

Cotman Close is an established location offering easy pedestrian access to many nearby amenities including good schooling. There is a quick route to the A34 leading to many important destinations north and south including Didcot mainline railway station, ideal for commuters to London Paddington. Useful distances include Abingdon town centre (circa. 0.7 miles) and Oxford city centre (circa. 7 miles).

Bedrooms: 3

Bathrooms: 1

Reception Rooms: 2

Council Tax band: C

Tenure: Freehold

EPC Energy Efficiency Rating: C





Key Features

- Entrance hall leading to front facing living room
- Well equipped open plan kitchen and dining room with a good selection of floor and wall units leading through to separate utility room and ground floor cloak room
- Three spacious first floor bedrooms complimented by well equipped family bathroom with separate WC
- Well equipped family bathroom complemented by separate WC
- Fully enclosed rear gardens with patio and decked area with detached garage
- Please be advised this property is of non-traditional construction known as Wimpey No-Fines. Prospective buyers requiring a mortgage are advised to check with their lender regarding their criteria



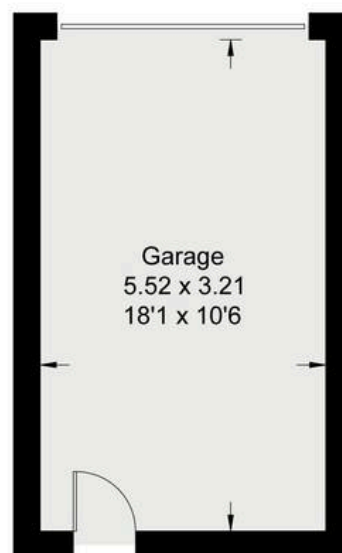


Cotman Close, OX14

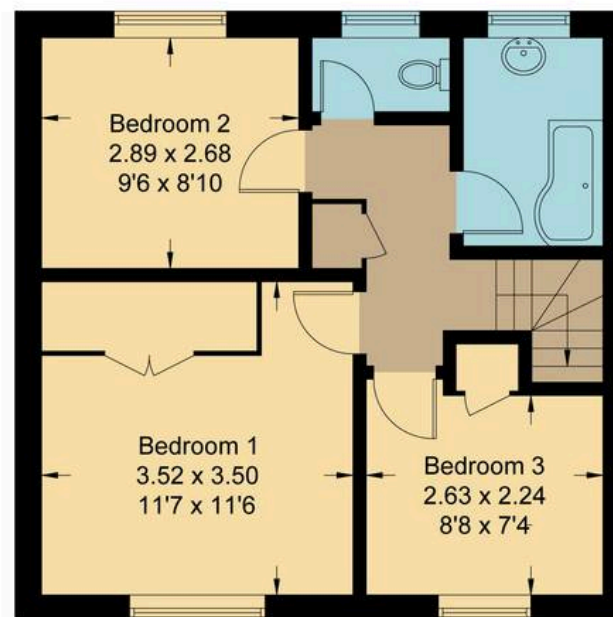
Approximate Gross Internal Area = 86.60 sq m / 932 sq ft
Garage = 17.70 sq m / 191 sq ft
Total = 104.30 sq m / 1123 sq ft
For identification only - Not to scale



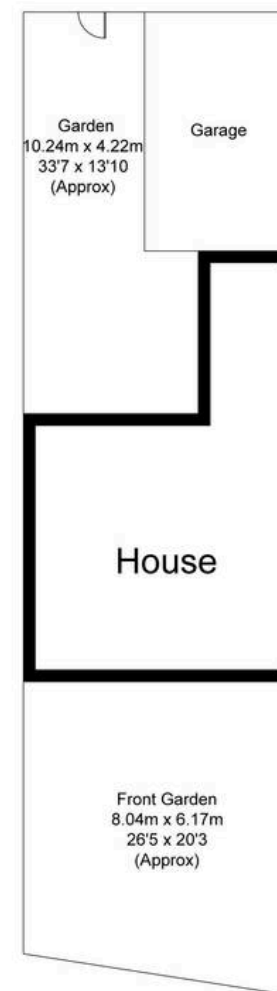
Ground Floor



(Not Shown In Actual Location / Orientation)



First Floor



Not to scale, for illustration and layout purposes only.
© Mortimer Photography. Produced for Hodsons.
Unauthorised reproduction prohibited

Hodsons
...your move, our passion
Sales | Lettings

5 Ock Street, Abingdon,
Oxfordshire, OX14 5AL
T: 01235 553686
E: abingdon@hodsons.co.uk
www.hodsons.co.uk