



Banister Road, W10

£2,250 Per calendar month

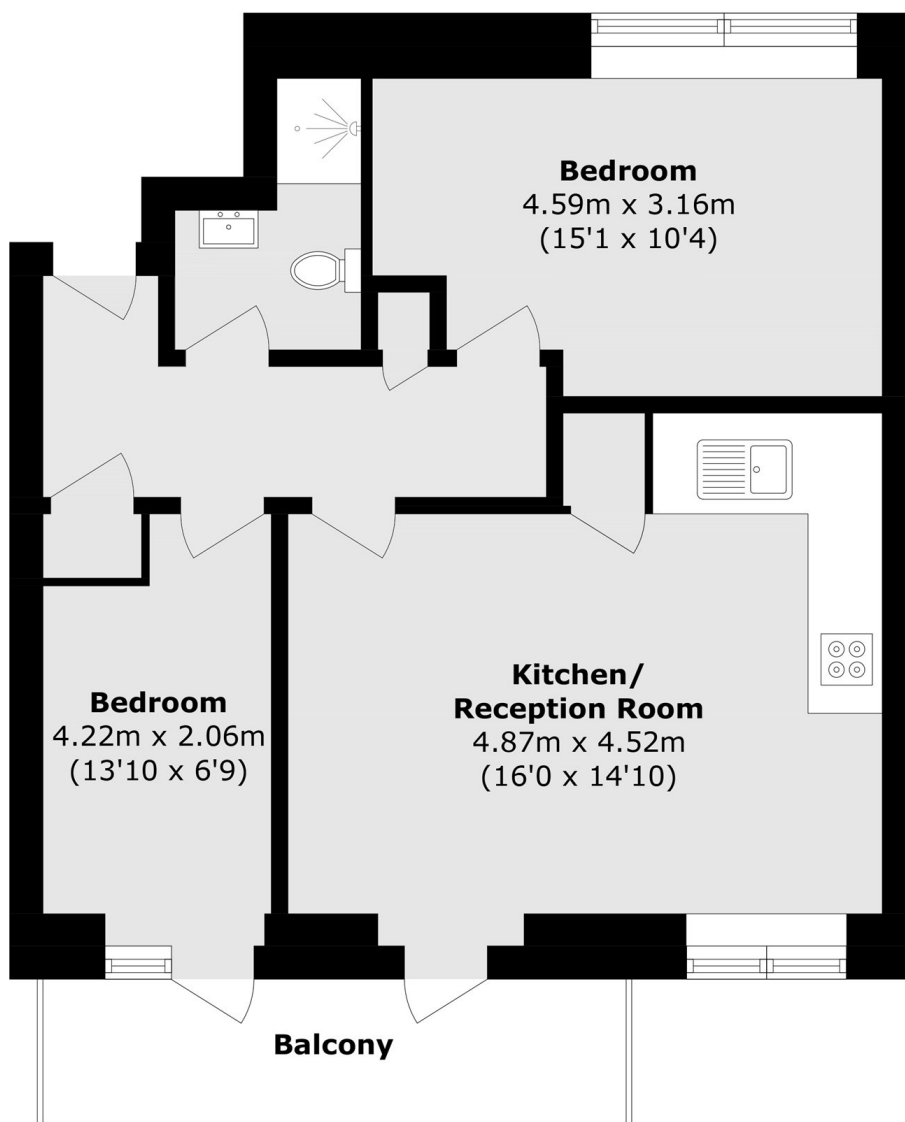
Be the first to move in to this two bedroom apartment in a brand new development in a superb location. The property is finished to a great specification and has a private balcony. There is also a lift and access to a communal roof terrace.

This development is ideally located close to the shops, cafes, restaurants and bars in Kensal Rise and Queen's Park. Transport links include Kensal Rise, Kensal Green and Queen's Park.

Features

- Brand New
- Modern
- Lift Access
- Two Bedrooms
- Balcony
- Fitted Kitchen

Banister Road, London, W10



Total area (approx.): 57.6 sq. m (620.0 sq. ft)
Balcony Total (approx.): 6.9 sq. m (74.3 sq. ft)