



Webbs
Helping people move since 1994

Horseshoe Drive | Cannock | WS12 0FR

Offers Over £200,000



Summary

MODERN TERRACED HOME | THREE BEDROOMS | SPACIOUS LOUNGE DINER | OPEN VIEWS TO FRONT | ENCLOSED REAR GARDEN | REAR PARKING | EXCELLENT SCHOOLS & TRANSPORT LINKS | CLOSE TO LOCAL AMENITIES

Webbs Estate Agents are delighted to present this well-maintained modern terraced home, ideally suited to first-time buyers, those looking to downsize, or investors alike. The property benefits from excellent transport links and highly regarded school catchments, while also being conveniently located close to local shops and amenities. Scenic walks at Cannock Chase and Hednesford Hills are just a short distance away.

The accommodation briefly comprises an entrance hallway, a guest WC, a fitted kitchen, and a spacious lounge diner featuring patio doors opening onto an enclosed rear garden —perfect for relaxing or entertaining.

To the first floor, the property offers three well-proportioned bedrooms and a family bathroom.

Externally, there is the added benefit of allocated rear parking.

Early viewing is highly recommended to fully appreciate the accommodation on offer.

Key Features

- MODERN TERRACED HOME
- ALLOCATED PARKING AT THE REAR
- ENCLOSED REAR GARDEN
- GUEST WC
- EXCELLENT TRANSPORT LINKS
- THREE GENEROUS BEDROOMS
- EXCELLENT SCHOOL CATCHMENTS
- SPACIOUS LOUNGE DINER
- SOUGHT AFTER LOCATION
- EARLY VIEWING ADVISED

Rooms and Dimensions

ENTRANCE HALLWAY

KITCHEN

8'9" x 5'11" (2.69 x 1.82)

LOUNGE DINER

11'4" x 12'7" (3.47 x 3.84)

GUEST WC

BEDROOM ONE

14'5" x 7'6" (4.40 x 2.31)

BEDROOM TWO

11'9" x 9'0" (3.60 x 2.76)

BEDROOM THREE

11'9" x 6'9" (3.59 x 2.07)

FAMILY BATHROOM

7'11" x 5'3" (2.42 x 1.62)

ENCLOSED REAR GARDEN

ALLOCATED PARKING TO THE REAR

IDENTIFICATION CHECKS - C





Webbs
Helping people move since 1994



Webbs
Helping people move since 1994



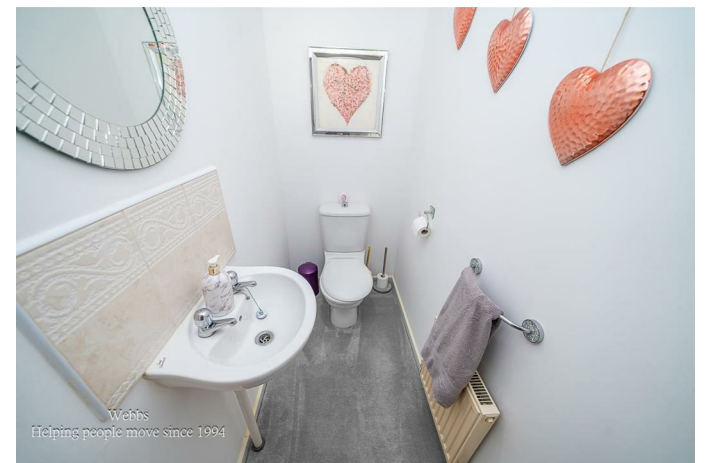
Webbs
Helping people move since 1994



Webbs
Helping people move since 1994



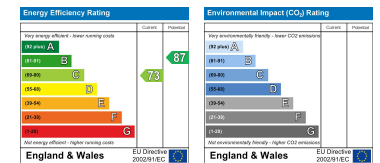
Webbs
Helping people move since 1994



Webbs
Helping people move since 1994



Webbs Estate Agents - endeavour to maintain accurate depictions of properties in Virtual Tours, Floor Plans and descriptions, however, these are intended only as a guide and purchasers must satisfy themselves by personal inspection.



153 Avon Road, Cannock, WS11 1LF

Tel: 01543 468846 | Email: sales@webbsestateagents.co.uk | www.webbestateagents.co.uk

