



Chester Road, N19

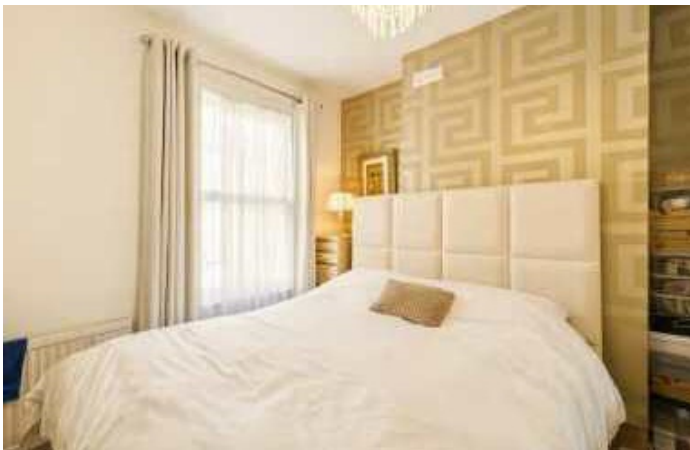
£850,000

A well-proportioned three double bedroom split-level flat situated in a Victorian terrace. This property offers a large reception and dining area, and a separate kitchen that has stairs leading down to a private garden.

Located in the Dartmouth Park Conservation Area and ideally placed within easy reach of Hampstead Heath, the local shops and cafés on Swain's Lane and equidistant from Tufnell Park and Archway stations.

Features

- Three Bedrooms
- Separate Kitchen
- Private Garden
- Split-Level
- Superb Transport Links
- Period Property



Chester Road, N19

On the first floor is a sizeable reception room with wood flooring and large windows which allow lots of natural light into the property.

Also on this floor is a double bedroom and a separate kitchen which leads to a terrace with stairs down to a private garden. On the second floor are two further double bedrooms and a family bathroom.



Chester Road, London, N19

