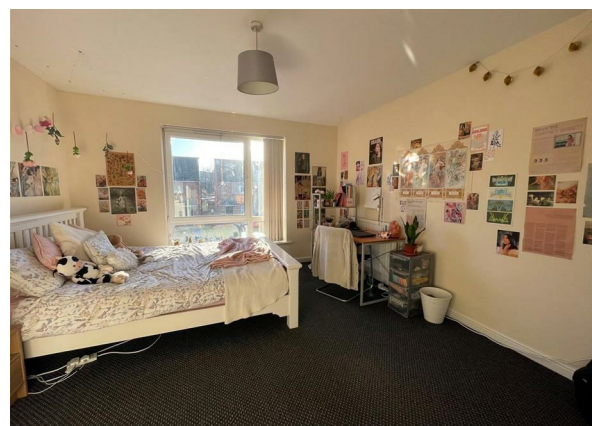
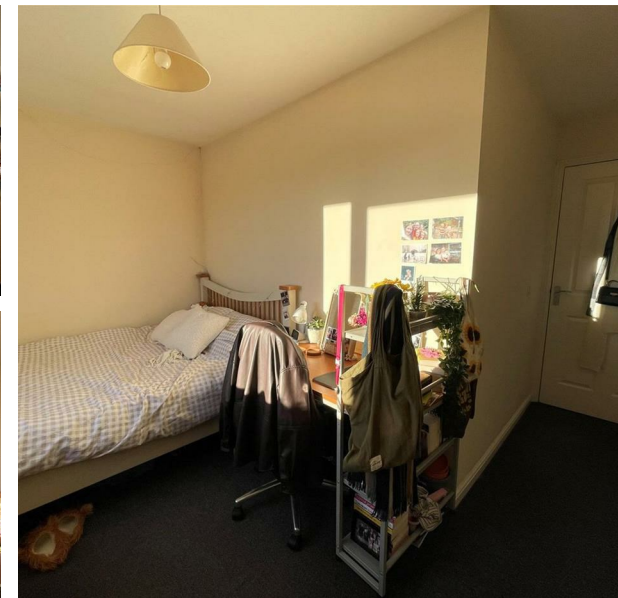


16 Lauderdale Crescent, Grove Village, Manchester, M13 9FD
£2,300 Per Month
Council Tax Band: New Build



STUDENT PROPERTY. A three story town house with four double bedrooms offered fully furnished benefitting from a private garden and three bathrooms.

The property consists of a spacious kitchen with dining room table and chairs which leads out into the private garden. There are four double bedrooms all with free standing furniture including a couple bed, chest of draws and wardrobe. One of the rooms located on the top floor of the building has its own private en suite along with a down stairs toilet and master bathroom.

Located in Grove village the property is a short walk away from both MMU and Manchester metropolitan university. There are several bus stop a 5 minute walk away on Plymouth Grove which will take you in and around the city center.



ORLANDO REID

St Johns Court 19b Quay Street, Manchester, M3 3HN

01616760099

manchester@orlandoreid.co.uk

<https://www.orlandoreid.co.uk/manchester/>

