



Blenheim Terrace, NW8

£2,500 Per week

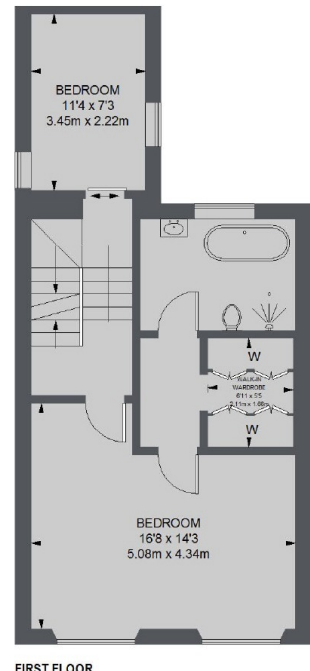
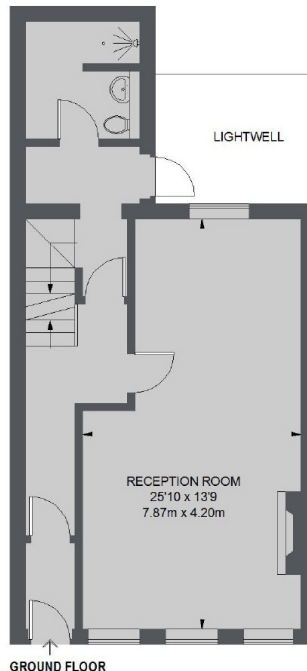
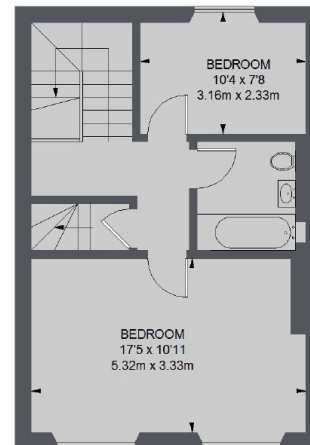
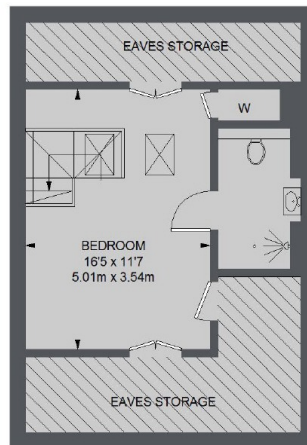
Located on this quiet residential tree lined cul-de-sac, is this newly decorated four double bedroom house with private front garden and courtyard terrace.

Blenheim Terrace is located off Abbey Road, close to local shops, cafés and restaurants of Blenheim Terrace, Boundary Road and Abbey Road.

Features

- Newly Decorated
- Four Bedroom House
- Arranged Over Five Floors
- Spacious Reception Room
- Three Bathrooms
- Kitchen With Dining Area

Blenheim Terrace, London, NW8



TOTAL APPROX. FLOOR AREA (EXCLUDING EAVES STORAGE)
2503 SQ. FT. (232.58 SQ. M.)