



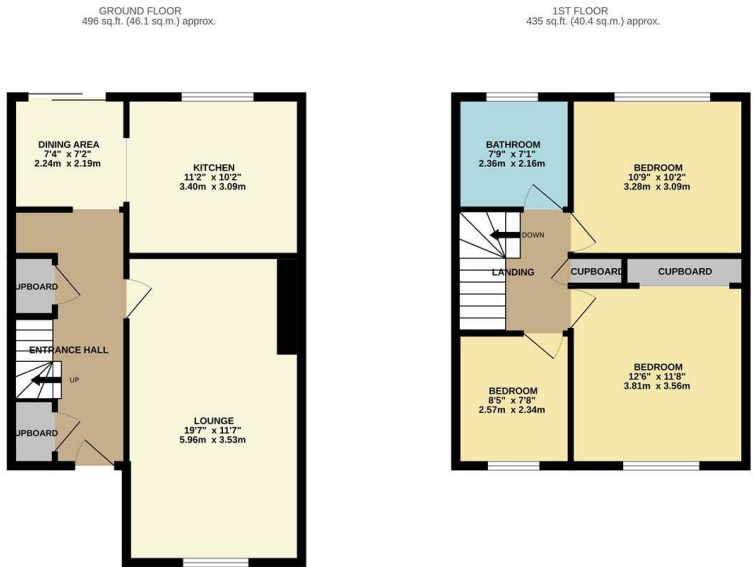
Altham Grove, Harlow, CM20 2PH  
£375,000



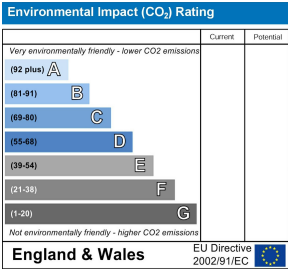
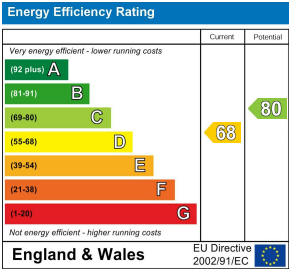
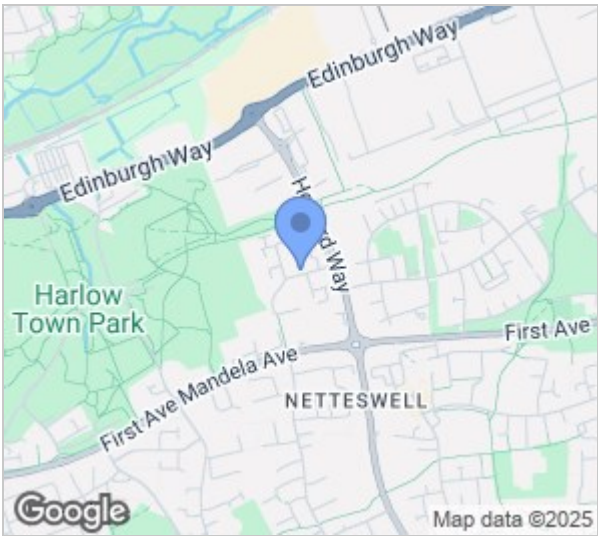


# Altham Grove, Harlow, CM20 2PH

Located in the popular turning of Altham Grove is this three bedroom end of terrace house with potential for off street parking (subject to planning permission). The property comprises an entrance hall leading to a lounge, kitchen with a modern range of fitted wall & base level units with work-surface areas, dining area, landing, three bedrooms and a family bathroom with a white three piece-suite. Outside the rear garden is mostly laid to lawn with a patio area and side access. Altham Grove is a popular area located close to local primary and secondary schools and is just a short walk to Harlow Town Park and Harlow Town train station offering direct links to London Liverpool Steet Station.



REYLANDJOHNSONJAG  
TOTAL FLOOR AREA : 932 sq.ft. (86.6 sq.m.) approx.  
Whilst every attempt has been made to ensure the accuracy of the floorplans contained here, measurements of doors, windows, rooms and any other items are approximate and no responsibility is taken for any error, omission or mis-statement. This plan is for illustrative purposes only and should be used as such by any prospective purchaser. The services, systems and appliances shown have not been tested and no guarantee as to their operability or efficiency can be given.  
Made with Metropac (2025)



These particulars, whilst believed to be accurate are set out as a general outline only for guidance and do not constitute any part of an offer or contract. Intending purchasers should not rely on them as statements of representation of fact, but must satisfy themselves by inspection or otherwise as to their accuracy. No person in this firms employment has the authority to make or give any representation or warranty in respect of the property.