



**High Street, Harrington**  
Northampton

**£1,450 pcm**

**Deposit:** £1,673

**Date First Available:** 20/03/2026

**Furnishing:** Unfurnished

"The Countryside Awaits!"

With far reaching countryside views to the rear elevation and set in the picturesque village of Harrington, this charming three bedroom property offers the perfect rural setting with an immaculate interior finished to an exceptionally high standard.

Highly sought after village location set in the heart of Harrington within walking distance of the neighbouring countryside and the village pub. Market Harborough is also just a short drive away with access to the train station with regular trains running into London St. Pancras in under an hour.

Entrance is gained through the composite front door into the inviting entrance hall featuring solid oak flooring, a contemporary full height radiator, access to a useful cloakroom cupboard and stairs rise to the first floor.

Beautifully appointed living room in excellent decorative order, spanning the depth of the property with continued solid oak flooring, feature bow window injecting an abundance of natural light to the front elevation and a generous window overlooking the garden to the rear.

Stunning kitchen/breakfast room offering a dual aspect with breath-taking countryside views to the rear elevation and an attractive outlook of the property's front garden. There are a host of high quality fixtures and fittings to include LED spotlights, solid oak flooring and the benefit of ample space for a central table and chairs.

The stunning kitchen comprises a range of eye and base level units, a roll top work surface with upstand and a host of integrated appliances to include a 'Neff' self-cleaning oven, a five ring induction hob with a glass splash back and extractor hood, a Neff dishwasher, wine cooler and a fridge.

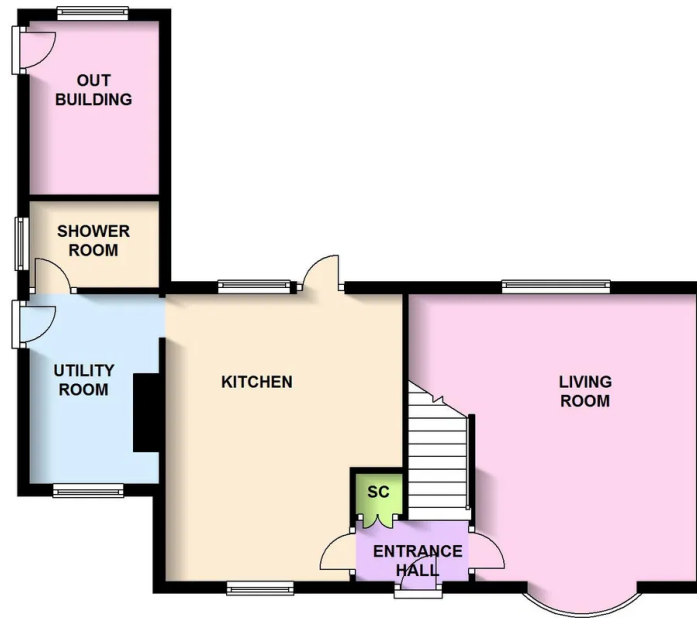
Separate utility room with continued oak flooring, additional storage, a stainless steel sink and space and plumbing for washing machine and an additional appliance. The utility area also benefits from side access to the garden and the ground floor shower room.

Fully converted outbuilding accessed from the side

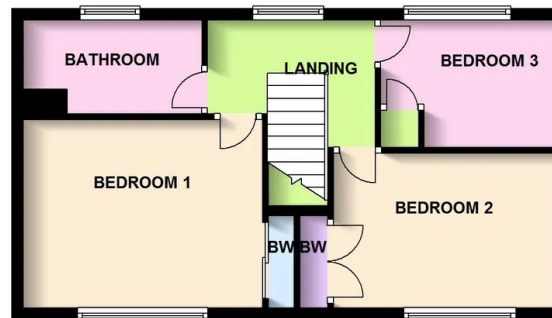




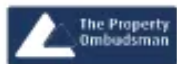
## GROUND FLOOR



## FIRST FLOOR



Henderson Connellan Market Harborough office 01858 410 400 | 63 High Street, Market Harborough, Leicestershire, LE16 7AF  
marketharboroughsales@hendersonconnellan.co.uk | marketharboroughlettings@hendersonconnellan.co.uk



Disclaimer: These particulars do not form part of any offer or contract and should not be relied upon as statements or representations of fact. Any areas, measurements of distances are approximate. The text, photographs and plans are for guidance only and are not necessarily comprehensive.

