



28 Lloyd Road, Hove

 FINE & COUNTRY

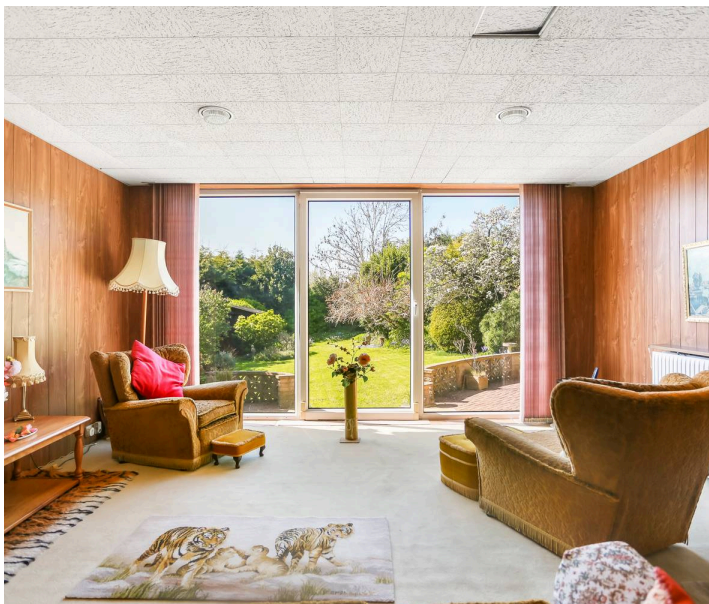


28 Lloyd Road

Hove

Firmly nestled in the sought after Hove Park area, Lloyd Road is a quiet residential street set between Shirley Road and Hove Park Road. A rare opportunity, this much-loved home has remained within the same family for over fifty years, with the current owners being only the second custodians of this handsome 1930s mock Tudor property. Now, as it approaches its centenary, it is ready to begin its next chapter and offers exciting scope for modernisation and enhancement.

The ground floor is currently arranged with a generous kitchen diner, two reception rooms, a conservatory and a useful lean-to providing storage or workshop space. There is also a versatile study which could serve as a ground floor bedroom, along with a shower room. Garages sit to either side of the property, offering excellent storage or potential for further development. Subject to the necessary consents, there is clear opportunity to reconfigure, extend or open up the space to create a truly bespoke family home.





The kitchen, finished in a cheerful yellow, offers ample room for dining and benefits from a larder store and side access from the garage through to lean-to. The living room, with its characterful wood panelling, enjoys direct access out to the south westerly facing garden, creating a lovely connection between inside and out.

Upstairs, there are three bedrooms, along with a family bathroom and separate WC, both retaining charming period pastel fittings. The property offers further potential to extend into the loft, the property could potentially be expanded with an additional storey above the kitchen & living room all subject to necessary consents. From the upper floor, there are far reaching views stretching down towards the coast.

Outside, the substantial south westerly garden is a true highlight. Lovingly maintained over the years, it features mature planting, established borders and trees that provide year-round interest and privacy. A large walled patio sits directly off the living space and conservatory, offering an ideal setting for alfresco dining and entertaining. To the rear, a generous shed provides practical storage for garden equipment.





To the front, a privet hedge and a mix of evergreen and perennial planting create a welcoming approach. Driveways on either side of the house lead to the two garages, offering excellent parking, storage or further potential for adaptation.

Sitting near to the green open spaces of Hove Park there is an abundance of outdoor facilities close at hand ranging from tennis courts, children's playground and bowling green to a café, picnic area and working model railway.

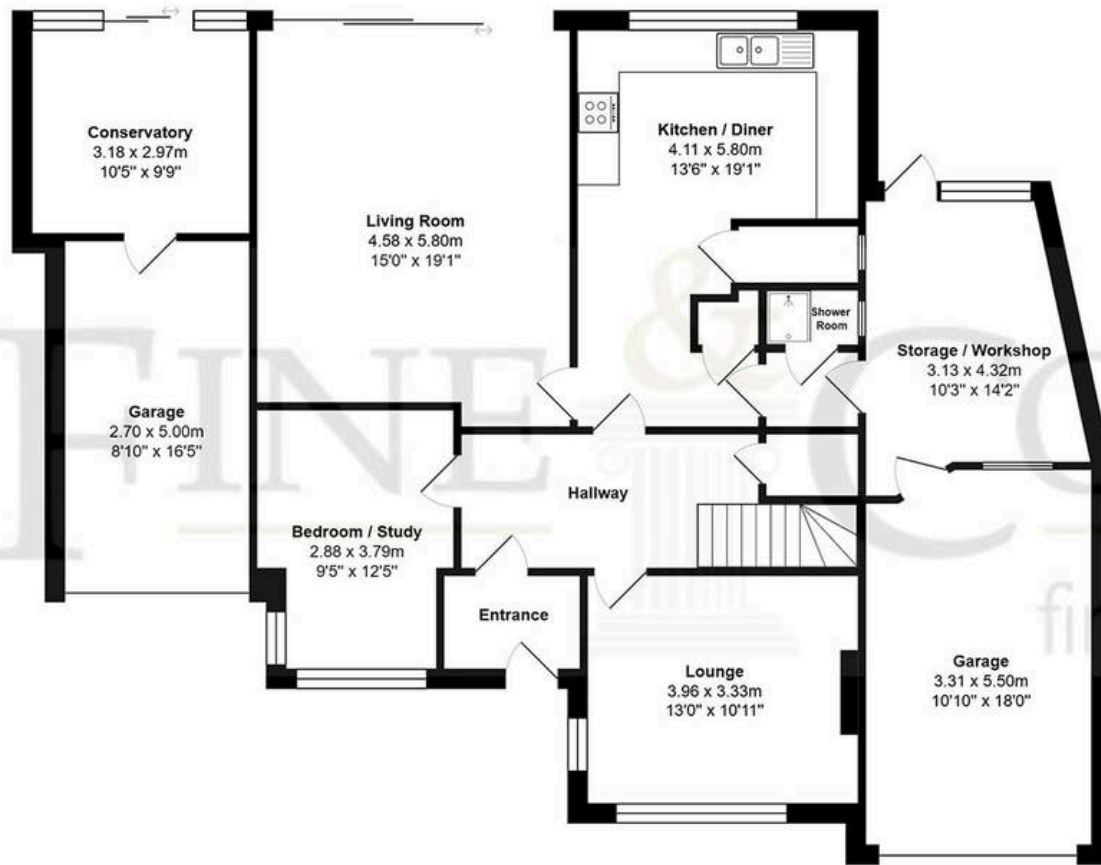
A Waitrose superstore and Tesco Metro are within walking distance as well as the shops and amenities of Seven Dials, Church Road and Goldstone Villas all being easily accessible. Hove's famous seafront is just past Church Road and is the perfect place to spend those summer afternoons.

Preston Park and Hove Station offer convenient mainline links for commuters and local schools include Lancing College Preparatory, Cottesmore St Marys Catholic Primary School and Hove Park School, BHASVIC Sixth Form Centre, along with the Bilingual Primary School.

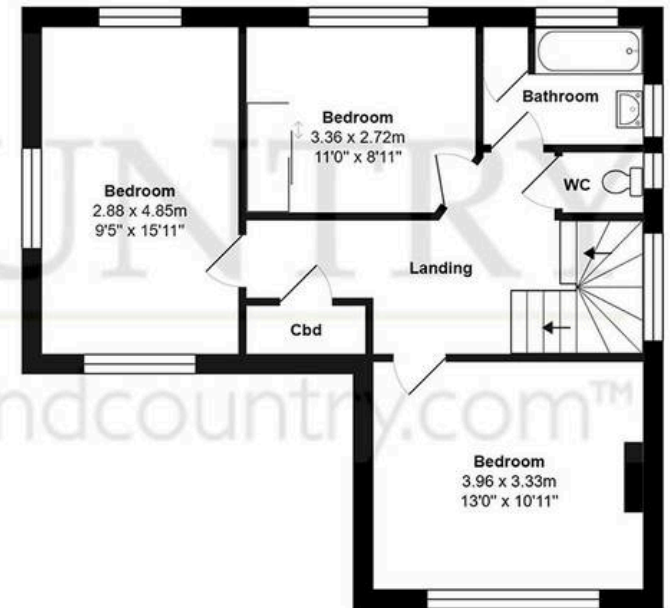








Ground Floor



First Floor

Total Area: 200.4 m² ... 2158 ft²

All measurements are approximate and for display purposes only.



Fine & Country- Brighton & Hove

46 Church Road, Hove - BN3 2FN

01273 739911

brightonandhove@fineandcountry.com

www.fineandcountry.co.uk/brighton-and-hove-estate-agents

 **FINE & COUNTRY**

We wish to inform prospective purchasers that we have prepared these sales particulars as a general guide. We have not carried out a detailed survey, nor tested the services, appliances and specific fittings. Rooms sizes are approximate.