



SIMPLE LIFE



SIMPLE LIFE



## Ambergate Road, Wolverhampton, WV14

£1,225 PCM

Stonefield Edge is a brand new village just 2.5 south east of Wolverhampton City Centre, featuring 123 stunning homes to rent.

The Ellesmere is a stunning home built with your needs in mind. Downstairs, there is a generous living room, hallway and WC. The rear of the property has a magnificent living/kitchen area with a range of contemporary fitted units with integrated appliances. The room has French windows opening onto and overlooking the rear garden as well as a series of skylights which flood the room with light – an ideal space for both family time and entertaining.

Upstairs there is a spacious family bathroom complete with a bath and shower, a master bedroom with fitted, mirrored wardrobes and two further well-proportioned bedrooms. At the top of the stairs you will also find a handy store cupboard.

The market town of Bilston benefits from a range of shops including a Morrisons, Lidl and Argos, as well as the Springvale Way Retail Park. The pedestrianised area gives you convenient access to high street shops and the 150 market stalls set up 4 times a week.

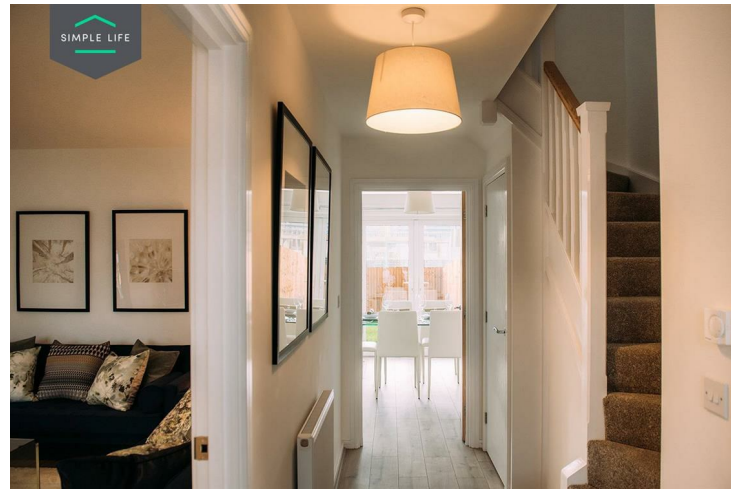
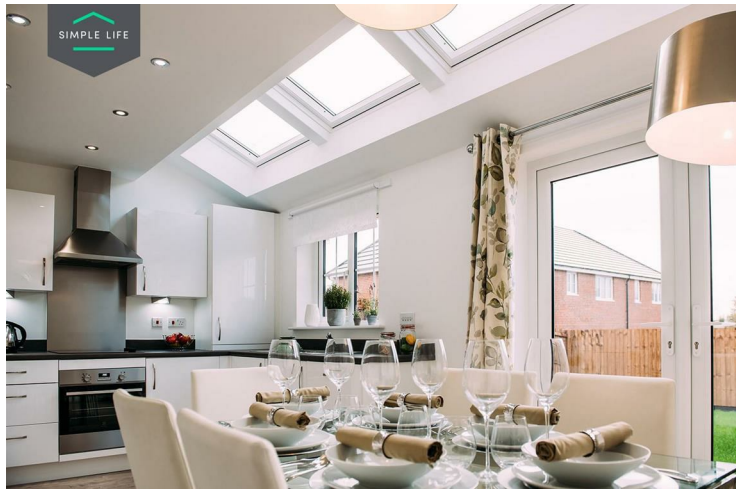
For families with children, your education needs are well met with Stonefield Edge being within the admission area of 58 Good and Outstanding rated primary schools including Bilston C of E Primary School.

If you ever need to travel further afield, Wolverhampton train station is 2.5 miles from the development, whilst by car you can access the M6 within 3 miles providing easy access to the North West as well as further south to Birmingham.

Deposit: £1410  
Holding deposit: £280  
Unfurnished  
Council tax: B  
Available 19th March 2026







## Key Features

- Car Parking Space
- Dishwasher
- Washing machine
- Carpets up the stairs and in the bedrooms
- Private back garden
- Security Alarm
- Fridge-freezer
- Modern kitchen worktops and units
- Wood-effect flooring downstairs

## Location

