



Chartwell House Waterfront Drive, Chelsea, SW10

Offers In Excess Of £2,000,000, Leasehold

NAPIER WATT

T: 0207 935 0011

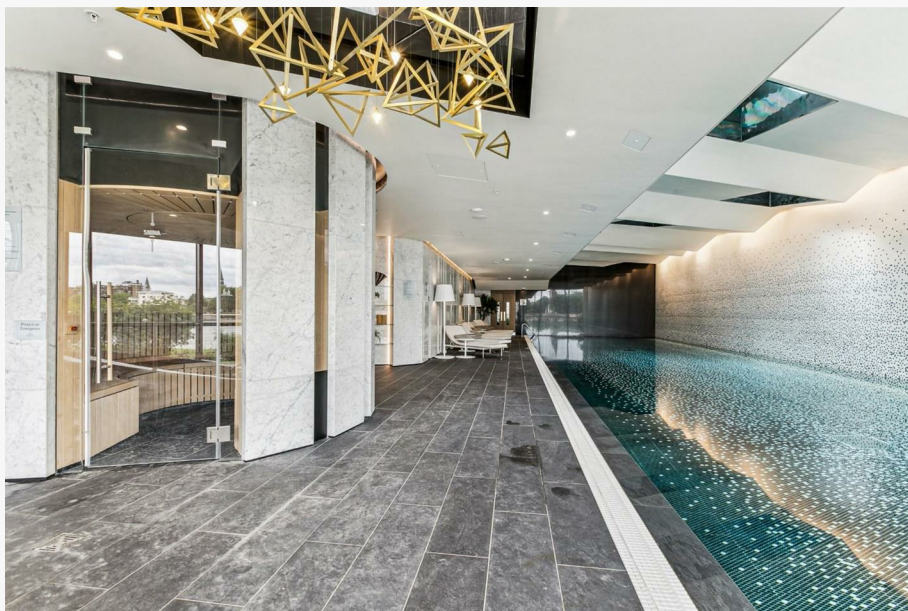
E: enquiries@napierwatt.co.uk

W: napierwatt.co.uk

35 Berkeley Square, Mayfair, London, W1J 5BF







Description

A stunning three bedroom, three bathroom, fourth floor apartment with direct views over the landscaped gardens and the River Thames.

Chelsea Waterside is a luxurious new development by CK Asset Holdings comprises and Sir Terry Farrell, the 4.58 hectare site includes the historic former Lots Road Power Station, a Grade II listed building and one of Chelsea's most well-known and best loved landmarks. When complete, the scheme will comprise ten buildings spread across 600 meters of unique waterfront living, including two stand-out towers on either side of Chelsea Creek. Apartments in the towers will have stunning river views from Chelsea in the West to Canary Wharf in the East.

This flat has one parking space in the secure underground parking garage and the development has a swimming pool and gym.

Entrance Hall : Reception Room : Fitted Kitchen : 3 Bedrooms : 3 Bathrooms (2 ensuite) : Balcony : Secure Parking : Communal Gardens : Comfort Cooling : Residents Gym and Swimming Pool : EPC Rating B :

Key Features

- DIRECT RIVER VIEWS
- RESIDENTS SWIMMING POOL
- CCTV
- SECURE UNDERGROUND PARKING
- BALCONY
- COMMUNAL GYM AND GARDENS
- 24 HOUR CONCIERGE
- Comfort Cooling

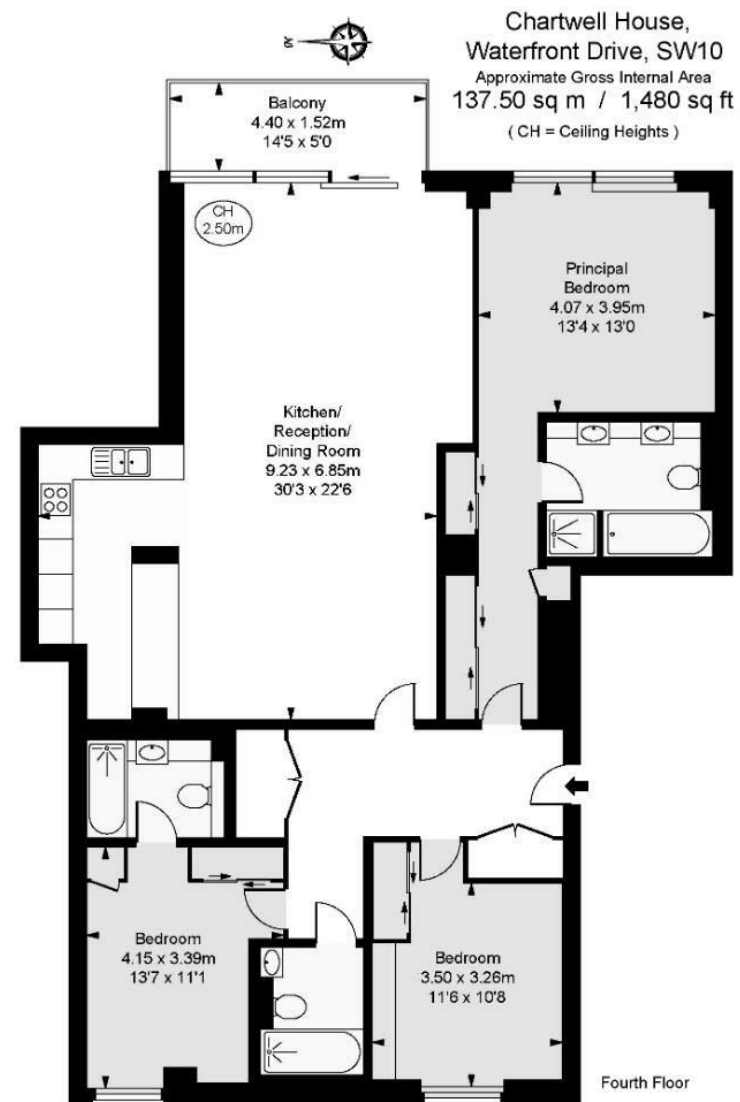
Terms

Leasehold: Expiring on 28 September 2996 ie 972 years remaining.

Service Charge: £13,472 PA.

Ground Rent £1,000pa

Parking space included.



IMPORTANT: We would inform prospective purchasers that these sales particulars have been prepared as a general guide only. A detailed survey has not been carried out, nor the services, appliances and fittings tested. Room sizes should not be relied upon for furnishing purposes and are approximate. If floor plans are included, they are for guidance only and illustration purposes only and may not be to scale. If there are any important matters likely to affect your decision to buy, please contact us before viewing the property.