



KINVEACHY GARDENS, SE7

£950,000

Semi-detached house

Four bedroom

Two bathrooms

Victorian

High-quality finish

Energy rating: c

@marshandparsons
marshandparsons.co.uk

MARSH &
PARSONS



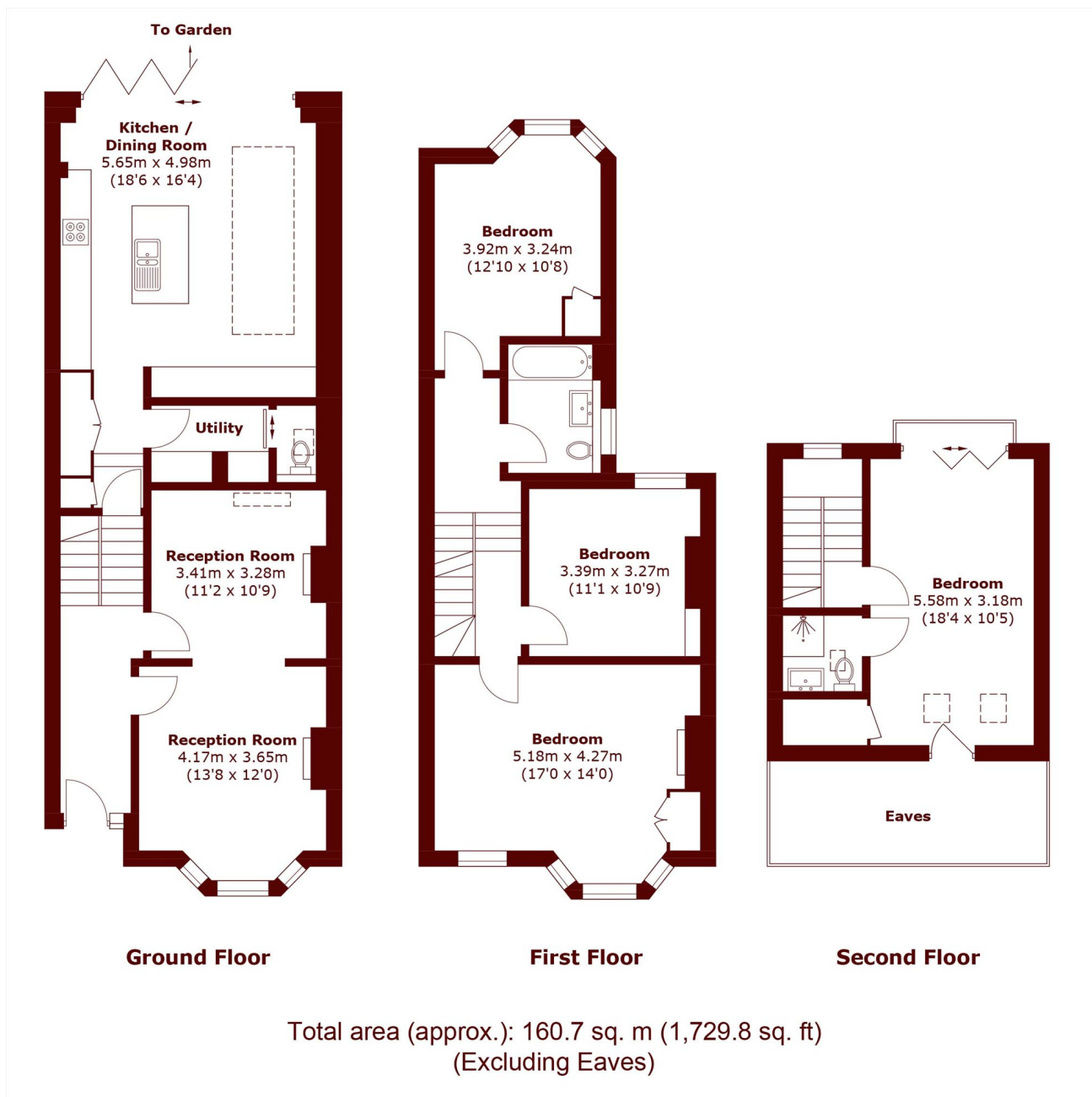
ABOUT THE PROPERTY

This attractive red-brick Victorian terrace offers generous living space and a high-quality finish throughout. The ground floor includes a double reception room, utility room, bathroom, and an extended open-plan kitchen/living area opening onto a landscaped garden with side access. Upstairs are three double bedrooms and a family bathroom, while the loft provides an impressive principal bedroom with a stylish en suite.

Located near the Green Chain Walk and Maryon Wilson Animal Park, with pubs, shops, Charlton Lido, Greenwich attractions, excellent schools, and fast links via Charlton, Woolwich (Elizabeth Line), and North Greenwich (Jubilee Line).



STEP INSIDE KINVEACHY GARDENS



Charlton
020 8293 0454

Energy Rating: C We aim to make our particulars both accurate and reliable. However, they are not guaranteed; nor do they form part of an offer or contract. If you require clarification on any points then please contact us, especially if you're traveling some distance to view. Please note that appliances and heating systems have not been tested and therefore no warranties can be given as to their good working order

MARSH &
PARSONS