



# Maison Du Midi

Le Mont Mallet



# Maison Du Midi, Le Mont Mallet, St Martin, JE3 6DX

Situated in an elevated position above Gorey Harbour in one of Jersey's most outstanding locations commanding uninterrupted, breathtaking sea views.

The property although in need of complete renovation throughout, offers circa 5000 sq ft of accommodation, currently utilised as a large 3 bedroom main house and separate one bedroom annex and multiple reception rooms all taking advantage of the stunning views.

Externally there is a large front garden and terrace areas, double garage and parking.

A rare opportunity to create a stunning substantial family home in this sought after location.



4



4



4

Parish: St Martin

Qualification: Qualified

Tenure: Freehold

Price £2,750,000



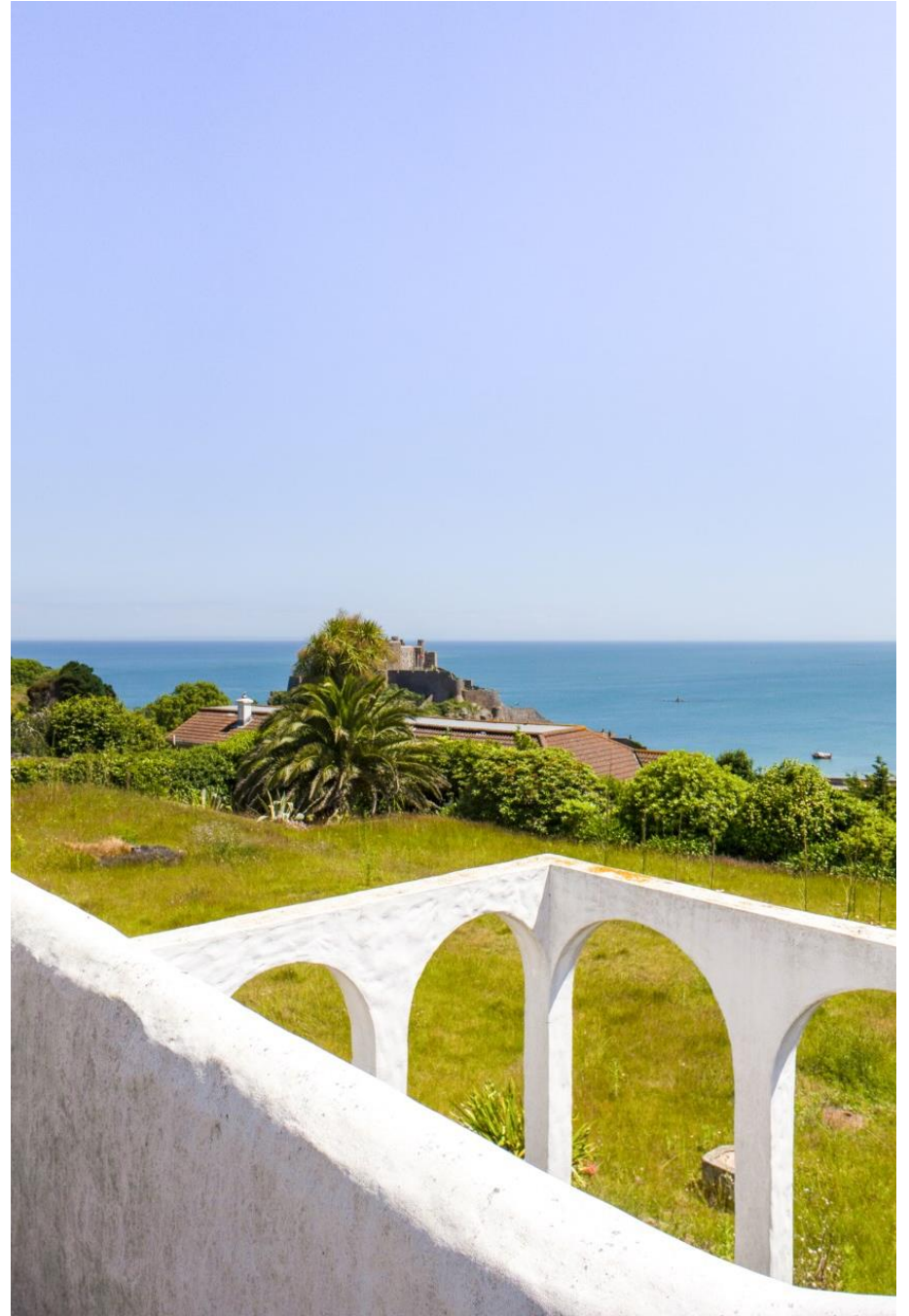
- Stunning sea views
- Renovation project
- Sought after location
- 5000 sq ft of accommodation
- Large garden and terrace
- Double garage and parking







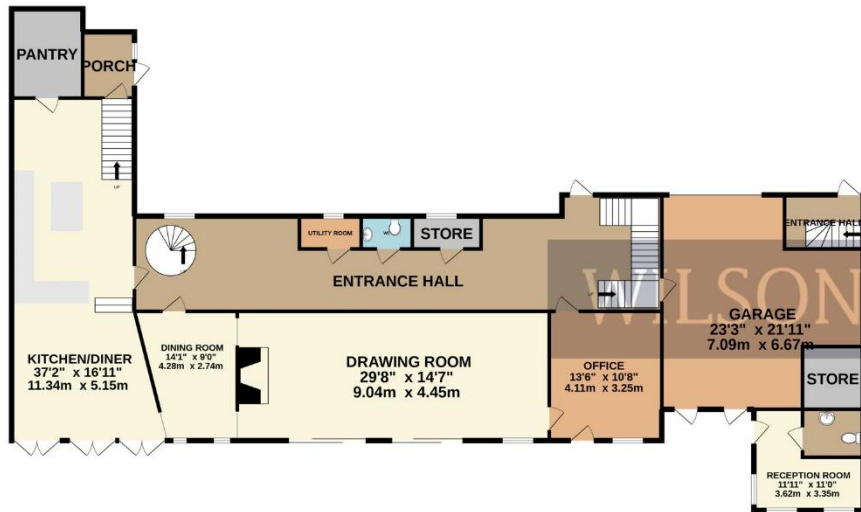




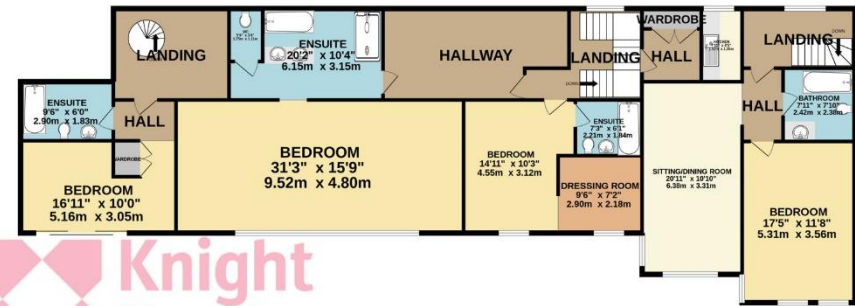




GROUND FLOOR  
2652 sq.ft. (246.4 sq.m.) approx.



1ST FLOOR  
2270 sq.ft. (210.9 sq.m.) approx.



TOTAL FLOOR AREA : 4922 sq.ft. (457.3 sq.m.) approx.

Whilst every attempt has been made to ensure the accuracy of the floorplan contained here, measurements of doors, windows, rooms and any other items are approximate and no responsibility is taken for any error, omission or mis-statement. This plan is for illustrative purposes only and should be used as such by any prospective purchaser. The services, systems and appliances shown have not been tested and no guarantee as to their operability or efficiency can be given.  
Made with Metropix ©2022

This plan is for layout guidance only. Not drawn to scale unless stated. Windows and door openings are approximate. Whilst every care is taken in the preparation of this plan, please check all dimensions, shapes and compass bearings before making any decisions reliant upon them.

+441534 877977

Knight Frank Jersey

37-39 Halkett Place, St. Helier, Jersey JE2 4WG

[knightfrank.je](http://knightfrank.je)

Your partners in property

---

1. Particulars: These particulars are not an offer or contract, nor part of one. You should not rely on statements given by Knight Frank Jersey in the particulars, by word of mouth or in writing ("information") as being factually accurate about the property, its condition or its value. Neither Knight Frank Jersey nor any joint agent has any authority to make any representations about the property, and accordingly any information given is entirely without responsibility on the part of Knight Frank Jersey. 2. Material Information: Please note that the material information is provided to Knight Frank Jersey by third parties and is provided here as a guide only. While Knight Frank Jersey has taken steps to verify this information, we advise you to confirm the details of any such material information prior to any offer being submitted. If we are informed of changes to this information by the seller or another third party, we will use reasonable endeavours to update this as soon as practical. 3. Photos, Videos etc: The photographs, property videos and virtual viewings etc. show only certain parts of the property as they appeared at the time they were taken. Areas, measurements and distances given are approximate only. 4. Regulations etc: Any reference to alterations to, or use of, any part of the property does not mean that any necessary planning, building regulations or other consent has been obtained. A buyer must find out by inspection or in other ways that these matters have been properly dealt with and that all information is correct. 5. Fixtures and fittings: A list of the fitted carpets, curtains, light fittings and other items fixed to the property which are included in the sale (or may be available by separate negotiation) will be provided by the Seller's Lawyer. Particulars dated 04/09/2025. All information is correct at the time of going to print.

