



Tufton Street, SW1P
£1,600,000

Dexters



Tufton Street, SW1P

Set on the fourth floor of a smart contemporary red-brick building, this stunning two-bedroom apartment combines modern design with effortless style which further benefits from lift access, daytime concierge, two modern bathrooms (en suite) and within close proximity to St. James's Park, Victoria and Westminster transport links.

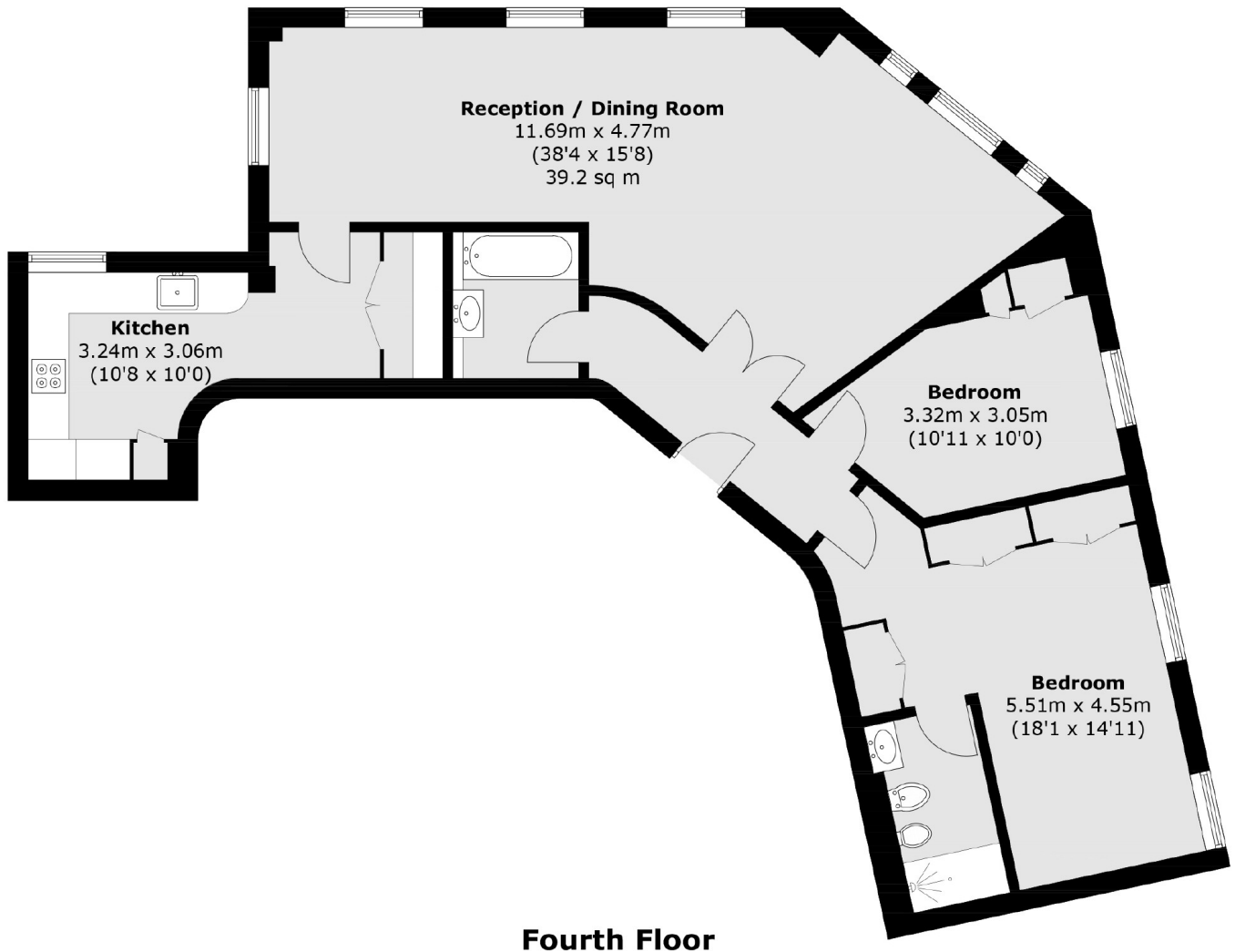
Tufton Street is in the heart of Westminster, located within easy reach of St James's Park and Victoria. The area includes some of London's most iconic landmarks and the many amenities, restaurants and shops of Victoria and Westminster.

Features

- Two Bedroom Apartment
- Share Of Freehold
- Modern Design
- Daytime Porter
- Fourth Floor
- Lift Access



Tufton Street,
London, SW1P



Total area (approx.): 104.0 sq. m (1,119.4 sq. ft)

Dexters

Westminster
50 Churton Street
London
SW1V 2LP
Sales
020 7590 9570

Energy Rating: C. We aim to make our particulars both accurate and reliable. However they are not guaranteed; nor do they form part of an offer or contract. If you require clarification on any points then please contact us, especially if you're traveling some distance to view. Please note that appliances and heating systems have not been tested and therefore no warranties can be given as to their good working order.

 **RICS** | Regulated
Estate Agent
and Letting Agent

[dexters.co.uk](https://www.dexters.co.uk)