



**BEAUCHAMP
ESTATES**

Upper Ground

BANKSIDE





Stunning three bedroom duplex apartment in Southbank Tower.



Exterior

Positioned on the upper floors of a landmark riverside tower, the apartment benefits from an elevated setting with uninterrupted views across the River Thames and central London skyline. The building provides a managed entrance with security and concierge presence, and residents have access to shared facilities within the development.

Highlights

- Spectacular panoramic views
- Floor-to-ceiling glazing in main living space
- Integrated kitchen with premium appliances





Interiors

Arranged over two levels, the layout separates entertaining and private accommodation. The lower floor is centred around an open-plan living, dining and kitchen space with full-height glazing, allowing consistent natural light and direct sightlines across the river. The kitchen is fitted with integrated appliances and streamlined cabinetry. A guest bedroom and bathroom sit on this level. The upper floor contains the principal suite with fitted storage and en-suite, alongside an additional bedroom and bathroom, all finished to a consistent specification.

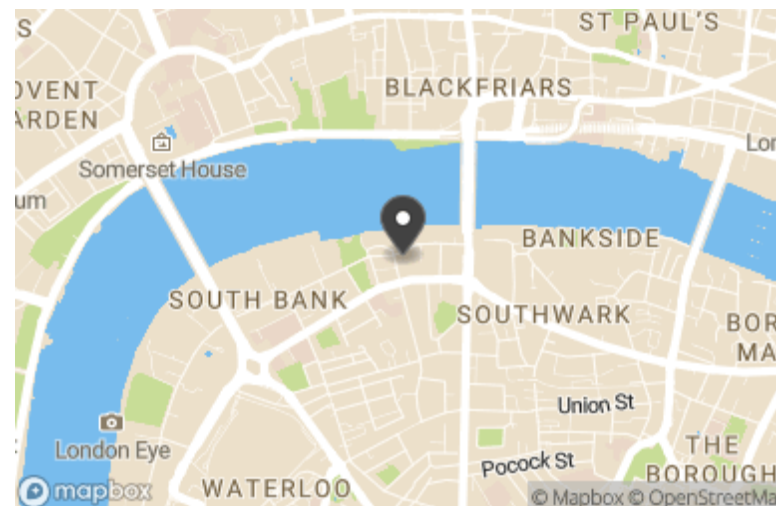


Features

- 24/7 Concierge
- Air Conditioning
- Furnished
- Off Street Parking
- Residents Leisure Facilities

Location

Southbank Tower sits on the South Bank, within reach of the area's theatres, galleries and riverside dining. Waterloo Station provides Underground, National Rail and international connections, while Blackfriars Station offers Thameslink services. The location also allows access to the City across Blackfriars Bridge and to the West End via the riverfront and nearby road links.

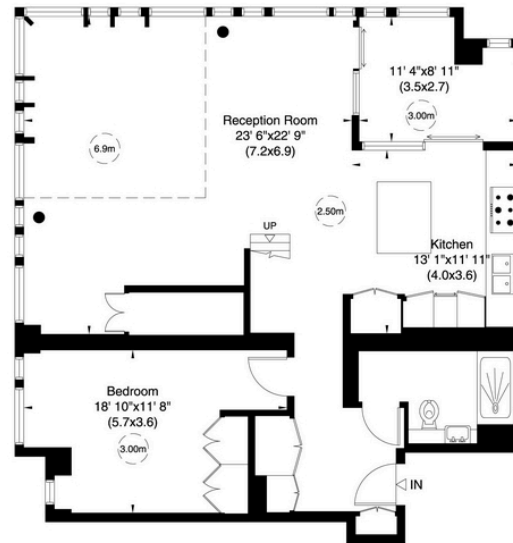


Terms

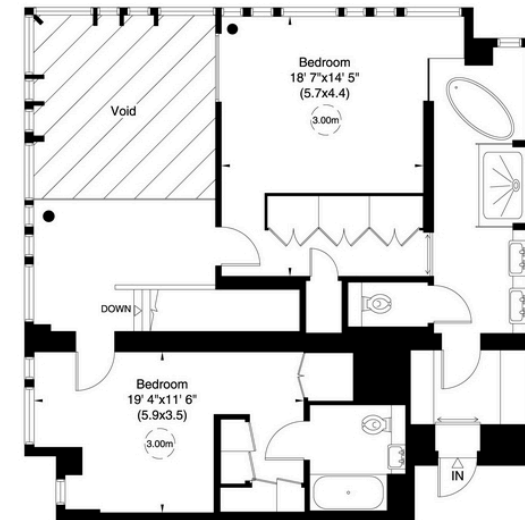
Price: £6,500 per week
 Tenure:
 Local Authority: Southwark
 Council Tax: H

3601 Southbank Tower, SE1

Gross internal area (approx.)
 205 Sq m (2208 Sq ft)
 For identification only, Not to Scale
 capital.020 8671 7722



Thirty-sixth Floor



Thirty-seventh Floor

Not to scale, for guidance only and must not be relied upon as a statement of fact. All measurements and areas are approximate only (and have been prepared in accordance with the current edition of the RICS Code of Measuring Practice).

Energy Efficiency Rating		Environmental Impact (CO ₂) Rating	
Current	Potential	Current	Potential
Very energy efficient - lower running costs		Very environmentally friendly - lower CO ₂ emissions	
(92+)	A	(92+)	A
(81-91)	B	(81-91)	B
(69-80)	C	(69-80)	C
(55-68)	D	(55-68)	D
(39-54)	E	(39-54)	E
(21-38)	F	(21-38)	F
(1-20)	G	(1-20)	G
Not energy efficient - higher running costs		Not environmentally friendly - higher CO ₂ emissions	
England, Scotland & Wales	EU Directive 2002/91/EC	England, Scotland & Wales	EU Directive 2002/91/EC

Beauchamp Estates, their clients and any joint agents give notice that: 1, They are not authorised to make or give any representation or warranties in relation to the property either here or elsewhere, either on their own behalf or on behalf of their client or otherwise. They assume no responsibility for any statement that may be made in these particulars. These particulars do not form part of any offer or contract and must not be relied upon as statements or representations of fact. 2. Any Areas, measurements or distances are approximate. The text photographs and plans are for guidance only and are not necessarily comprehensive. It should not be assumed that the property has all necessary planning, building regulation or other consents and Beauchamp Estates have not tested any services, equipment or facilities. Purchasers must satisfy themselves by inspection or otherwise.



**BEAUCHAMP
ESTATES**

Beauchamp Estates - Mayfair

24 Curzon Street,
London, W1J 7TF

020 7499 7722

londoninformation@beauchampestates.com

www.beauchampestates.com