



Lennox Road, London-N4 3JA
£4,750 pcm

**DAVID
ANDREW** | your
most
valuable
asset

This impressive four double bedroom maisonette presents a rare opportunity to secure an elegant and spacious residence with a private garden moments away from Finsbury Park station N4.

Spanning 1,088 square feet (101 square metres), the property is beautifully appointed with a modern, fully fitted kitchen that caters to all culinary needs, as well as a separate reception room ideal for both entertaining and relaxation. Large windows throughout the flat invite abundant natural light, enhancing the sense of space and highlighting the tasteful combination of wooden flooring and plush carpeting. Ample storage ensures a clutter-free living environment, while the layout is thoughtfully designed to maximise comfort and functionality.

Perfectly positioned close to a variety of local amenities such as bakeries, fantastic restaurants and cafés, gyms, and a Picture house Cinema. The green spaces of Finsbury Park and the nature reserve Parkland Walk are also within walking distance. Both Finsbury Park (Piccadilly and Victoria lines, National Rail and Thameslink services) and Crouch Hill (Suffragette Line) stations are minutes away, offering excellent transport links to the City and beyond. The property is offered fully furnished and is available from the 5th of September.

- Four Double Bedroom Maisonette
- Private Garden
- Comprising 1088sqft/101sqm
- Modern Fully Fitted Kitchen
- Double Glazed Windows
- Separated Reception Room
- Wooden Flooring and Carpet Throughout
- Walking Distance to Finsbury Park and Crouch Hill Stations
- Offered Furnished
- Available on 5th of September



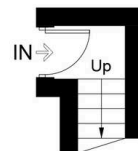
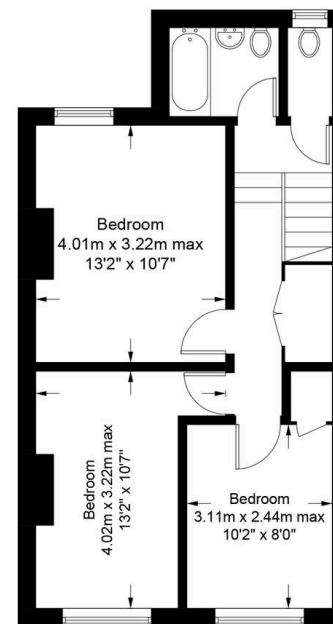
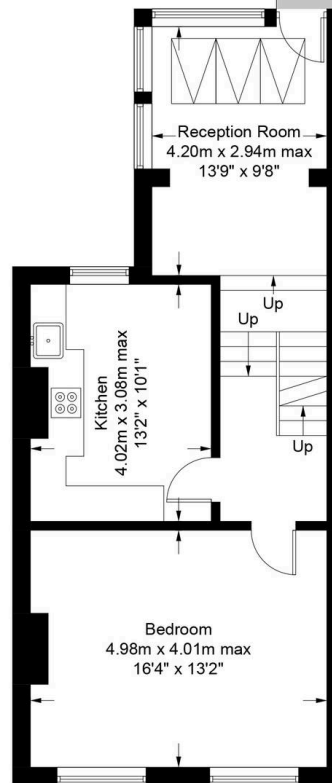
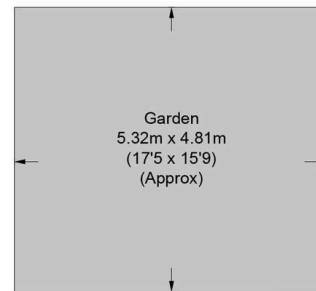




Lennox Road, N4

Approximate Gross Internal Area = 1088 sq ft / 101.1 sq m

DAVID ANDREW | your most valuable asset



Ground Floor

First Floor

Second Floor

scan to book a viewing



Certified Property Measurer

This plan is for layout guidance only. Not drawn to scale unless stated. Windows and door openings are approximate. Whilst every care is taken in the preparation of this plan, please check all dimensions, shapes and compass bearings before making any decisions reliant upon them. (ID1102391)

DAVID ANDREW | your most valuable asset

has been exercised in the of these particulars, out the property must not be as representations of fact. Prospective applicants and rely upon their own id those of professional s. David Andrew Estates bility for any error contained in these particulars.

Archway Office

671 Holloway Road
London, N19 5SE

T (0)20 7619 3750

Highbury Office

90 Highbury Park
London, N5 2XE

T (0)20 7354 9111

Finsbury Park Office

167 Stroud Green Road
London, N4 3PZ

T (0)20 7281 2000

Property Management Office

235 Blackstock Road
London, N5 2LL

T (0)20 7354 9222

