



Mount Park Road, Harrow on the Hill GUIDE £3,250,000

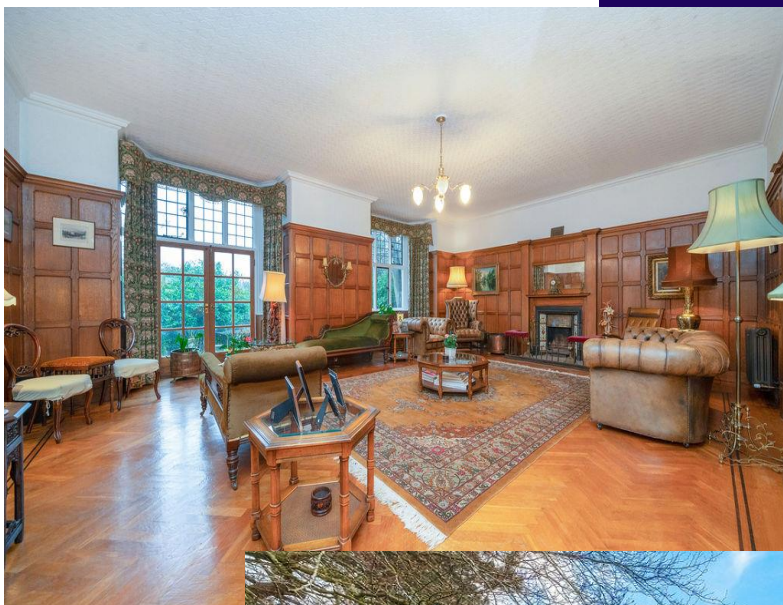
The Oaks & The Sheiling Mount Park Road, Harrow-on-the-Hill A substantial and imposing late Victorian property (circa 1884), beautifully positioned on high ground within a sought-after private estate. The property is vertically divided into two spacious self-contained residences: The Oaks (the principal house) designed by Robert "bungalow" Briggs and The Sheiling, built as staff quarters for those serving the main house. Despite being two halves of the same development, the two properties have differing but sympathetic design elevations with The Oaks recognised for its stonework and The Sheiling by its row of three gables and tile hanging. Both enjoy delightful views, exceptional privacy, and a tranquil setting with no through traffic. Mount Park Road is renowned for its natural beauty and is managed by a Residents' Association. The historic Harrow-on-the-Hill High Street is only a short walk away, while Harrow-on-the-Hill (Metropolitan Line) and South Harrow (Piccadilly Line) stations are approximately ½ mile and 1 mile respectively. The property retains many original period features, including oak panelling, parquet flooring, leaded light windows, and stone mullioned bays.



THE OAKS (Principal Residence)

Ground Floor

- Entrance Porch.
- Entrance Vestibule
- Lounge Hall (approx. 18' x 14'10")
- Cloakroom
- Drawing Room (approx. 25'6" x 21')
- Dining Room (approx. 24'8" x 14'9")
- Kitchen (approx. 15'3" x 14'10")
- Breakfast Area (approx. 11'7" x 9'7")
- Galleried Landing
- Bedroom 1 (approx. 20'3" x 15'3")
- En-Suite Bathroom
- Bedroom 2 (approx. 17'10" x 15'4")



Bedrooms 3 / 4

Bathroom 2

Bath with shower fitting, pedestal basin, WC, bidet, radiator.

Outside

- **Detached Double Garage**
- **Gardens**

Ground Floor

- **Entrance Porch**
- Cloakroom**
- Front Reception Room (approx. 12'6" x 19'3")**
- Kitchen (approx. 8'9" x 8')**
- Dining Room (approx. 17'6" x 9'3")**
- Landing**
- Front Bedroom (approx. 15'3" x 11'6")**
- Passage Room / Bedroom**
- Bathroom**
- Bedroom (approx. 11'8" x 9'5")**
- Outside**

Garage (approx. 17'4" x 9')

THE SHEILING



Property layouts are for general guidance and are not drawn exactly to scale. Measurements are taken at the widest points and bays, alcoves, wardrobes etc. may not be shown.