



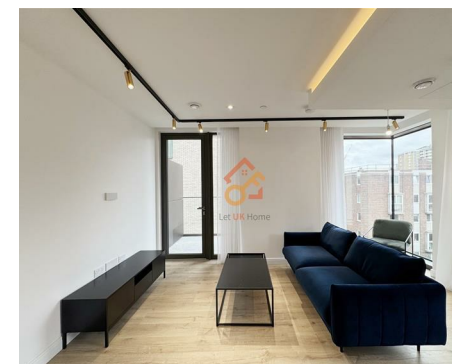
Let **UK** Home

**2 Bedrooms**

**Flat**

Located in London

**£4,250 Per Month**



[info@letukhome.co.uk](mailto:info@letukhome.co.uk)

<https://www.letukhome.co.uk/>

01795 358 886



# 8 Dingley Road London

EC1V 8DN



Let UK Home are excited to offer this spectacular two bedroom apartment in the heart of Vermont House part of the 250 City Road.

This property comprises a large bright open plan kitchen and living room leading to a large private balcony with great views, two double bedrooms with fitted wardrobes (master with an en-suite and a balcony), a large family sized bathroom and ample storage. A virtual viewing is provided.

This apartment offers luxury modern living at its finest and the residents will benefit from concierge service, swimming pool and gym, private cinema and residents lounge.

The community is close to Old Street and Angel subway stations, both of which are connected to the Northern Line, with direct access to King's Cross, London Bridge, Canary Wharf, Bond Street and Paddington.

It is only a short walk to London City University and Cass Business School, and the subway can also easily reach other universities such as University College London, London School of Economics, King's College London, University of the Arts London.

# 8 Dingley Road London

## £4,250 Per Month



- 3rd Floor
- Cinema & Game Room
- Sauna & Steam Room
- EPC Rating: B
- Cass Business School
- Concierge Service & 24h Security
- Swimming Pool & The Gym
- Virtual Viewing Available
- London City University





Let **UK** Home

3F 2 Eastbourne Terrace  
 Paddington  
 London  
 W2 6LG

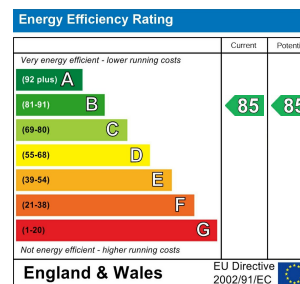
01795 358 886

info@letukhome.co.uk

**Council Tax Band: F**

**Local Authority:**

Agents Note: Whilst every care has been taken to prepare these particulars, they are for guidance purposes only. All measurements are approximate and are for general guidance purposes only and whilst every care has been taken to ensure their accuracy, they should not be relied upon and potential buyers/tenants are advised to recheck the measurements.



<https://www.letukhome.co.uk/>