

10 Gelynis Terrace, Morganstown

£0 Freehold

**** TRADITIONAL THREE BEDROOM MID TERRACE FAMILY HOME ** PARKING TO REAR ** NO CHAIN **** A traditional three bedroom mid terrace family home in the sought after area of Morganstown, being close to transport links and amenities. Entrance porch and hallway, bay fronted lounge, dining room, kitchen and ground floor bathroom. To the first floor are three bedrooms. Tiered rear garden with steps up to rear hardstand providing off road parking.

No chain. EPC Rating: tbc

Council Tax band: D

Tenure: Freehold

LOCATION

The property is situated in the popular Morganstown area of Cardiff. Local amenities include a public house, garden centre, hairdresser and regular bus service to and from the city centre. The M4 motorway and A470 links are nearby. The Taffs Trail is also a short walk away with cycle path and numerous walks.

ENTRANCE PORCH

Approached via a uPVC entrance door. Original wall tiling to half height.

ENTRANCE HALLWAY

Approached via the original wood panelled entrance door leading to the entrance hallway. Staircase to first floor.

LOUNGE

Dimensions: 13' 2" x 10' 7" (4.03 m x 3.24m) into bay. A bay fronted reception. Feature fireplace.

DINING ROOM

Dimensions: 11' 6" x 10' 10" (3.53m x 3.32m). With window to rear. Feature fireplace. Door to kitchen.

Kitchen

Dimensions: 10' 4" x 8' 0" (3.16m x 2.46m). With sink and side drainer to one side. Window and door to side. Under stairs storage cupboard. Door to bathroom.

FAMILY BATHROOM

Dimensions: 7' 1" x 4' 8" (2.17m x 1.43m). Comprising low level wc, wash hand basin and bath. Wall tiling to half height. Obscured glass window to side.

FIRST FLOOR LANDING

Approached via a turning staircase leading to the central landing area. Storage cupboard. Access to roof space.

BEDROOM ONE

Dimensions: 14' 2" x 10' 7" (4.32m x 3.24m). With two windows to front, a good sized primary bedroom.

BEDROOM TWO

Dimensions: 10' 9" x 8' 9" (3.29m x 2.69m). Overlooking the rear garden, a good sized second bedroom. Fitted wardrobe.

BEDROOM THREE

Dimensions: 9' 7" x 8' 1" (2.93m x 2.48m). Aspect to rear. Built out storage cupboard and built out airing cupboard housing the hot water cylinder.

OUTSIDE

REAR GARDEN

Low maintenance rear garden with tired levels. Upper level provides hardstand for parking.

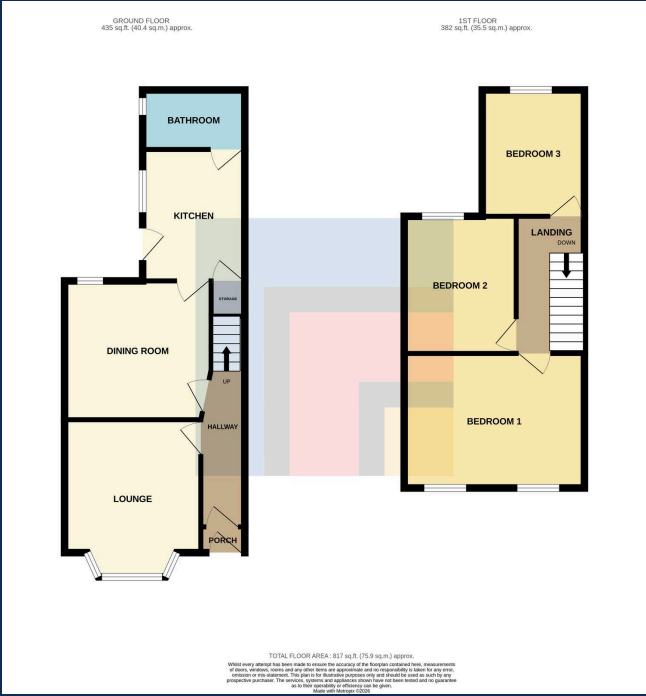
PARKING

With rear lane access providing hardstand parking to the rear.

FRONT GARDEN

Hedgerow and slow level stone wall. Slate chipping garden to front.





You can include any text here. The text can be modified upon generating your brochure.