



Stroud Way, TW15

£480,000

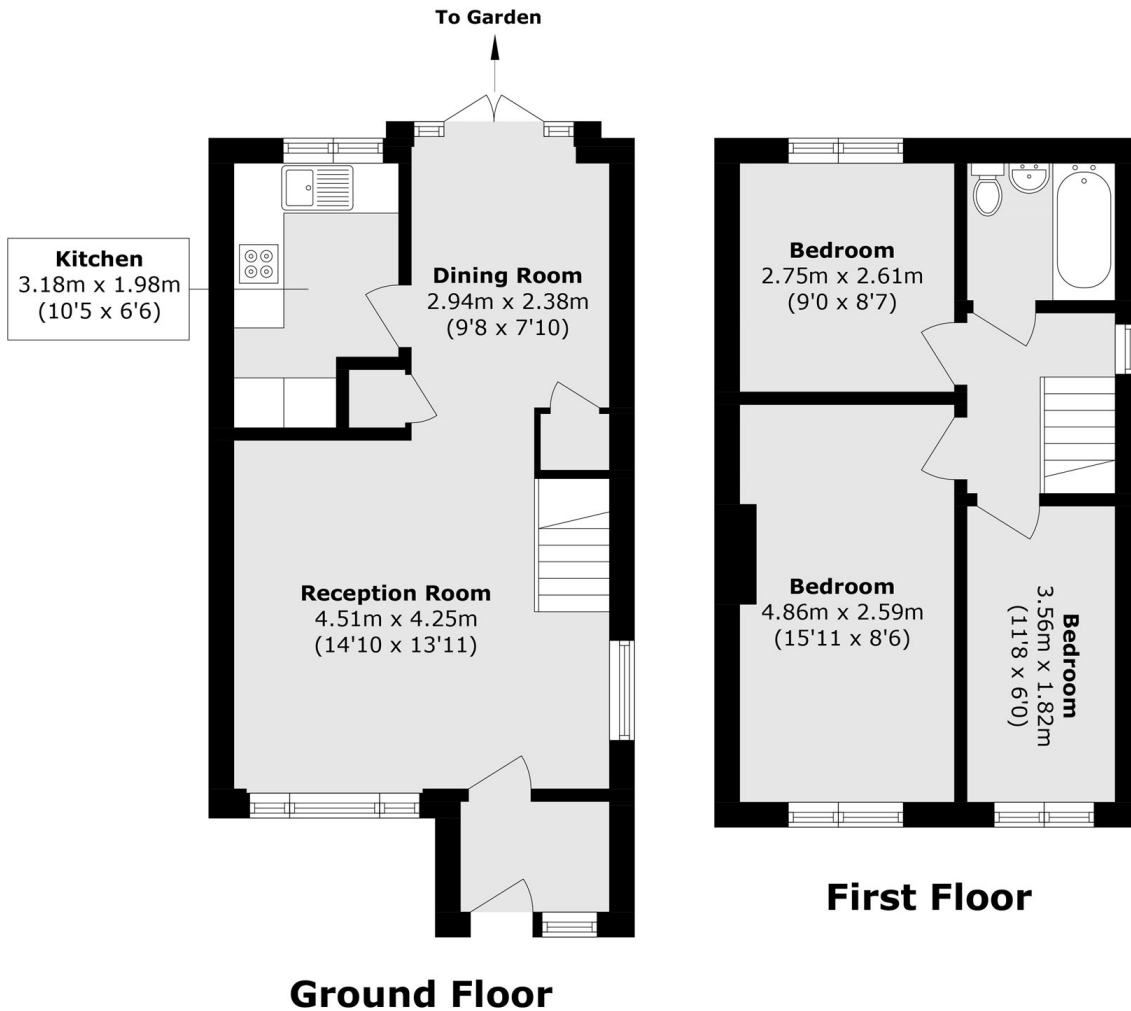
A beautifully presented three bedroom end-of-terrace home, complete with a private driveway and a generously sized family garden perfect for outdoor entertaining, summer barbecues, and relaxing with family and friends.

Stroud Way is a great location off School Road. Both Ashford High Street and Sunbury Cross are both approximately 1 mile away offering a great choice of shops and transport links.

Features

- Freehold
- End of Terrace
- Three Bedrooms
- Private Garden
- Driveway
- Potential to Extend (STPP)

Stroud Way, Ashford, TW15



Total area (approx.): 71.7 sq. m (771.8 sq. ft)