



GREYHOUND ROAD, W6

£2,550 per week (per month)

Two bedrooms
Two bathrooms
Split level
Close to transport

@marshandparsons
marshandparsons.co.uk

MARSH &
PARSONS

ABOUT THE PROPERTY

This spacious two-bedroom apartment is presented in excellent condition and benefits from an abundance of natural light. On the first floor the property comprises generous living room and separate kitchen with ample counter space & excellent storage. The second floor comprises two genuine double bedrooms, an en-suite with a large walk-in shower as well as a second family bathroom with a bath and shower. The apartment further benefits from being fully redecorated last year and has lovely views over the greenery of Bayonne Park.

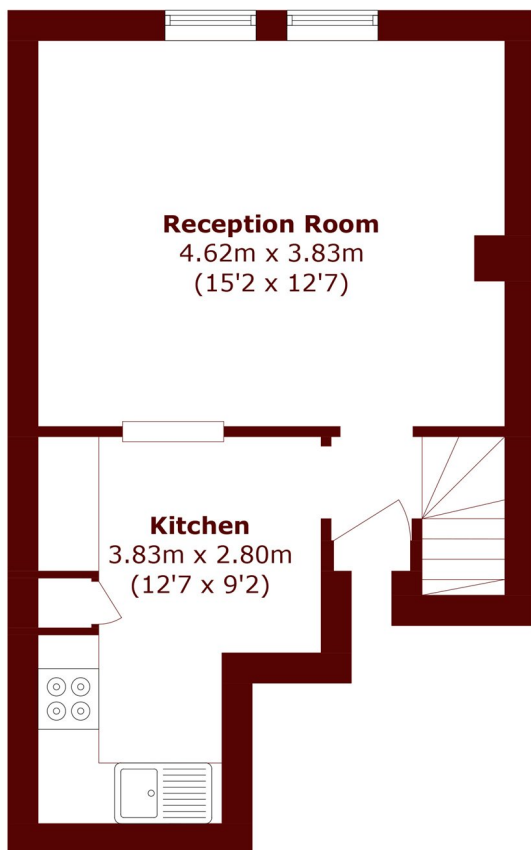
Greyhound Road is very well located close to the amenities of Fulham Palace Road with an array of local restaurants, cafes and bars all within a short walk of the



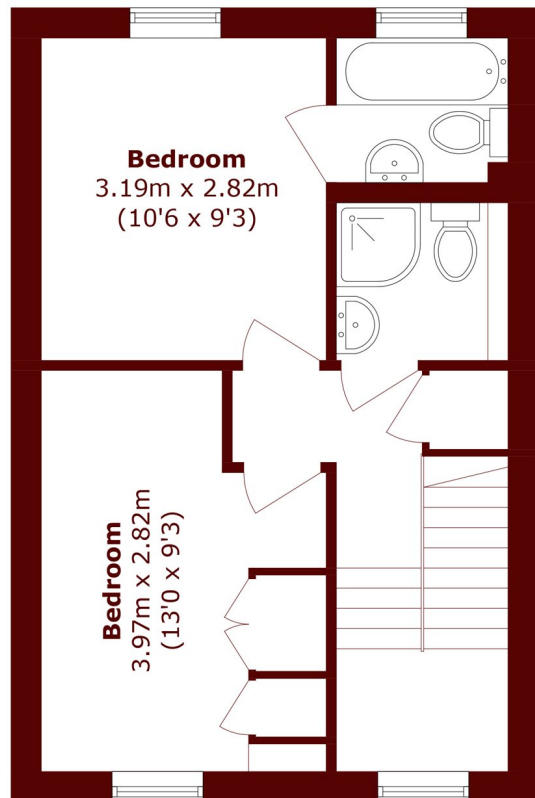




STEP INSIDE GREYHOUND ROAD



Second Floor



Third Floor

Total area (approx.): 63.0 sq. m (678.1 sq. ft)

Bishops Park
020 7368 2480

Energy Rating: We aim to make our particulars both accurate and reliable. However, they are not guaranteed; nor do they form part of an offer or contract. If you require clarification on any points then please contact us, especially if you're traveling some distance to view. Please note that appliances and heating systems have not been tested and therefore no warranties can be given as to their good working order

**MARSH &
PARSONS**