



Prestons Road, E14

£300,000

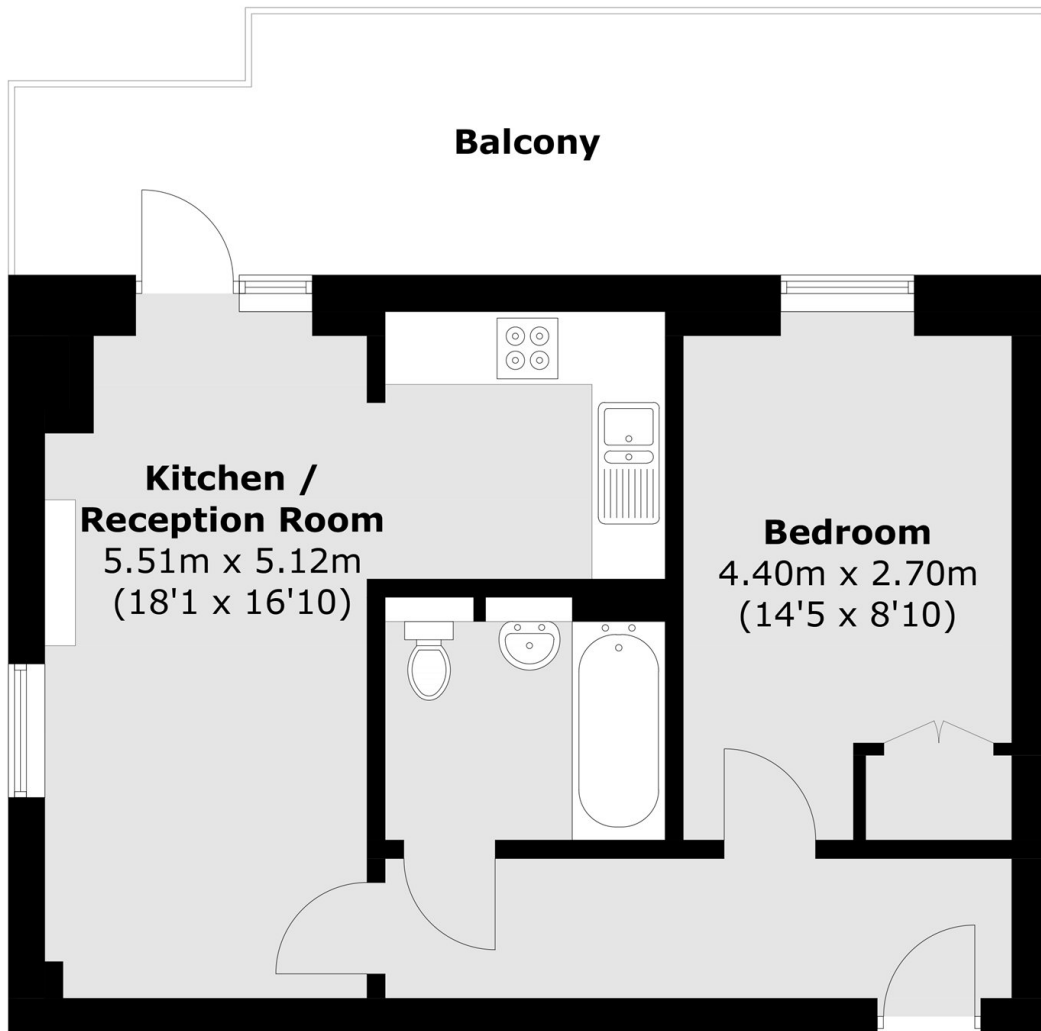
Offered to the market chain-free, this refurbished one-bedroom home benefits from a private terrace measuring 182 sq ft. The property further boasts a 24-hour concierge service, a residents' roof terrace, and a 900-year lease.

Wharfside Point is ideally located for Canary Wharf, offering excellent transport links to the City, along with a wide selection of shops, restaurants and bars.

Features

- 182 Square Feet Terrace
- Refurbished Throughout
- 24 Hour Concierge Services
- Canary Wharf Location
- 900 Plus Year Lease
- No Onward Chain

Prestons Road, London, E14



Total area (approx.): 45.2 sq. m (486.5 sq. ft)
Balcony: 17.0 sq. m (182.9 sq. ft)