

Alternative
available



Price

£1,800 PCM

Fees Apply



Available 30/06/26

Union Street Maidstone
ME14

Wards

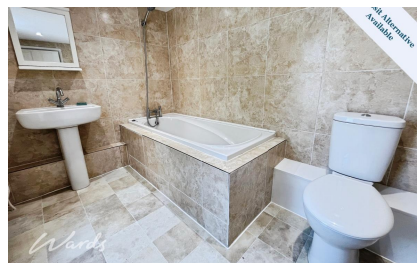
Helping you move forwards



Alternative Available



Alternative Available



Alternative Available



Alternative Available

Main Features

- [Video Walk About Available](#)
- [Alternative Deposit Option Available](#)
- [Modern bathroom](#)
- [Town Location](#)
- [Set Over Three Floors](#)
- [Recently refurbished](#)



Deposit required is £2,076.92
Maidstone District - Council Tax Band Tax Band C

Renting a property is a big commitment and we recommend that you visit the local authority website and these websites which offer helpful information and advice about letting

www.gov.uk/government/publications/how-to-rent

www.gov.uk/private-renting

www.wardsofkent.co.uk/renting/tenancy-fees-individuals/

www.gov.uk/green-deal-energy-saving-measures

Call Maidstone 01622 675064 ■ wardsofkent.co.uk

IMPORTANT INFORMATION: Please contact our Lettings Team who will confirm the total costs involved in renting this property. For clarification, we wish to inform the prospective tenant that we have prepared these details as a general guide. The agent has not carried out a detailed survey nor tested the services, appliances, or specific fittings (unless otherwise stated), and no warranty can be given as to their condition. All room measurements are taken at floor level. We strongly recommend that all the information which we provide about the property is verified by yourself and your advisers. The contents of this publication are © Wards, 2015. Wards is a trading name of Arun Estates Limited Registered in England No. 2597969

Accommodation

Living Room 4.40m x 3.40m

Kitchen 3.60m x 3.43m

Landing

Bedroom 3 3.63m x 2.62m

Landing

Bedroom 4 2.60m x 2.44m

Bathroom 2.74m x 1.83m

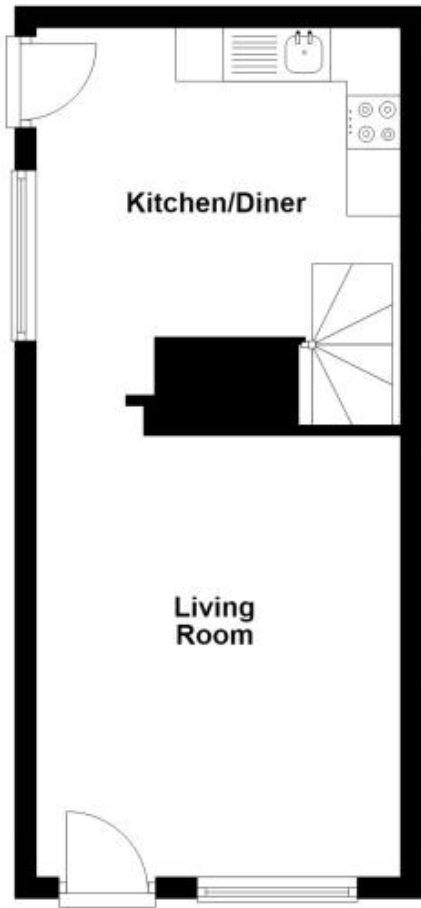
Bedroom 1 6.50m x 3.30m

Bedroom 2 3.86m 3.02m



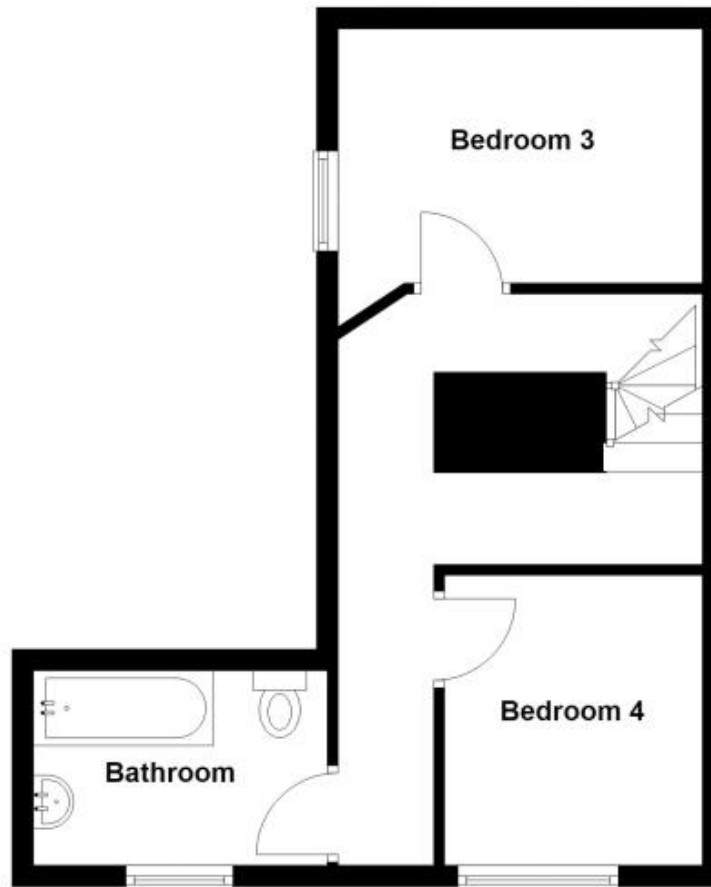
Ground Floor

Approx. 26.5 sq. metres (285.1 sq. feet)



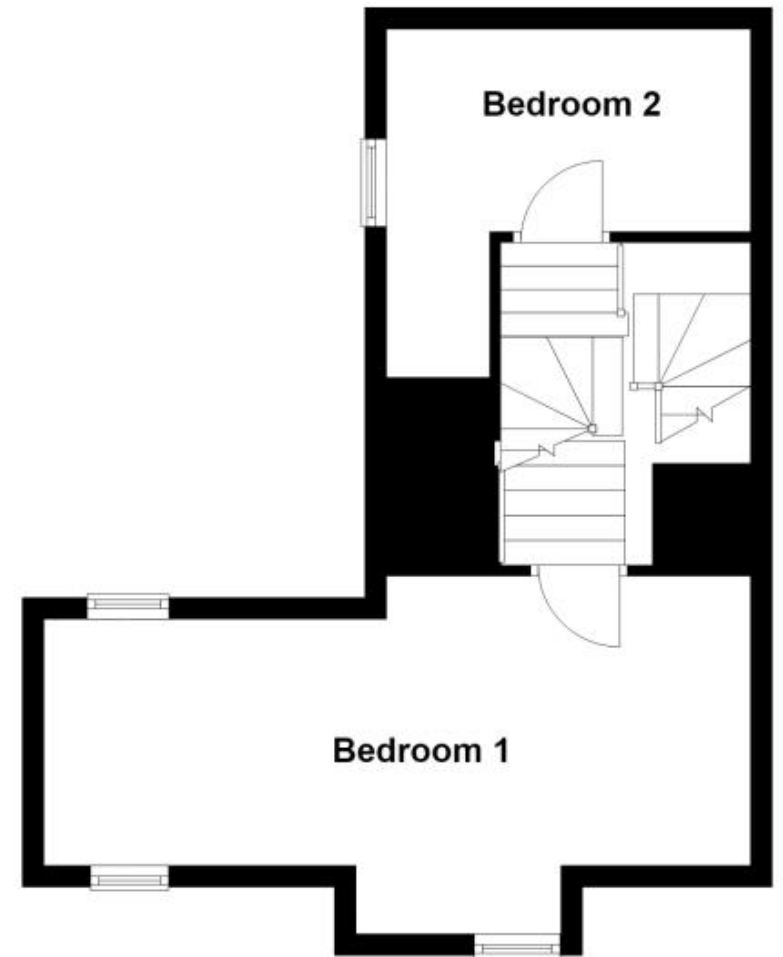
First Floor

Approx. 31.7 sq. metres (341.5 sq. feet)



Second Floor

Approx. 35.1 sq. metres (378.2 sq. feet)



Total area: approx. 93.3 sq. metres (1004.8 sq. feet)