



Cross Way, NW10

£876 Per week

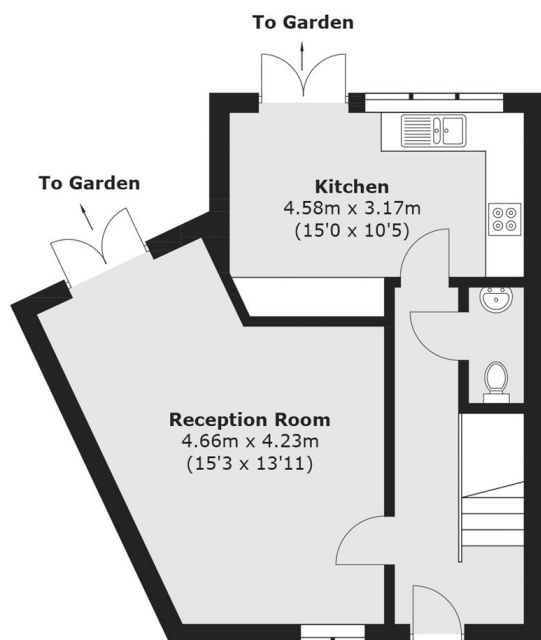
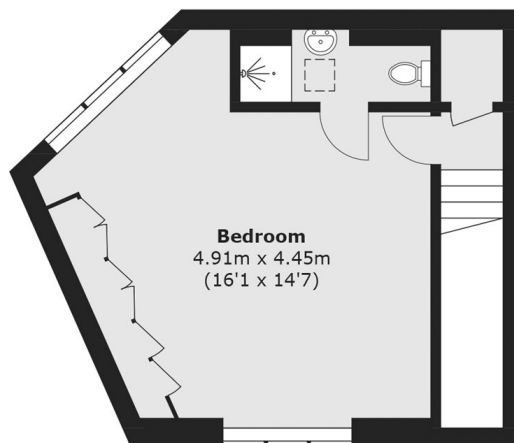
A modern and stylish four double bedroom house split over three floors. On the ground floor you will find a generous reception and a separate kitchen, both leading on to the garden. On the first floor are three well proportioned bedrooms and a master suite on the top floor.

Robson Avenue is within a short walking distance to Roundwood Park and Willesden Sport Centre and a vast range of shops and amenities. Willesden Junction, Dollis Hill and Kensal Green Stations are also within walking distances.

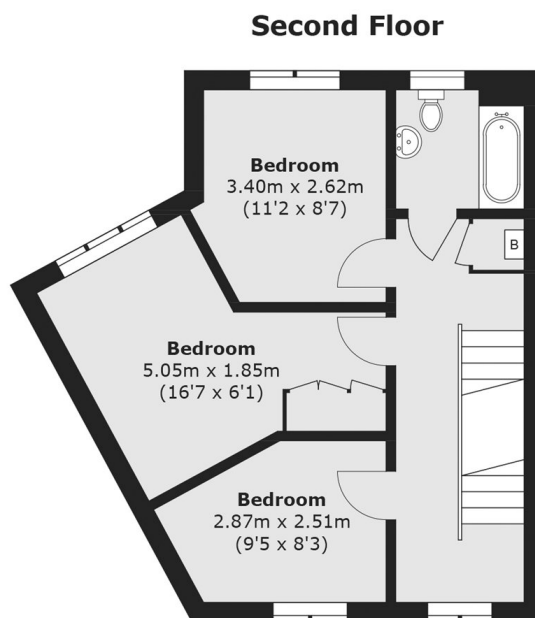
Features

- Four Bedrooms
- House
- Private Garden
- Great Location
- Double Glazed Windows
- Modern

Cross Way, London, NW10



Ground Floor



First Floor

Total area (approx.): 134.6 sq. m (1,448.9 sq. ft)