



TSHIRE GARDENS

RYELAND WAY

HUNTERS[®]
HERE TO GET *you* THERE

 4  2  2  B

Ryeland Way, Bridgefield

Offers In The Region Of £400,000

HUNTERS[®]

HERE TO GET *you* THERE

Occupying an enviable position overlooking attractive open green views to the front elevation. This exceptional four-bedroom semi-detached family home offers stylish, contemporary living in one of the area's most desirable residential developments.

Beautifully presented throughout and finished to an impressive standard, the property provides spacious and versatile accommodation perfectly suited to modern family life. From the moment you step inside, the attention to detail and quality of finish are immediately apparent, creating a home that is both elegant and welcoming.

The ground floor centres around a superb contemporary kitchen, thoughtfully designed with an extensive range of fitted units, quality granite work surfaces and integrated appliances, providing the ideal space for everyday family living and entertaining alike. The bright and airy accommodation flows effortlessly throughout, with generous living spaces enhanced by an abundance of natural light.

Upstairs, the property continues to impress with four well-proportioned bedrooms, including a superb principal bedroom complete with its own stylish en-suite shower room. The remaining bedrooms are served by a modern family bathroom, all finished to a high specification.

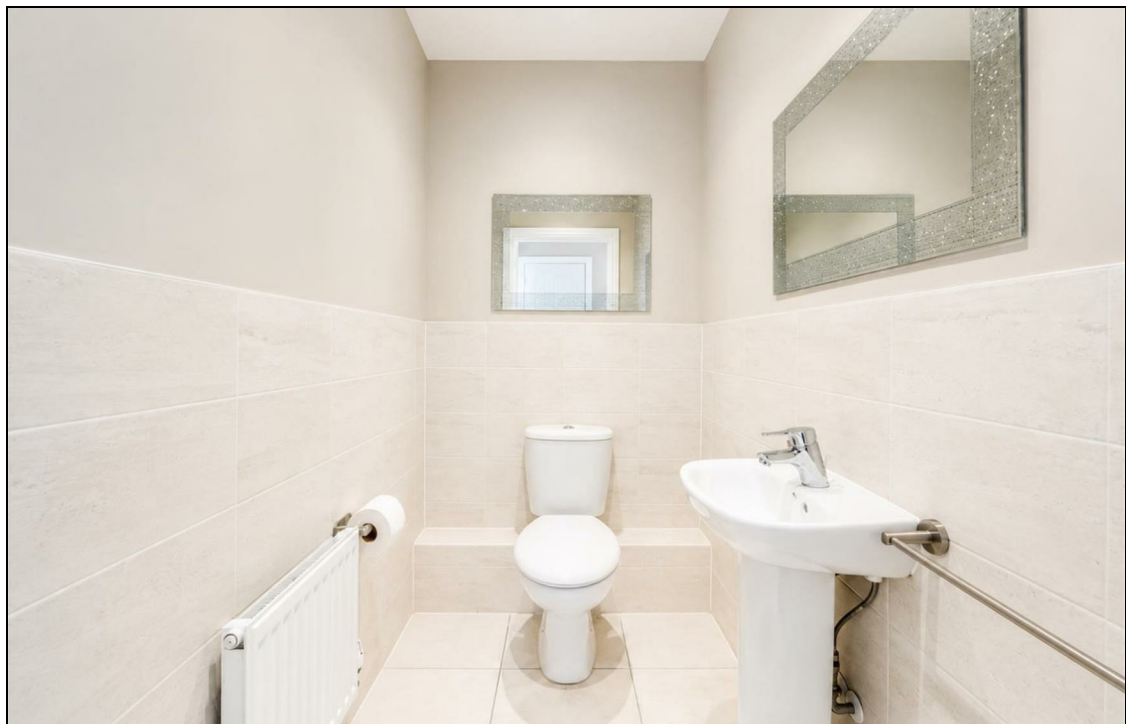
Externally, the property enjoys an attractive frontage with uninterrupted views across the green to the front, offering a wonderful sense of openness rarely found on modern developments. A car port & driveway provides covered parking for two vehicles, with additional visitor parking available nearby. Other features to name are a full boarded loft space, with loft ladder & lighting.

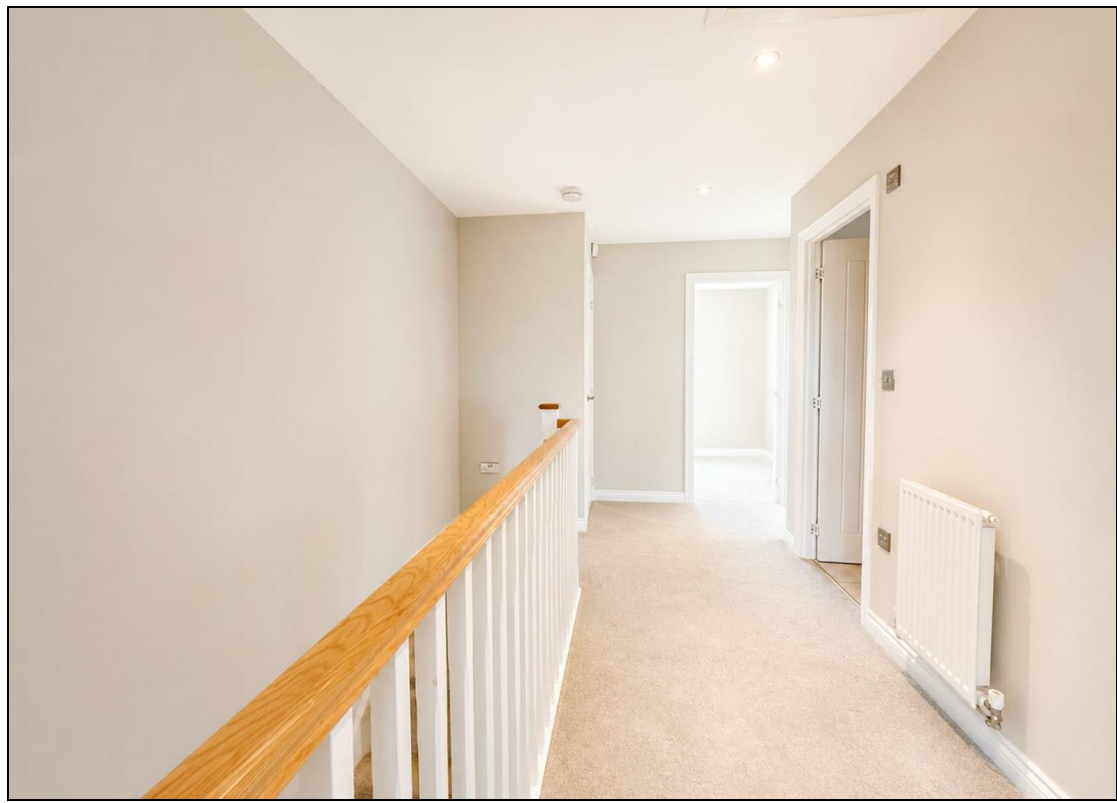
The location is equally appealing, positioned within easy reach of highly regarded local schools, everyday amenities, countryside walks and excellent transport connections, making it an ideal choice for growing families and professional buyers alike.

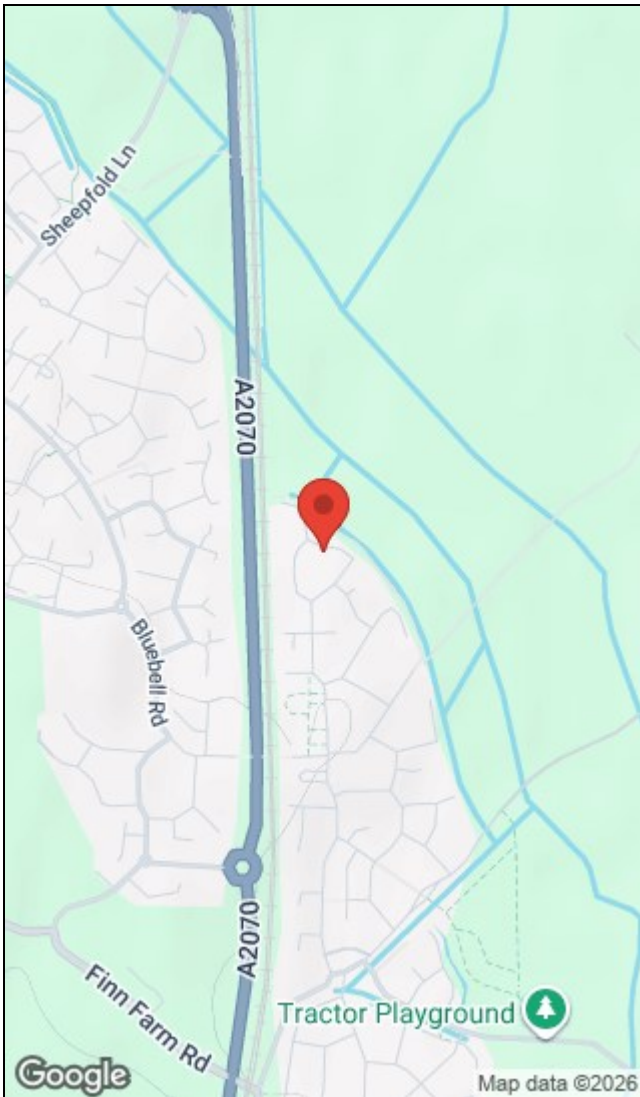
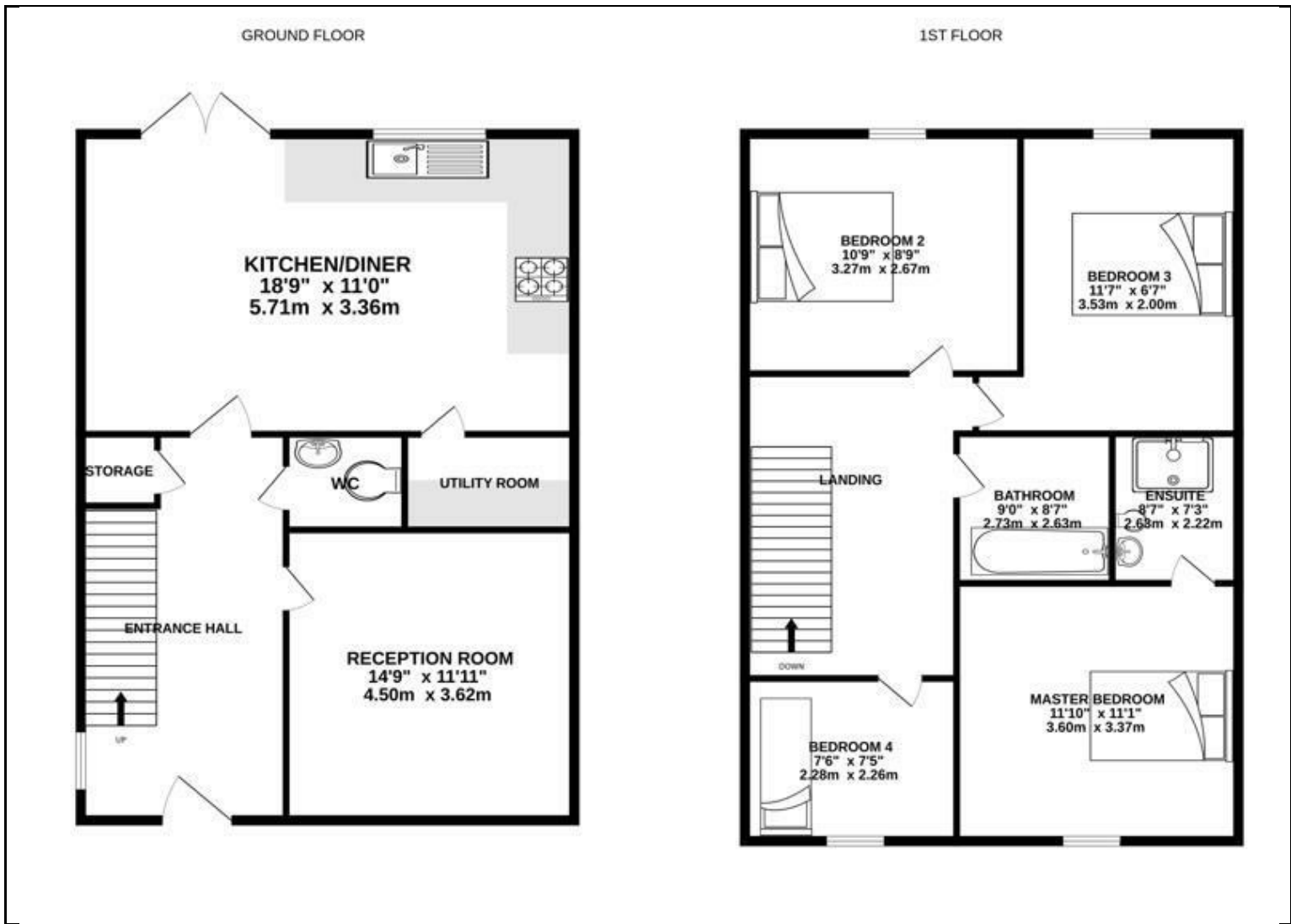
KEY FEATURES

- Four-bedroom semi-detached family home - Sold with No Onward Chain & Ready to move into!
 - Attractive un-spoilt views to the front elevation
 - GF W/C, Family Bathroom & En-suite shower room
- Contemporary fitted kitchen with modern work surfaces & separate utility room
- Principal bedroom with ensuite shower room & offering great views
 - 3 Further well sized bedrooms + Family bath-suite
- Generous, mainly laid to lawn rear garden with wooden-shed & side access
 - Car port & Driveway providing off street parking for 2 / 3 vehicles
 - Close to popular schools, amenities and transport links
- EPC Rating: B (84) - Council Tax Band: E - Estate fee's: £234.64 (2026)









Energy Efficiency Rating		Environmental Impact (CO ₂) Rating	
	Current	Potential	
Very energy efficient - lower running costs			Very environmentally friendly - lower CO ₂ emissions
(92 plus) A		94	(92 plus) A
(81-91) B			(81-91) B
(69-80) C			(69-80) C
(55-68) D			(55-68) D
(39-54) E			(39-54) E
(21-38) F			(21-38) F
(1-20) G			(1-20) G
Not energy efficient - higher running costs			Not environmentally friendly - higher CO ₂ emissions
84			
EU Directive 2002/91/EC			EU Directive 2002/91/EC
England & Wales			England & Wales

21 Cedar Parade, Repton Park Avenue, Repton Park, Ashford, Kent, TN23 3TE | 01233 613613
 ashfordsales@hunters.com | www.hunters.com



This Hunters business is independently owned and operated by Black & White Estates Limited | Registered Address: 21 Cedar Parade, Repton Park Avenue, Repton Park, Ashford, TN23 3TE | Registered Number: 6907358 England and Wales | VAT No: 973 6297 73 with the written consent of Hunters Franchising Limited.