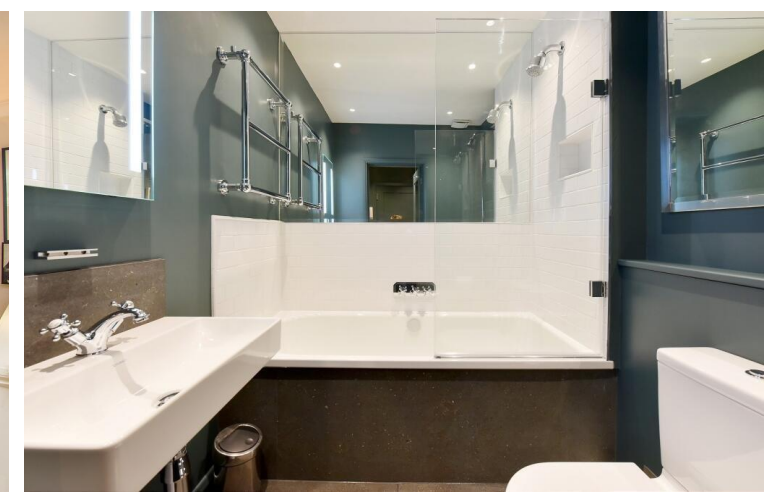




Roland Gardens  
South Kensington, SW7

CHESTERTONS





A stunning raised ground floor one bedroom apartment with a mezzanine bedroom. Featuring high ceilings, wood floorings and a beautiful bay window the apartment would suit a single person or a couple looking for short term accommodation.

- 1 bed
- 1 bath
- High ceilings
- Good storage

**£3,358 pcm**

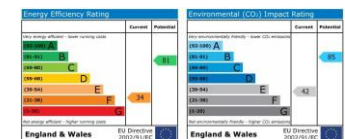
Additional tenant charges apply (fees apply to non-AST tenancies only)

Tenancy Agreement Fee: £300

References per Tenant/Guarantor: £60

Inventory check (approx. £100 – £250 inc. VAT)

[chestertons.co.uk/property-to-rent/applicable-fees](http://chestertons.co.uk/property-to-rent/applicable-fees)



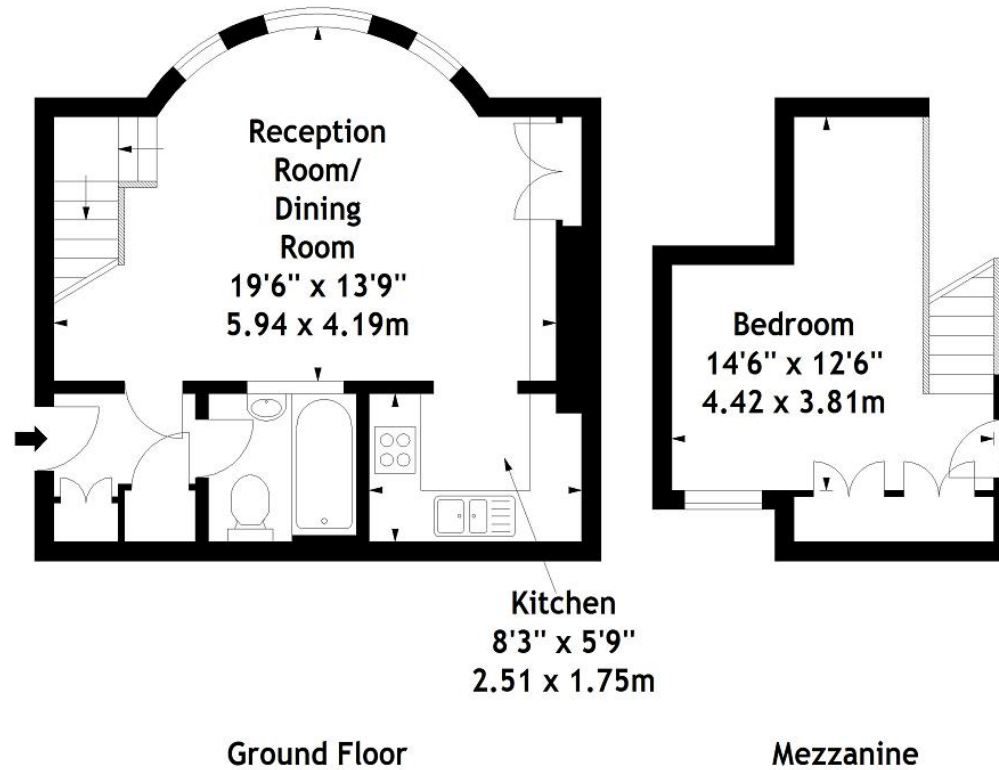
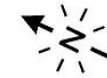
**Minimum Term:** 12 months  
**Deposit Required:** £3,874.62  
**Local Authority:** Kensington and Chelsea  
**Council Tax Band:**  
**EPC Rating:** To be confirmed  
**Furnished**

*Chestertons South Kensington Lettings*

44-48 Old Brompton Road  
 South Kensington  
 London  
 SW7 3DY

[southkensingtonlettingsusers@chestertons.co.uk](mailto:southkensingtonlettingsusers@chestertons.co.uk)  
 02075891244

Roland Gardens, SW7  
Approx. Gross Internal Area  
472 Sq Ft - 43.85 Sq M



Measured in accordance with RICS guidelines. Every attempt is made to ensure accuracy, however all measurements are approximate. This floor plan is for illustrative purposes only and is not to scale.

© Datography Ltd 2014  
Photographs \* Floorplans \* Virtual Tours  
Tel: 0845 643 4401 [www.datography.com](http://www.datography.com)

