



Underwood, Littleworth

In Excess of **£765,000**

Waymark

Underwood

Littleworth, Faringdon

A rare opportunity to purchase this beautifully presented detached family home, situated in the charming and sought-after village of Littleworth in Oxfordshire. Meticulously extended and refurbished to a high and exacting standard by the current owners, this impressive residence offers spacious and flexible accommodation ideal for modern family living.

The property features four generous double bedrooms, including a master suite with built-in wardrobes and a stylish en-suite shower room. The versatile layout includes four bright and airy reception rooms, with highlights such as a contemporary open-plan kitchen/diner complete with bi-fold doors opening onto the rear garden, a cosy sitting room with a wood-burning stove, a large dual-aspect home office, and a family room/bedroom four with its own en-suite shower room—perfect for guests or multi-generational living. Further benefits include a welcoming entrance hall, a utility area, and a ground floor WC.

Outside, the property is approached via a gated driveway with ample off-street parking and a detached single garage. The private rear garden is beautifully landscaped with mature trees and hedging, offering a tranquil and secluded outdoor space. A gravelled terrace area provides an ideal spot for entertaining, complemented by a storage shed for added convenience.

This exceptional home combines village charm with high-spec modern finishes and is ideal for families seeking space, privacy, and a peaceful countryside setting within easy reach of local amenities and excellent transport links.

The property is freehold and is connected to mains electricity, water and drainage. There is oil fired central heating and upvc double glazing. This property must be viewed to be fully appreciated.





Underwood

Littleworth, Faringdon

Littleworth is a small village approximately two miles north east of Faringdon, with a parish church. In the 16th century Wadley Manor was leased to the Unton family, who were prominent at the court of Queen Elizabeth I, among them Henry Unton, the diplomat. The house was visited by The Queen in 1574 and by King James I in 1603. It has a playing field and a village reading room as well as an Asian restaurant, The Snooty Mehmaan. The historic market town of Faringdon, nearby, dating back at least to the 12th century, has a thriving community and amenities such as the Leisure Centre, Library, Faringdon Community College, Junior and Infant schools as well as The Old Station Nursery, a doctor's surgery and a Family Centre. The Tower on Folly Hill was built by Lord Berners in 1935 and affords panoramic views across four counties. There is also great access to local private schools such as St Hugh's which is within walking distance and Pinewood which is only a short drive down the A420.

Council Tax band: F

Tenure: Freehold

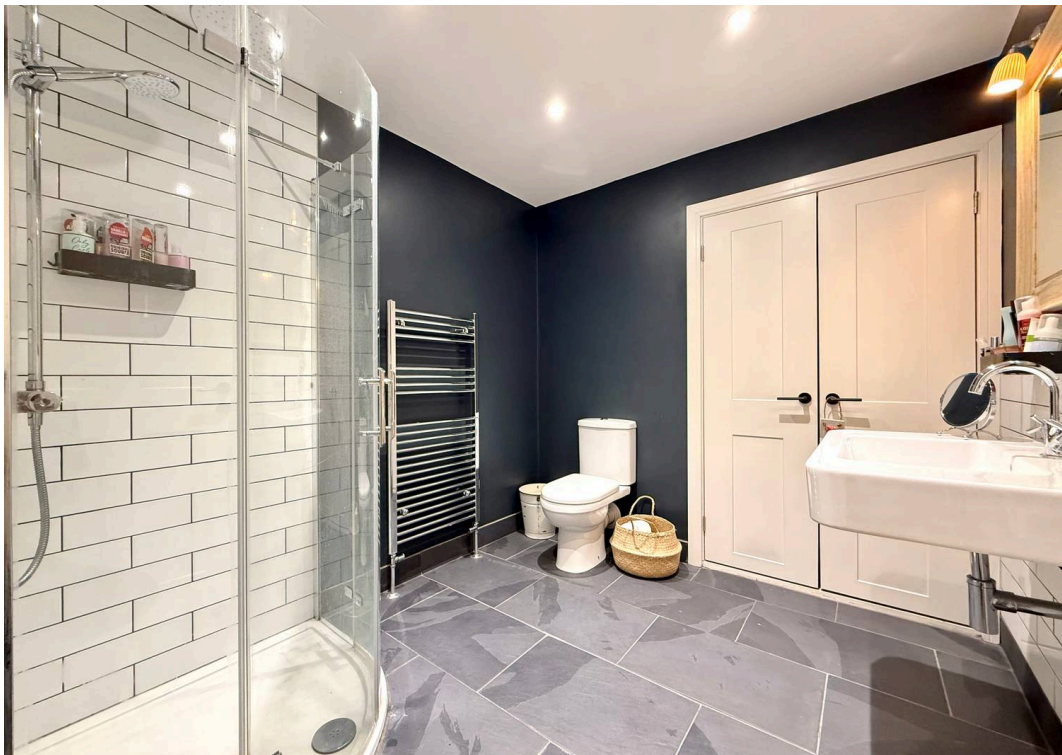
EPC Energy Efficiency Rating: E

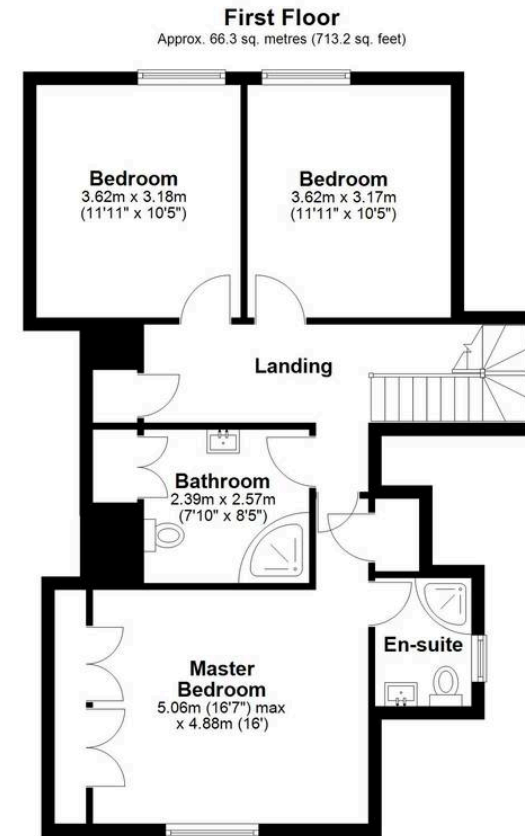
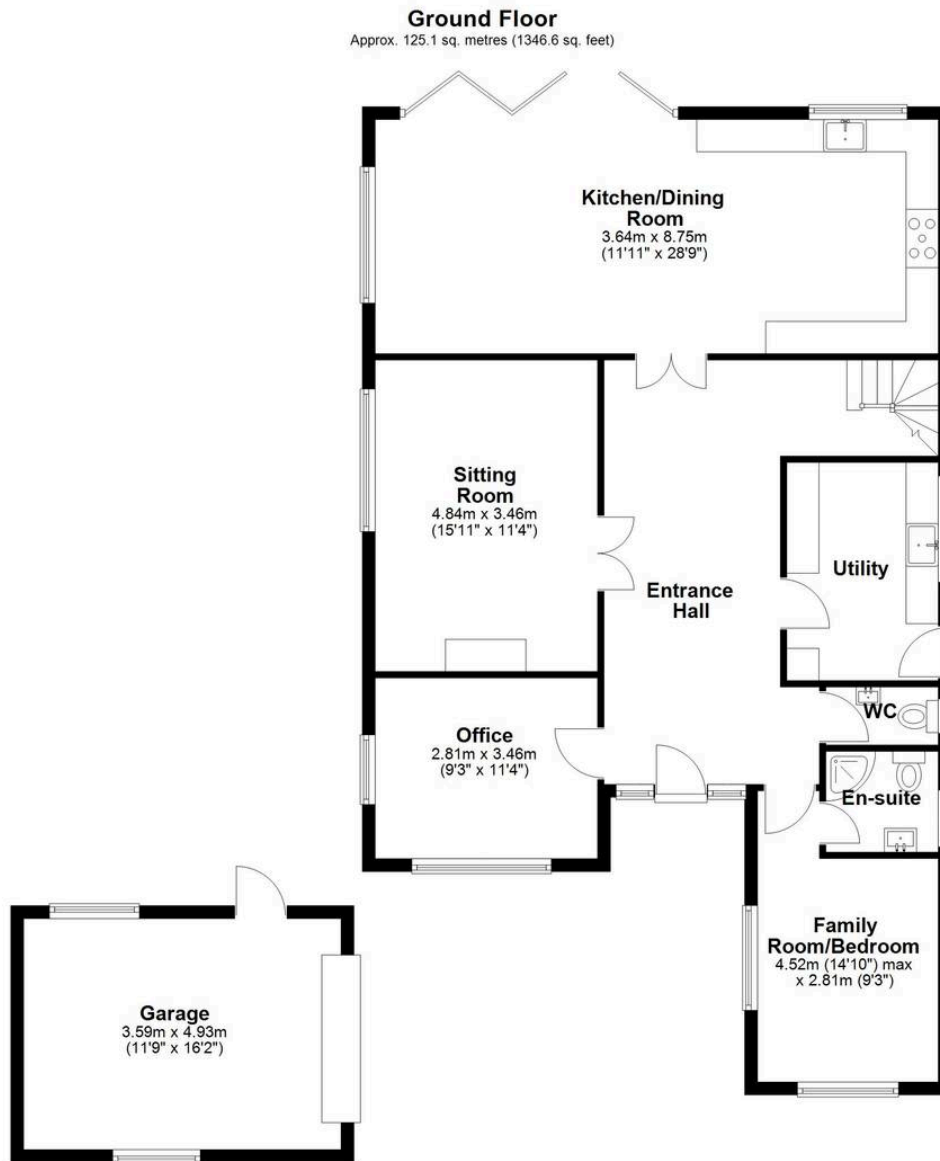
EPC Environmental Impact Rating: F

- Stylish Detached Family Home
- Four Double Bedrooms and Three/Four Reception Rooms
- Including Stunning Open Plan Kitchen/Diner
- Three Modern Bathrooms
- Generous Plot With Private Mature Rear Garden
- Gated Driveway and Detached Garage









Total area: approx. 191.4 sq. metres (2059.9 sq. feet)

Waymark Property Limited

Waymark Ltd, 2 Cornmarket – SN7 7HG

01367 820 070 • faringdon@waymarkproperty.co.uk • www.waymarkproperty.co.uk

Important Notice: These particulars have been prepared for prospective purchasers for guidance only. They do not form part of an offer or contract. Whilst some descriptions are obviously subjective and information is given in good faith, they should not be relied upon as statements or representative of fact. Floorplan – This plan is for illustrative purposes only.