



60 Gilling Road, Richmond, North Yorkshire, DL10 5AN  
Asking price £375,000



## 60 Gilling Road, Richmond, North Yorkshire, DL10 5AN

\*\*\* NEW PRICE \*\*\* A LARGE 4/5 BEDROOM, 2 BATH/SHOWER ROOM & 3 RECEPTION ROOM Semi-detached Home in this HIGHLY SOUGHT-AFTER AREA. Ideal for a LARGE FAMILY, HOME-OFFICE(S), TEENAGER SPACE etc., & with Large SOUTH FACING GARDENS – Highly Recommended.

Situated on the edge of the beautiful Yorkshire Dales National Park, historic Richmond is described by The Rough Guide to Britain as 'an absolute gem'. There is excellent A1(M) & A66 access at Scotch Corner (About 4 miles) & mainline rail station at Darlington 14 miles - LONDON Kings Cross 2 hours 20 minutes.

### RECEPTION HALL

Staircase to first floor.

### WASHROOM/WC

Washbasin & WC.

### KITCHEN/BREAKFAST & DINING ROOM 6.42m x 4.08m overall max (21'0" x 13'4" overall max)

Comprising:

#### KITCHEN/BREAKFAST ROOM 4.08m x 3.13m (13'4" x 10'3")

Fitted with a range of wall & floor units with worktops & inset 1 & ½ bowl ceramic sink, space for range cooker & integrated dishwasher. Tiled floor & down-lighting. UPVC double-glazed windows to front & rear, door to UTILITY & open to:

#### DINING ROOM 3.00m x 2.45m (9'10" x 8'0")

Oak flooring & UPVC double-glazed doors to:

#### Vaulted GARDEN ROOM (Views) 3.60m x 2.67m (11'9" x 8'9")

A great 'extra' vaulted room with light, power & vertical radiator. UPVC double-glazed side & rear windows overlooking the gardens & UPVC double-glazed doors to outside.

#### UTILITY ROOM 2.07m x 1.85m (6'9" x 6'0")

Fitted cupboards with worktop, Belfast sink & plumbing for washing machine. UPVC double-glazed window to front.

#### SITTING ROOM (Views) 4.60m x 3.98m (into bay) (15'1" x 13'0" (into bay))

A south facing deep room with fireplace & woodstove, 'Karndean' flooring & UPVC double-glazed bay window overlooking the gardens.

#### Double BEDROOM 5/OFFICE etc. 3.45m x 2.86m (11'3" x 9'4")

Plus WALK-IN STORE & built-in cupboard. Down-lighting, Baxi gas boiler & UPVC double-glazed window to side.

#### EN SUITE SHOWER ROOM 1.98m x 1.18m (6'5" x 3'10")

Shower cubicle, washbasin & WC.

### FIRST FLOOR LANDING

Built-in store cupboard & hatch to Loft Area.

#### Double BEDROOM 1 (Views) 3.67m x 3.67m (12'0" x 12'0")

Oak finish flooring & UPVC double-glazed side & rear windows overlooking the gardens & beyond.

#### Double BEDROOM 2 (Views) 3.51m x 3.37m (11'6" x 11'0")

Including fitted wardrobes. Oak finish flooring & UPVC double-glazed rear window overlooking the gardens & beyond.

#### Double BEDROOM 3. 2.65m x 2.44m (8'8" x 8'0")

Oak finish flooring & UPVC double-glazed window to front.

#### Double BEDROOM 4. 2.98m max x 2.53m (9'9" max x 8'3")

Plus useful full-width store cupboard. Double-glazed Velux & UPVC double-glazed window to side.

#### 'House' BATH/SHOWER ROOM 2.04m x 1.65m (6'8" x 5'4")

Panelled bath with shower-bar over, washbasin & WC. UPVC double-glazed window to front.

### OUTSIDE FRONT

Stone boundary wall & concrete 3-car hard-standing. Flower/shrub bed & side gate to:

### Large Enclosed SOUTH REAR GARDEN

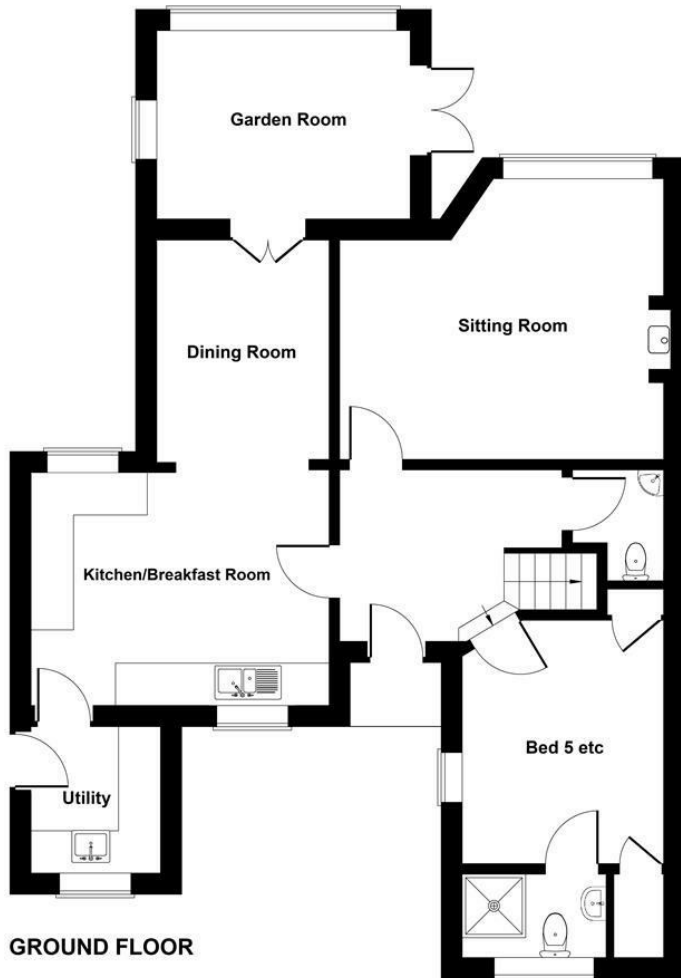
A large, mature garden with lawn with established flower/shrub borders, flagged patio area & shale sitting area - A real haven ideal for those Al Fresco days & evenings.

### NOTES

- (1) Freehold
- (2) Council Tax Band: D
- (3) EPC: TBC
- (4) Gas Central Heating & Double-glazing
- (5) Mains Water, Electricity, Gas & Drainage

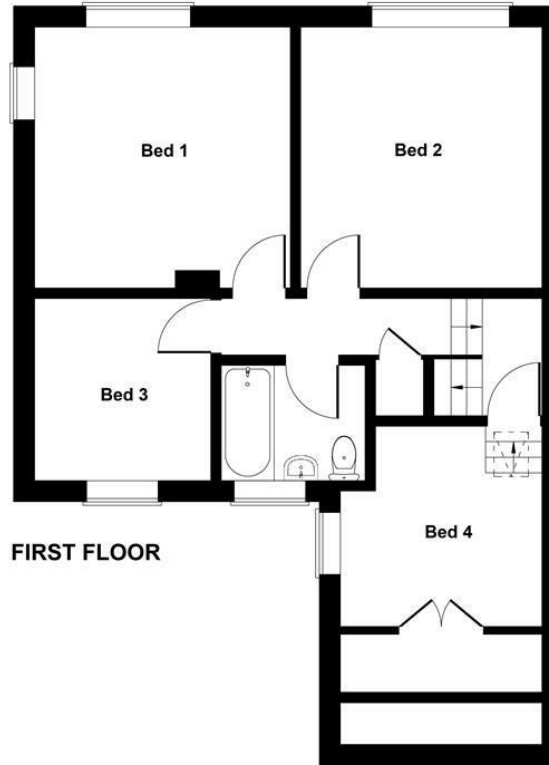


**ASKING PRICE £375,000**



GROUND FLOOR

SKETCH PLAN FOR ILLUSTRATIVE PURPOSES ONLY  
 All measurements walls, doors, windows, fittings and appliances, their sizes and locations, are approximate only. They cannot be regarded as being a representation by the seller, nor their agent.  
 Produced by Potterplans Ltd. 2025



FIRST FLOOR

### Energy Efficiency Rating

	Current	Potential
Very energy efficient - lower running costs		
(92 plus) <b>A</b>		
(81-91) <b>B</b>		
(69-80) <b>C</b>		
(55-68) <b>D</b>		
(39-54) <b>E</b>		
(21-38) <b>F</b>		
(1-20) <b>G</b>		
Not energy efficient - higher running costs		

66 74

England & Wales

EU Directive 2002/91/EC



### Environmental Impact (CO<sub>2</sub>) Rating

	Current	Potential
Very environmentally friendly - lower CO <sub>2</sub> emissions		
(92 plus) <b>A</b>		
(81-91) <b>B</b>		
(69-80) <b>C</b>		
(55-68) <b>D</b>		
(39-54) <b>E</b>		
(21-38) <b>F</b>		
(1-20) <b>G</b>		
Not environmentally friendly - higher CO <sub>2</sub> emissions		

England & Wales

EU Directive 2002/91/EC



