



**Connells**

Denbigh Close  
Hemel Hempstead





### Property Description

Three bedroom end of terrace family home in a sought-after location. Benefits include DRIVEWAY and GARAGE, spacious bedrooms, ENSUITE to the master bedroom, separate lounge and dining room, fitted kitchen and delightful rear garden. With easy access to the Town Centre, the M1 and the Station with services to London Euston. Call now to view!

### Entrance Hall

Door to front, radiator.

### Lounge

Double glazed window, radiator, TV point.

### Dining Room

Double glazed patio doors, radiator, cupboard.

### Kitchen

Fitted with wall and base units with work surfaces to compliment, sink/drainer with splashbacks, integrated oven and hob, integrated fridge/freezer, plumbing for washing machine, radiator, double glazed window and double glazed door.



## Landing

Airing cupboard and access to loft.

## Bedroom 1

Double glazed window, radiator, two cupboards, fitted wardrobes.

## Ensuite

Double glazed window, radiator, wash hand basin, WC, shower cubicle.

## Bedroom 2

Double glazed window, radiator.

## Bedroom 3

Double glazed window, radiator.

## Bathroom

Double glazed window, radiator, WC, wash hand basin, bath with mixer taps, part tiling.

## Parking

Driveway to the front and garage with up and over doors.



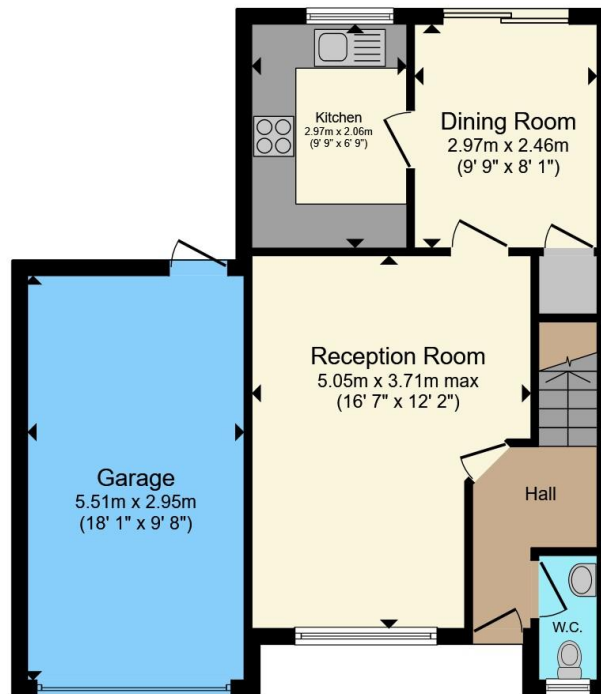




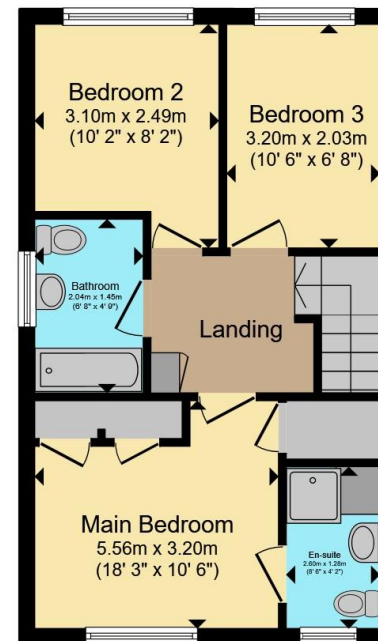








**Ground Floor**



**First Floor**

Total floor area 94.7 m<sup>2</sup> (1,019 sq.ft.) approx

This floor plan is for illustrative purposes only. It is not drawn to scale. Any measurements, floor areas (including any total floor area), openings and orientation are approximate. No details are guaranteed, they cannot be relied upon for any purpose and they do not form part of any agreement. No liability is taken for any error, omission or misstatement. A party must rely upon its own inspection(s). Powered by [www.propertybox.io](http://www.propertybox.io)

**Connells**

To view this property please contact Connells on

**T 01442 216 633**

**E [hemelhempstead@connells.co.uk](mailto:hemelhempstead@connells.co.uk)**

45 Marlowes  
HEMEL HEMPSTEAD HP1 1LD

EPC Rating: D Council Tax  
Band: E

Tenure: Freehold

**view this property online [connells.co.uk/Property/HEM312559](http://connells.co.uk/Property/HEM312559)**



1. MONEY LAUNDERING REGULATIONS Intending purchasers will be asked to produce identification documentation at a later stage and we would ask for your co-operation in order that there will be no delay in agreeing the sale. 2. These particulars do not constitute part or all of an offer or contract. 3. The measurements indicated are supplied for guidance only and as such must be considered incorrect. Potential buyers are advised to recheck measurements before committing to any expense. 4. We have not tested any apparatus, equipment, fixtures, fittings or services and it is in the buyers interest to check the working condition of any appliances.

Connells Residential is registered in England and Wales under company number 1489613, Registered Office is Cumbria House, 16-20 Hockliffe Street, Leighton Buzzard, Bedfordshire, LU7 1GN. VAT Registration Number is 500 2481 05.

**See all our properties at [www.connells.co.uk](http://www.connells.co.uk) | [www.rightmove.co.uk](http://www.rightmove.co.uk) | [www.zoopla.co.uk](http://www.zoopla.co.uk)**

Property Ref: HEM312559 - 0006