

Metcalf Court, SE10

£550,000

A stunning bright and spacious three bedroom apartment located in the very popular Greenwich Millennium Village. The apartment consists of three good-size bedrooms with one benefitting from an en-suite bathroom as well as having a separate guest bathroom, the flat also has open plan living area and private outside space.

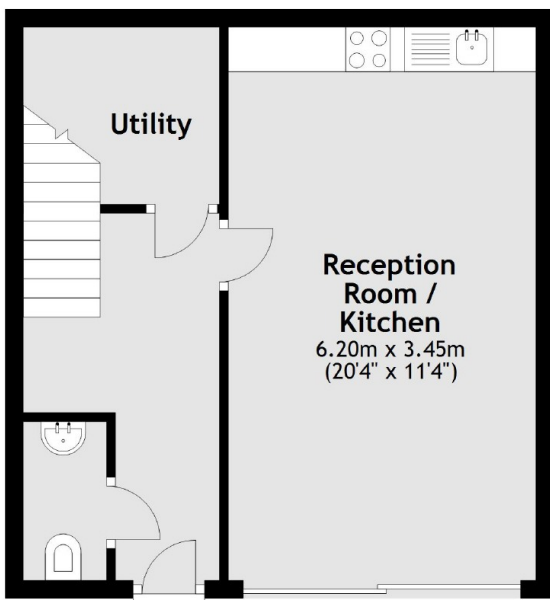
Easy access by a short walk from North Greenwich station and the local shopping complex ensures all amenities are nearby. Energy rating B.

Features

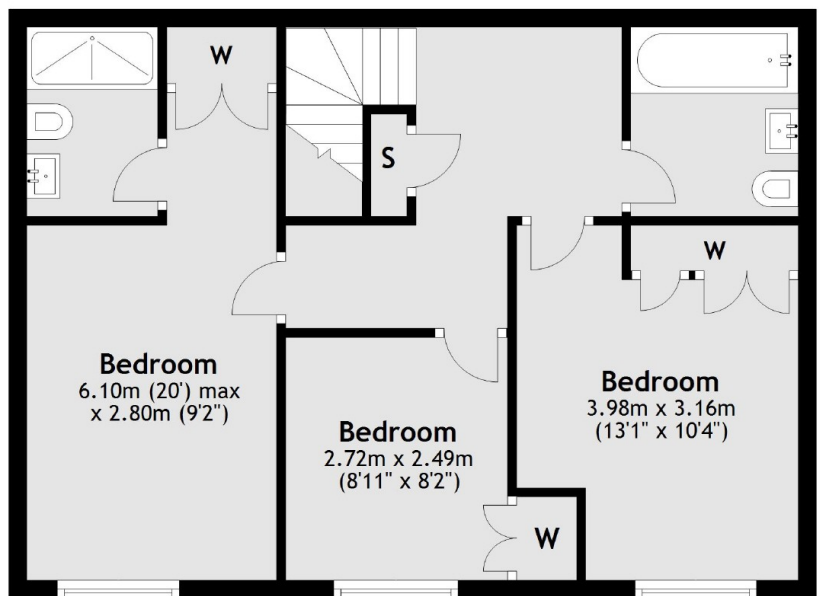
- Three Bedrooms
- Two Bathrooms
- Private Outside Space
- Allocated Parking
- Split Level
- Open Plan

Teal Street, London, SE10

Ground Floor



First Floor



Total area: approx. 89.3 sq. metres (961.2 sq. feet)

Contact

To arrange a viewing call our office on the number below or visit our website.



Energy Rating: B. We aim to make our particulars both accurate and reliable. However they are not guaranteed; nor do they form part of an offer or contract. If you require clarification on any points then please contact us, especially if you're traveling some distance to view. Please note that appliances and heating systems have not been tested and therefore no warranties can be given as to their good working order.