



Tyrrells Hall Close, Little Thurrock

Offers Over £400,000



- Well presented three bedroom semi-detached family home, situated in a quiet and highly desirable cul-de-sac location in Tyrrells Hall Close, Grays
- Spacious and well-balanced accommodation throughout, ideal for modern family living
- Welcoming entrance porch leading into a bright hallway, creating a practical and inviting first impression
- Generous lounge offering a comfortable and versatile living space, perfect for both relaxing and entertaining
- Impressive kitchen/diner with integrated appliances and ample space for dining, forming the heart of the home
- Three well-proportioned bedrooms, suitable for families, guests or home working arrangements
- Modern family bathroom finished in a contemporary style with quality fittings
- Good size rear garden, ideal for outdoor entertaining, family use or simply enjoying some private outdoor space
- Versatile summerhouse in the garden, perfect for use as a home office, studio or relaxation space
- Driveway parking to the front and the added benefit of a recently installed Ideal combi boiler (circa 2023), serviced annually for efficiency and peace of mind



A well presented and impressively proportioned three bedroom semi-detached family home, tucked away in a highly desirable cul-de-sac in Tyrrells Hall Close, Grays — the kind of location where things feel a little quieter, yet everything you need is still within easy reach.

This is a home that gets the balance right. Step through the entrance porch into a welcoming hallway and you'll immediately notice the sense of space on offer. The lounge is a great size, perfect for everything from relaxed evenings to hosting friends without feeling on top of each other.

To the rear, the kitchen/diner really earns its keep. Well laid out with integrated appliances and plenty of room for a proper dining setup, it's a space that naturally becomes the hub of the home — whether that's weeknight dinners, weekend catch-ups or the occasional attempt at being a bit too ambitious in the kitchen.

Upstairs, you'll find three well-proportioned bedrooms and a modern family bathroom, offering comfortable accommodation for families, guests or even that long-promised home office.

Outside, the property continues to deliver. The rear garden is a nice size and comes complete with a summerhouse — ideal for working from home, a hobby space, or simply somewhere to escape with a bit of peace and quiet. To the front, driveway parking keeps things practical.

The current owner has also invested in a new Ideal combi boiler (installed circa 2023 and serviced annually), so the essentials are already taken care of.

Spacious, well located and ready to enjoy, this is a home that quietly ticks all the boxes without needing to shout about it — although it probably could if it wanted to.

AREA GUIDE

Tyrrells Hall Close is located within a popular residential area of Grays, offering a peaceful cul-de-sac setting that is particularly appealing for families and those seeking a quieter lifestyle without compromising on convenience.

The property is well positioned for access to local shops, schools and everyday amenities, while Grays railway station provides regular services into London Fenchurch Street, making it a practical choice for commuters. Road users also benefit from easy access to the A13 and M25, connecting you to London and surrounding areas.

For shopping and leisure, Lakeside Shopping Centre is just a short drive away, offering an extensive range of retail outlets, restaurants and entertainment options.

The area also benefits from nearby parks and green spaces, providing opportunities for outdoor activities and family time, while maintaining a strong sense of community.

Overall, Tyrrells Hall Close offers a well-connected yet peaceful setting, making it a consistently popular choice for buyers looking for both convenience and a more relaxed pace of living.



THE SMALL PRINT:

Material Information: <https://reports.sprift.com/property-report/16-tyrrells-hall-close-grays-rm17-6hb/5245347>

We've done our homework, but we aren't fortune tellers. We haven't poked the boiler, flicked the switches, or tested every light bulb. Nothing here counts as a contract or statement of fact—get your solicitor to check all the serious stuff, like tenure, parking, planning permission, building regs, and all that jazz!

Measurements? Guides only. Floorplans? Handy, but not perfectly to scale. Travelling far? Call first—clarification is free, petrol is not.

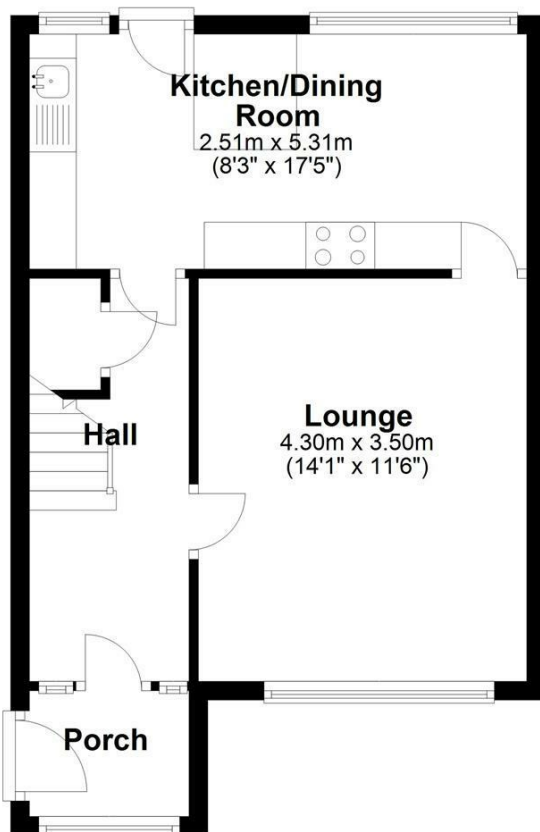
We may receive a referral fee if you choose to use third-party services we recommend, such as conveyancers, mortgage advisers, or EPC providers, but you are under no obligation to do so.

AML Checks - Law says we must run one. £96 including VAT per buyer. Tiny toll, big compliance.

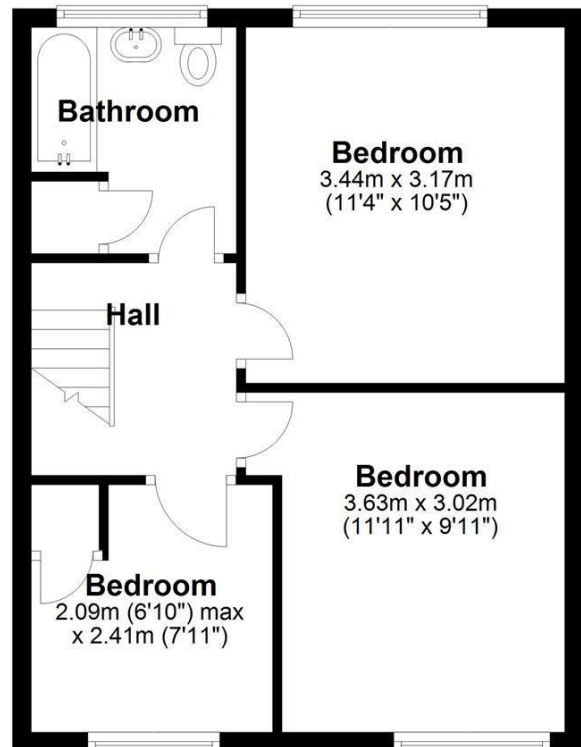
Buyer Reservation Fee - Offer accepted? Pay a reservation fee (min £1,000) to lock it in. VIP pass to the property, protects against gazumping. Complete the sale? Fee refunded. Things go sideways? Sometimes non-refundable. Head to our website for full details – or skip the scrolling and just call.



Ground Floor



First Floor





Colubrid.co.uk