

**OVER 60?**

Secure this property  
for up to **59% less!**



**Guide Price**

**£600,000**

**Freehold**

4x  2x  1x 

Lenham Road, Headcorn, Maidstone, Kent,

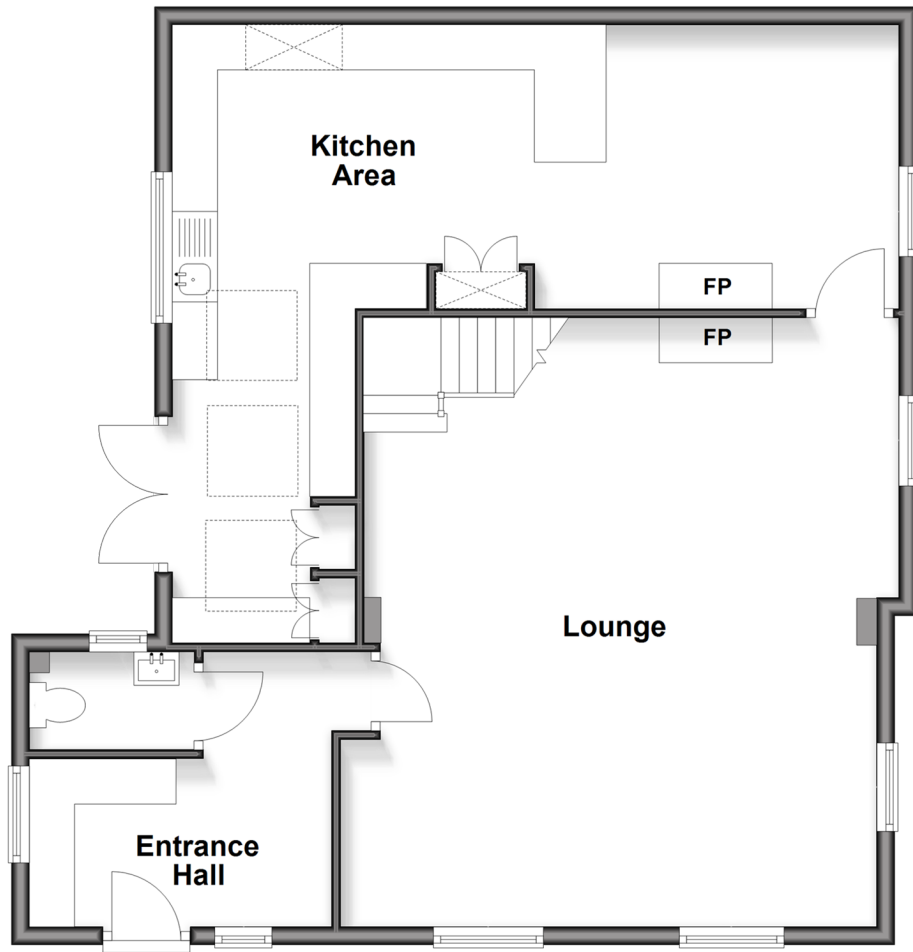
TN27

*Wards*

Helping you move forwards

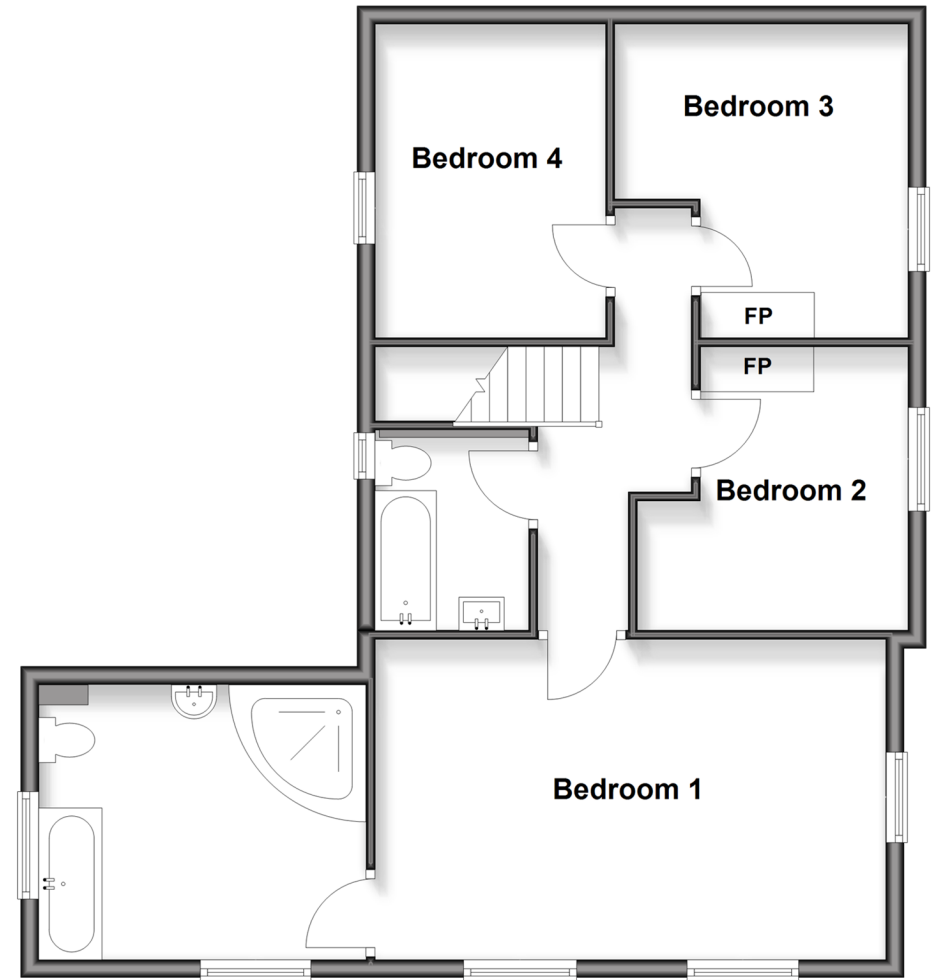
## Ground Floor

Approx. 84.1 sq. metres (905.7 sq. feet)



## First Floor

Approx. 71.5 sq. metres (769.7 sq. feet)



## Accommodation

### GROUND FLOOR

Entrance Hall

Cloakroom

Lounge: 22'0 x 18'4 (6.71m x 5.59m)

Kitchen Area: (L-shaped) 25'9 x 12'10 (7.85m x 3.91m) plus 9'9 x 6'8 (2.97m x 2.03m)

### FIRST FLOOR

Landing

Bedroom 1: 20'3 x 10'1 (6.18m x 3.08m)

En-suite Bathroom

Bedroom 2: 11'0 x 5'4 (3.36m x 1.63m)

Bedroom 3: 11'0 x 9'10 (3.36m x 3.00m)

Bedroom 4: 11'0 x 8'0 (3.36m x 2.44m)

Bathroom

### OUTSIDE

Driveway

Front and Rear Gardens

Summer House

Seating Area

Outbuilding



## Main features

- Full of character with a modern twist
- Updated open plan kitchen/diner with fully integrated goods
- Cosy yet spacious lounge with log burner
- Beautifully landscaped gardens set on a ¼ acre plot, outdoor kitchen area and multiple patio spaces with views over fields
- Copious parking with the large, sweeping driveway

## Nearest Schools

Primary Schools: Headcorn Primary 0.8 miles, Ulcombe C of E Primary 2.4 miles, Smarden Primary 2.9 miles  
Secondary Schools: Sutton Valence School 3.3 miles, Swadelands School 5.4 miles, Heath Farm School 5.5 miles

## Transport Information

Train Stations: Headcorn 0.7 miles, Staplehurst 3.8 miles, Pluckley 4.8 miles

## Address

Lenham Road, Headcorn, Maidstone, Kent, TN27

## Directions

For directions to this property please contact us.



*Wards*  
Helping you move forwards

Call Headcorn Branch 01622 890435 ■ [wardsofkent.co.uk](http://wardsofkent.co.uk)



- Legal advice should be taken to verify fixtures/fittings, planning, alterations and/or lease details
- Appliances & services are untested, dimensions are approximate and floor plans are not to scale
- Through a Homewise Home For Life Plan people aged 60+ can secure this property for up to 59% less, by purchasing a Lifetime Lease

EPC RATING

CURRENT: D(61) POTENTIAL: C(73)

12722170/20260124/DB/HS1