



Redwood Drive

£329,950



 4  2  2

EPC rating: U

- Stunning four bedroom detached
- Gas central heating
- Excellent motorway links
- Close to amenities
- Double Glazing
- Only a short drive to Lytham



Email
nicola@ashburnlindsay.co.uk

Phone
01253206800

Description

Welcome to Redwood Drive!

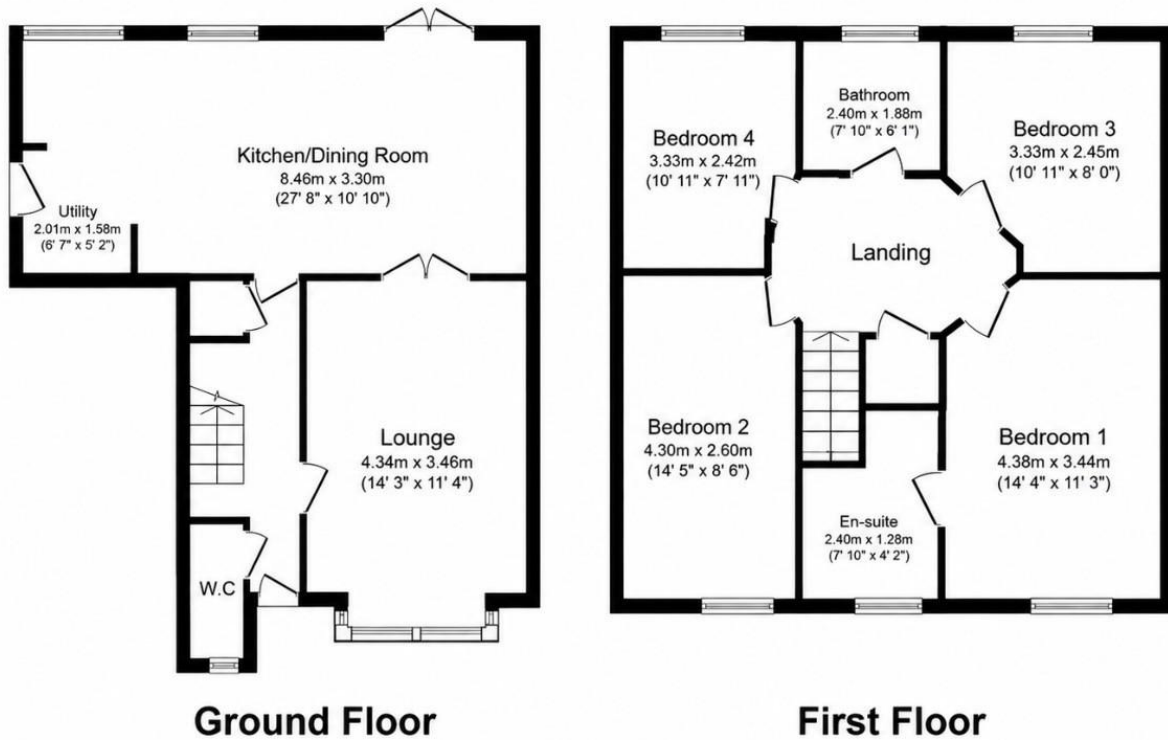
Tucked in a sought after location close to the motorway link (M55), Lytham, and all local amenities, this stunning four-bedroom detached family home offers both convenience and comfort. A welcoming hallway leads to a cosy lounge perfect for relaxing evenings and a spacious dining kitchen, ideal for families! There is also a fabulous utility room.

At the rear, a beautifully maintained, low maintenance garden provides a tranquil escape. Upstairs, you'll find four generously sized bedrooms, including the main bedroom with its own ensuite bathroom. A family bathroom serves the other three bedrooms, while a downstairs toilet and built in storage add everyday practicality. The property also boasts a driveway, an attached garage, and a prime setting that is perfect for growing families seeking a perfect balance of space and convenience.

EPC Rated TBC. Council Tax Band E.

Floorplan

Floor Plan



Rooms

Hallway

Lounge

4.34m x 4.34m (14'2" x 14'2")

Dining Kitchen

8.46m x 3.46m (27'10" x 11'5")

Utility

2.01m x 1.69m (6'7" x 5'6")

Ground floor WC

FIRST FLOOR

Bedroom One

4.38m x 3.48m (14'5" x 11'5")

Bedroom Two

4.39m x 2.6m (14'5" x 8'6")

Bedroom Three

3.33m x 2.45m (10'11" x 8'0")

Bedroom Four

3.33m x 2.42m (10'11" x 7'11")

Bathroom

En suite

Garage

Photographs



