



**Crispin Cottage, Stack Lane, Hartley,
Longfield, Kent DA3 8BL**

Offers Over
£750,000

Council Tax Band: F

Tenure: Freehold

Property Type: Detached House

Bedrooms: 4 | **Bathrooms:** 2 | **Receptions:** 2

Stack Lane, Hartley, Longfield, Kent

Located within a highly regarded private road in Hartley, this well presented home offers spacious accommodation and a thoughtfully extended layout. The property has been maintained to a high standard and provides a welcoming approach from the driveway.

The entrance hall features a contemporary wooden staircase leading to the first floor, with a ground floor shower room and useful storage areas. To the rear, the property has been extended to create an impressive open plan living / dining / kitchen space. The kitchen is finished in a neutral taupe palette with quartz worksurfaces, open shelving and generous storage. A glazed roof feature and bi-fold doors provide excellent natural light and open onto the landscaped rear garden. A separate utility room adds further convenience.

To the front of the property, a 19ft formal lounge offers a comfortable reception space and includes a bespoke built-in media and storage unit. An additional ground floor room provides flexibility for use as a fourth bedroom, home office or further reception room.

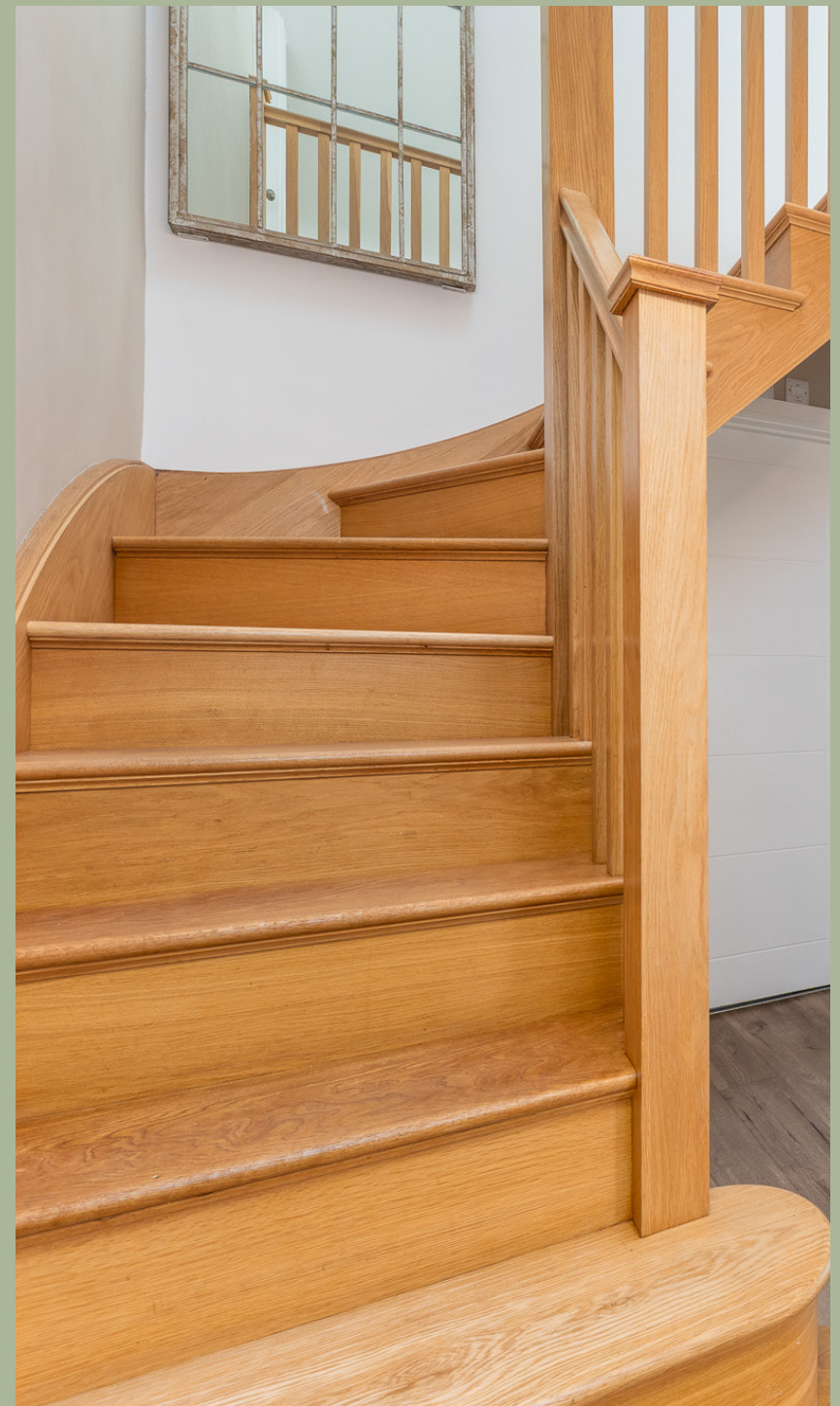
On the first floor the landing leads to three bedrooms and a refitted family bathroom.

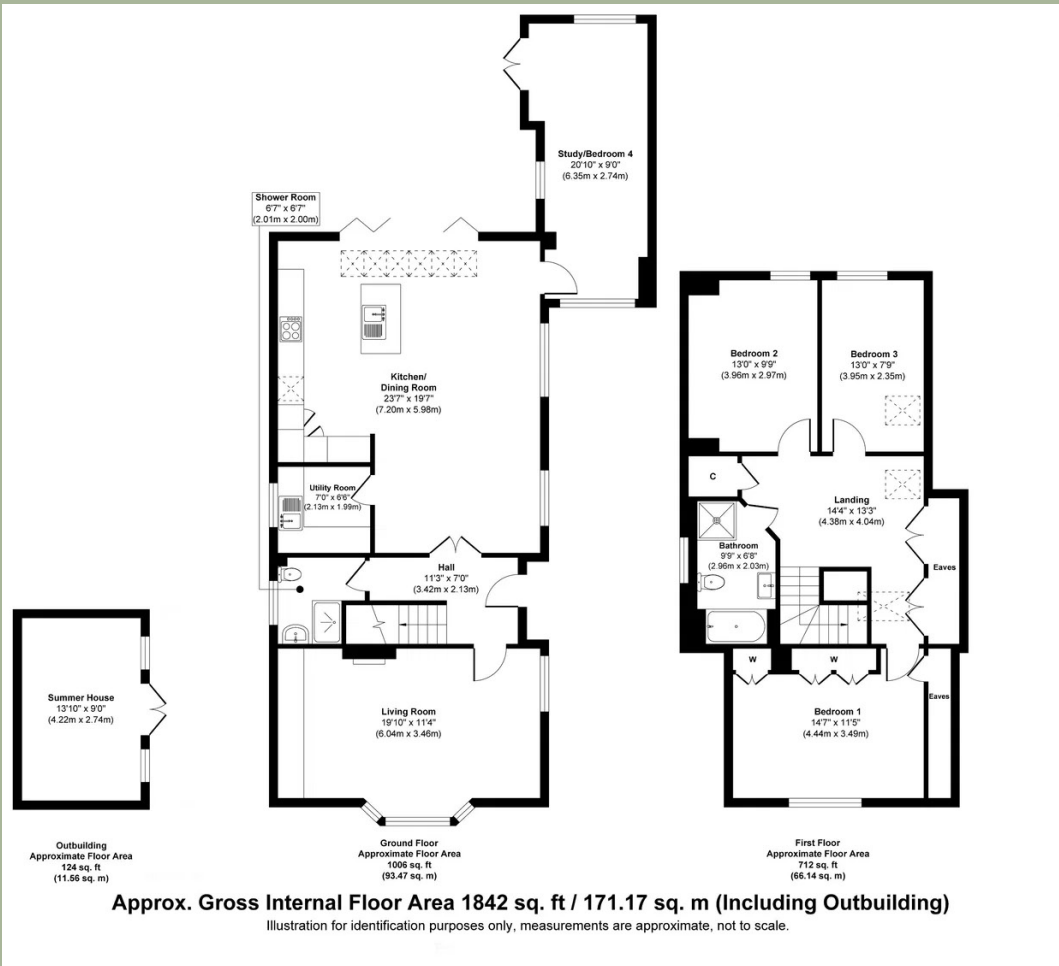
The rear garden has been landscaped to create defined areas for outdoor enjoyment, including a generous patio for entertaining, raised flower beds, and pergola and summer house.

This property offers versatile accommodation in a desirable Hartley location and may appeal to buyers seeking a well maintained home with generous living space.









Dimensions

Living Room
 19'9" x 11'3"

Kitchen/Dining Room
 23'7" x 19'5"

Bedroom Four / Study
 20'9" x 8'10"

Utility Room
 6'6" x 6'

Downstairs Shower
 6'6" x 6'6"

Bedroom One
 14'7" x 11'4"

Bedroom Two
 12'11" x 9'8"

Bedroom Three
 12'11" x 7'8"

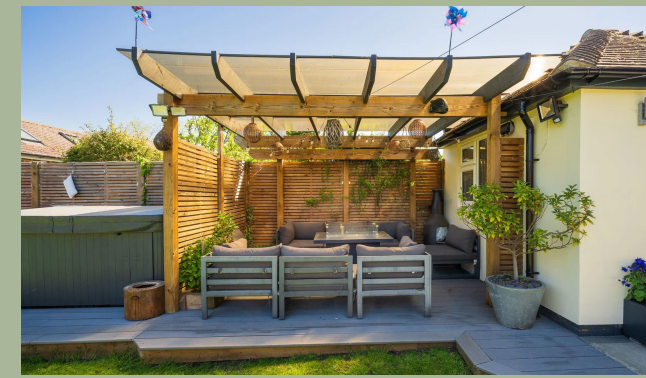
Bathroom
 9'8" x 6'6"

Property ownership information

Tenure: Freehold

Council tax band: F





Hilden & Co Estates Limited

27 Castle Street Canterbury Kent. CT1 2PX, Kent, CT1 2PX

01227 208 990

hello@hildenestates.co.uk

<https://hildenestates.co.uk>

HILDEN
Estates
& CO