



12

Dalmore Crescent, Helensburgh, Argyll And Bute. G84 8JP





12

Dalmore Crescent, Helensburgh, Argyll And Bute. G84 8JP



12 Dalmore Crescent is a fabulous three-bedroom detached villa set within the former grounds of Dalmore House which was designed by renowned architect William Leiper. The location of the development is ideal positioned within a stunning setting on the lower west side of Helensburgh.

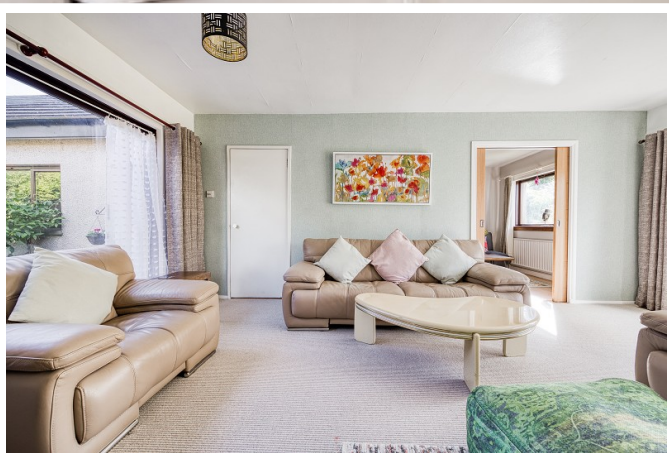
EPC Band D

Council Tax Band F





12  
Dalmore Crescent, Helensburgh, Argyll And Bute. G84 8JP





## Measurements

Hallway	10' 05" Max x 9' 05" Max or 3.18m Max x 2.87m Max
Lounge	19' 02" x 12' 05" Max Max or 5.84m x 3.78m Max
Conservatory	10' 01" x 9' 01" or 3.07m x 2.77m
Dining Room	14' 04" Max x 10' 0" Max or 4.37m Max x 3.05m Max
Kitchen	15' 03" Max x 8' 11" Max or 4.65m Max x 2.72m Max
Bedroom 3	15' 06" x 12' 0" or 4.72m x 3.66m
Shower Room	6' 08" x 5' 07" or 2.03m x 1.70m
Landing	10' 02" Max x 7' 07" Max or 3.10m Max x 2.31m Max
Bedroom 1	14' 04" Max x 12' 06" Max or 4.37m Max x 3.81m Max
Bedroom 2	14' 04" Max x 8' 11" Max or 4.37m Max x 2.72m Max
Bathroom	7' 11" x 5' 11" or 2.41m x 1.80m



All measurements are approximate and for display purposes only

Contact our office for further details



NOTE: These details have been prepared for guidance. If there is any point which you find misleading please contact McArthur Stanton where further information is available. Measurements have been taken from wall to wall, unless otherwise stated, and have been recorded by use of a sonic beam. Services and appliances not tested. Details have been prepared by June 2026. If required, we can arrange for a property market appraisal to be carried out on your existing property.

12

Dalmore Crescent, Helensburgh, Argyll And Bute. G84 8JP

