



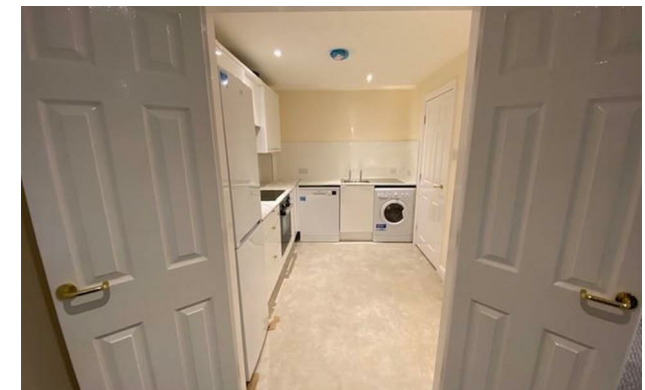
*jordan fishwick*

**WEST DIDSBURY**  
Central Road



# Central Road, West Didsbury, M20 4ZA

£1,395 Per Calendar Month



## The Property

\*\*\* AVAILABLE JUNE \*\*\* Jordan Fishwick are delighted to bring to the market this two bed, two bath, ground floor apartment in West Didsbury. In a fantastic location for Didsbury, Withington and transport links, it is ideally suited to a couple or professional sharers. This lovely property has a recently fitted kitchen with appliances, new carpets throughout and has been fully redecorated in recent years. Both bedrooms are large doubles with fitted wardrobes along with the master housing a shower en-suite. The lounge includes double doors leading into the kitchen, along with patio doors with access to a small, paved area and communal gardens to the rear of the property. The main bathroom is fitted with a three-piece suite, advantages of a shower over the bath also. Unfurnished. Benefits include communal gardens, and the property comes with secure gated parking - one space available only. Please contact our Didsbury office.

View our Virtual Tour Here - <https://youtu.be/mKDSRnQ3o0w>

EPC Rating - D // Council Tax Band B

Notice - Please note we have not tested any apparatus, fixtures, fittings, or services. Interested parties must undertake their own investigation into the working order of these items. All measurements are approximate and photographs provided for guidance only.

## Directions

M20 4ZA



- Available June
- Two Double Bedrooms
- Two Bathrooms
- Unfurnished
- Ideal for Couples or Sharers
- Great Location of West Didsbury
- Walkable to all Transport Links
- One Parking Space Available
- Council Tax Band B
- EPC Rating D

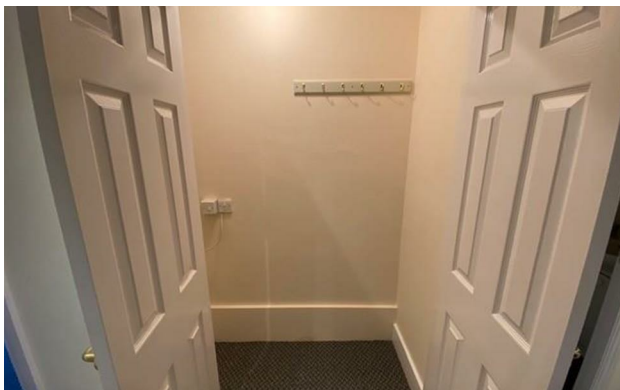
Postcode - M20 4ZA

EPC Rating - D

Floor Area - sq ft

Local Authority - Manchester

Council Tax - B





These particulars are believed to be accurate but they are not guaranteed and do not form a contract. Neither Jordan Fishwick nor the vendor or lessor accept any responsibility in respect of these particulars, which are not intended to be statements or representations of fact and any intending purchaser or lessee must satisfy himself by inspection or otherwise as to the correctness of each of the statements contained in these particulars. Any floorplans on this brochure are for illustrative purposes only and are not necessarily to scale.

Offices also at: Wilmslow, Macclesfield, Hale, Sale, Chorlton, Glossop, Manchester & Salford

757-759 Wilmslow Road, Didsbury Village, Manchester

**0161 445 4480**

[didsbury@jordanfishwick.co.uk](mailto:didsbury@jordanfishwick.co.uk)  
[www.jordanfishwick.co.uk](http://www.jordanfishwick.co.uk)