



Madeley Road, W5

£750,000

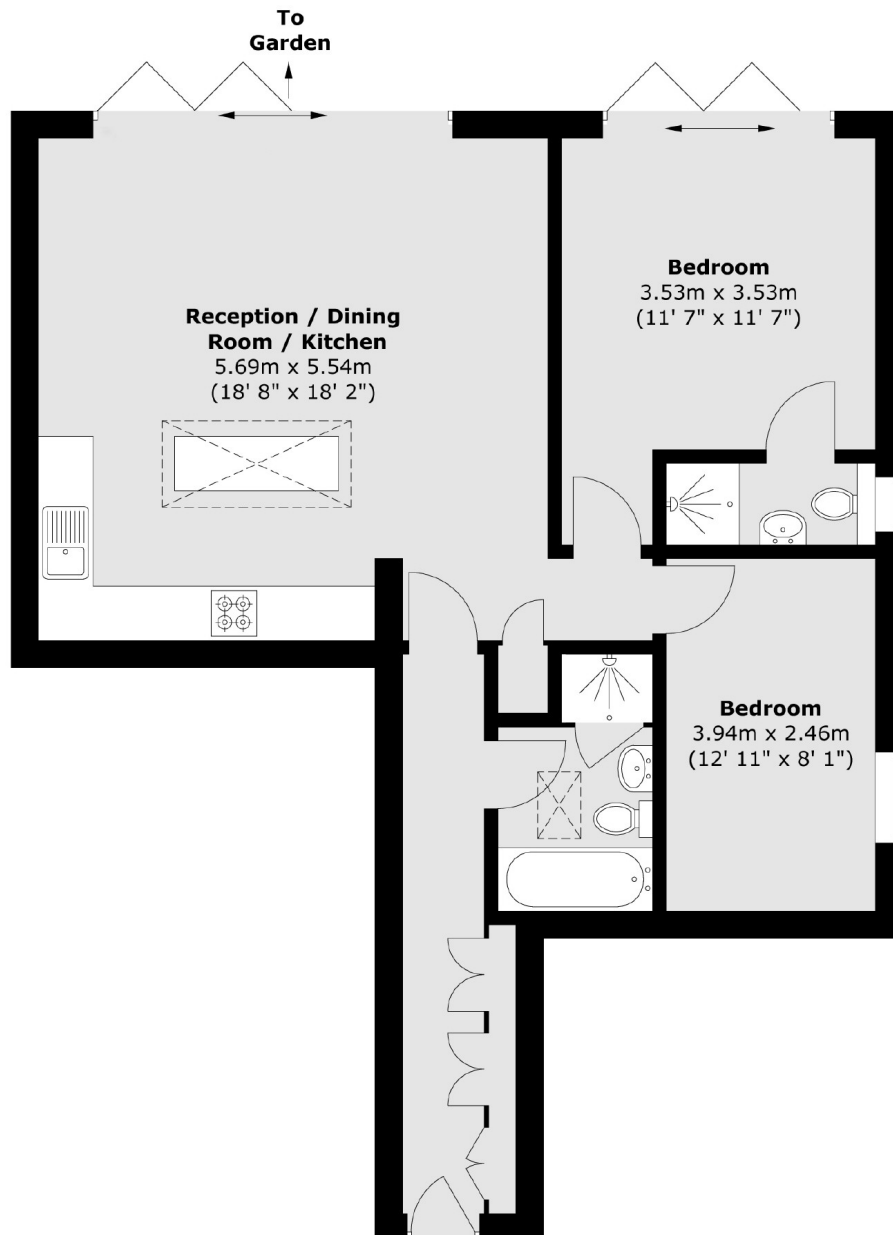
Located within just minutes of Ealing Broadway is this immaculate two bedroom, two bathroom ground floor flat. There is a bright and spacious open-plan living area that seamlessly leads through to your sizable private garden. The property also benefits from a large communal garden and allocated off-street parking.

Located within minutes of Ealing Broadway station with the new Elizabeth line, District and Central lines along with national rail services. All the shops, restaurants and amenities you could need are on your doorstep.

Features

- Two Bedrooms
- Two Bathrooms
- Private Garden
- Allocated Parking
- Close to Transport
- Chain Free

Madeley Road, London, W5



Total area (approx.) : 74.2 sq. m (799 sq. ft)

Dexters

Ealing
2 New Ealing Broadway
London
W5 2NU
Sales
020 8810 0909

Energy Rating: C. We aim to make our particulars both accurate and reliable. However they are not guaranteed; nor do they form part of an offer or contract. If you require clarification on any points then please contact us, especially if you're traveling some distance to view. Please note that appliances and heating systems have not been tested and therefore no warranties can be given as to their good working order.

 **RICS** | Regulated
Estate Agent
and Letting Agent

[dexters.co.uk](https://www.dexters.co.uk)