



Queen Street, Hull  
Hull

Offers in excess of £130,000

 **WIGWAM**

- No chain
- Open plan design
- Central location
- 2nd floor apartment
- Stunning views of the River Humber

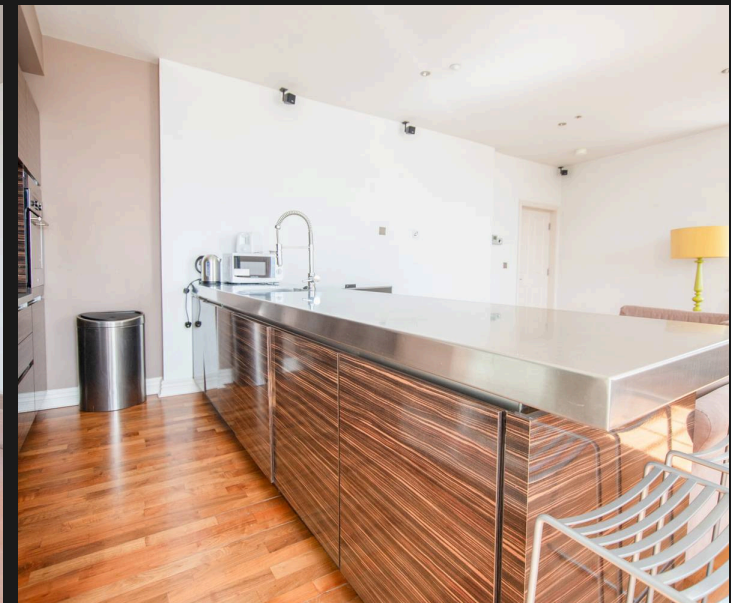
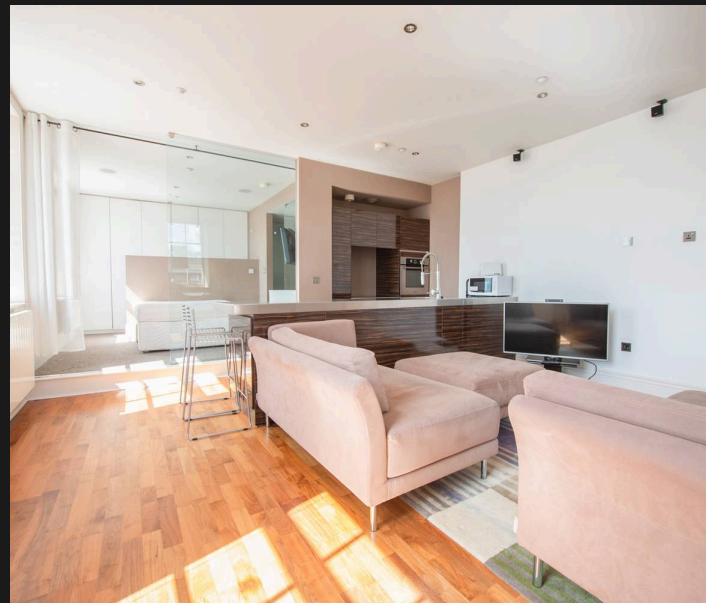
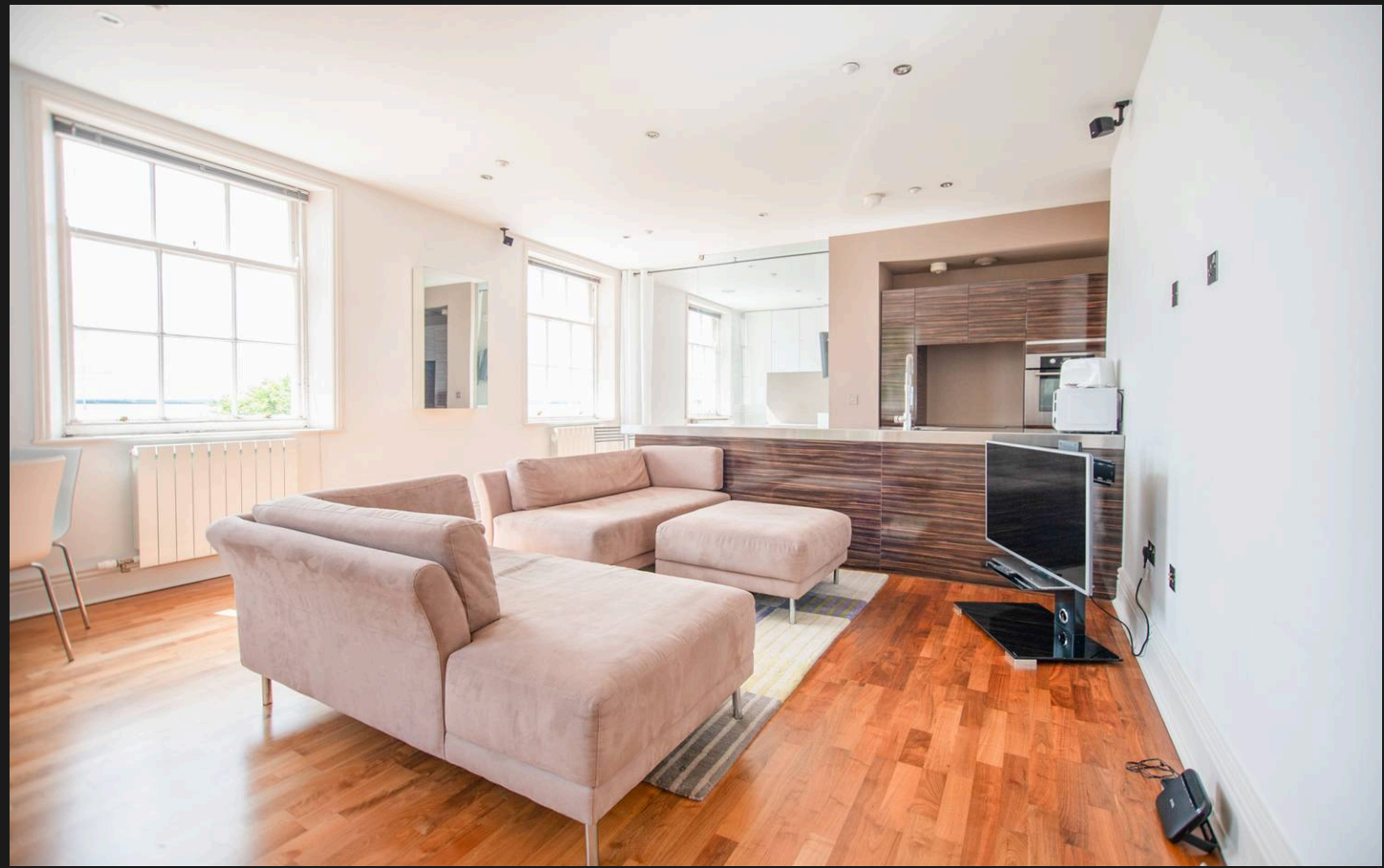
Situated in a prime city centre location, this beautifully presented 1 bedroom apartment exudes a sense of modern charm and sophistication. Upon entering via the sweeping spiral staircase, you are greeted by a stylish open floor plan that seamlessly flows from the living area to the well-equipped modern kitchen, creating the perfect space for both relaxation and entertainment. The high standard of finishes and fixtures throughout the apartment reflects a keen attention to detail and quality.

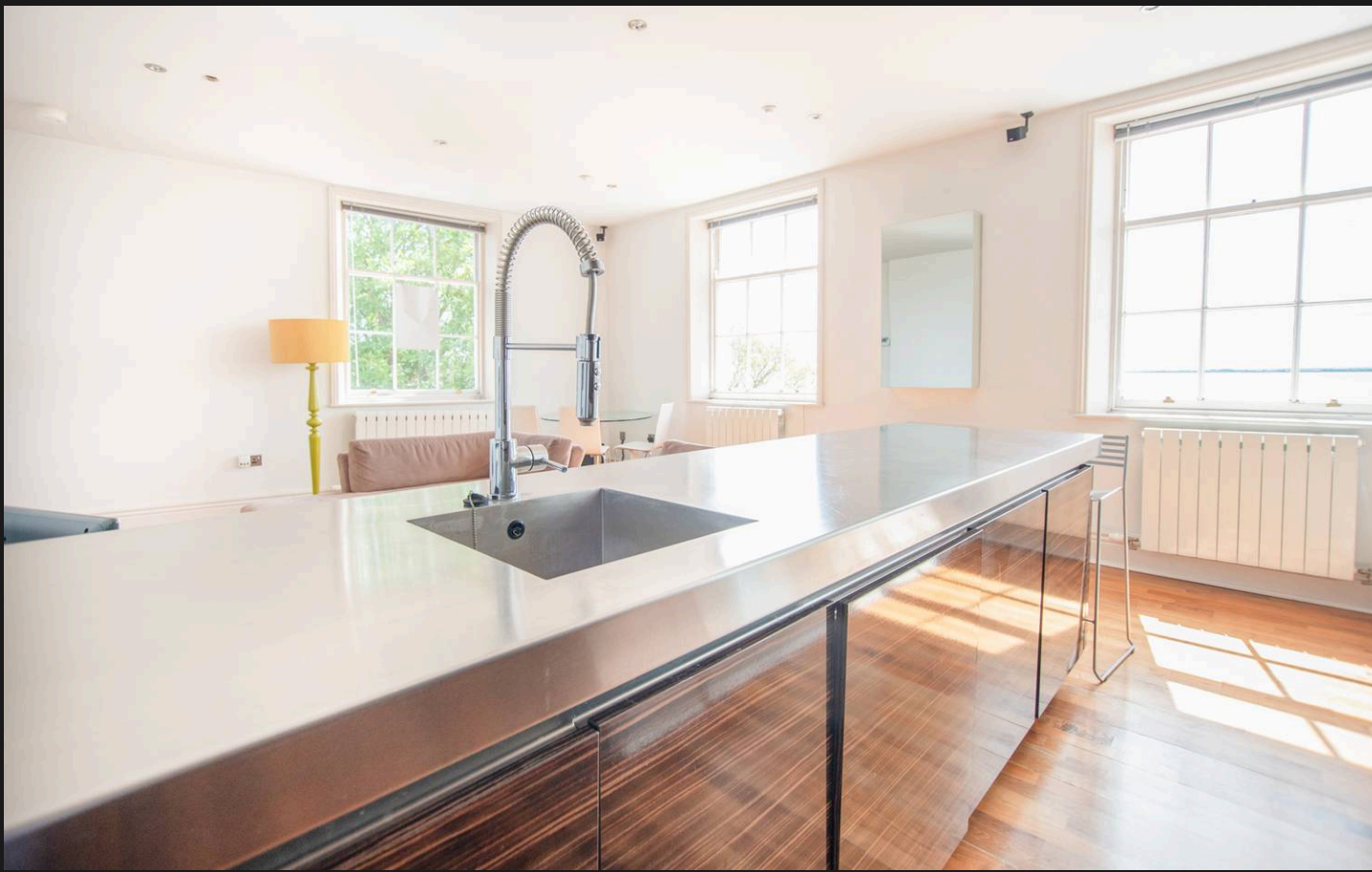
The bedroom offers a tranquil retreat, featuring fitted wardrobes which create ample storage space and benefits from vast natural light that fills the room from the large sash windows. The apartment's contemporary design and neutral colour palette provide a canvas for personalisation to make it truly your own.

Conveniently located within walking distance of a plethora of amenities and local facilities, including the Marina, Hull Bus and Train Station.

This property is ready to move into and enjoy - early viewing is strongly recommended to secure this opportunity to own a stunning apartment.

The property has a service charge of £158.00 per calendar month.





### **Kitchen / Lounge**

16' 8" x 15' 7" (5.07m x 4.76m)

With laminate flooring, radiators, sash windows, sink and tap, integrated oven, induction hob, kitchen island with worktop and units, spot lights.

### **Bedroom**

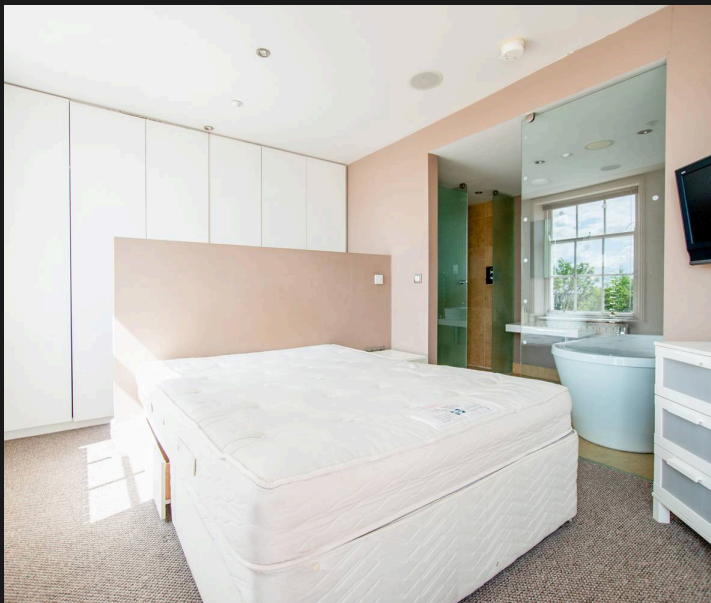
12' 2" x 9' 11" (3.70m x 3.03m)

With carpet, fitted wardrobes, radiator, spot lights and window.

### **Bathroom**

10' 2" x 5' 3" (3.10m x 1.60m)

With tiled floor, free-standing bath with tap, wash basin, walk-in shower with wall-mounted dial and tiled wall with frosted glass part enclosure, and toilet.

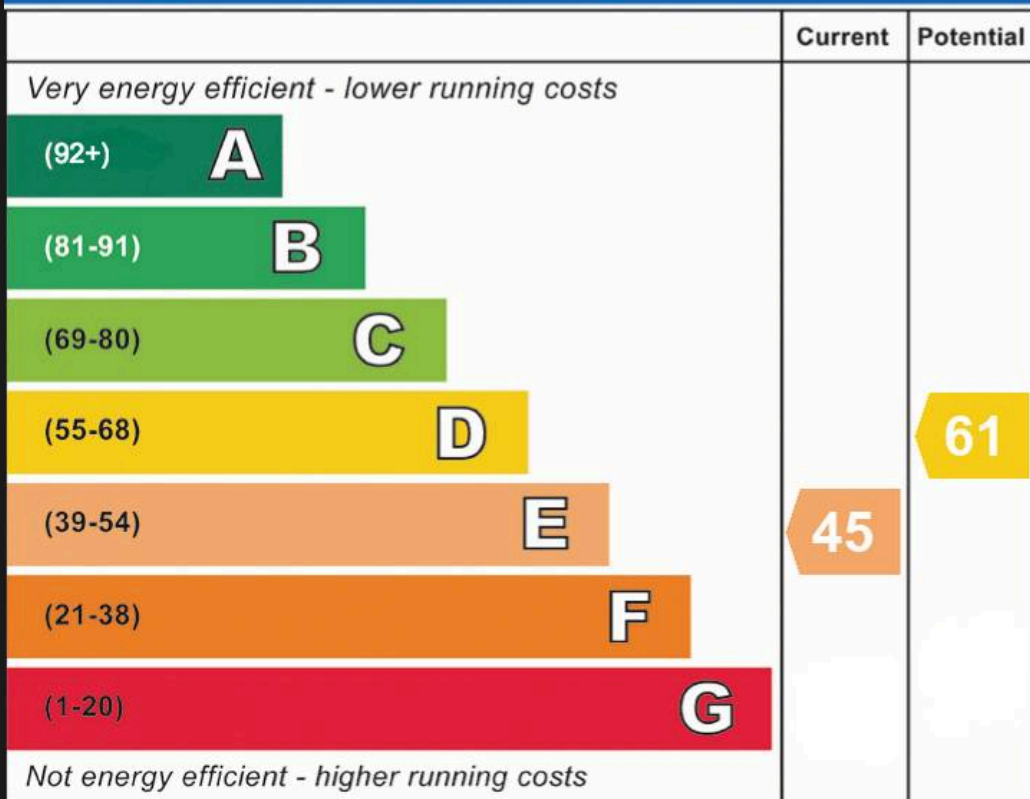






This floor plan is provided without warranty of any kind. All measures have been taken to ensure quality and accuracy, however we disclaim any warranty including, without limitation, satisfactory quality or accuracy of dimensions.

## Energy Efficiency Rating

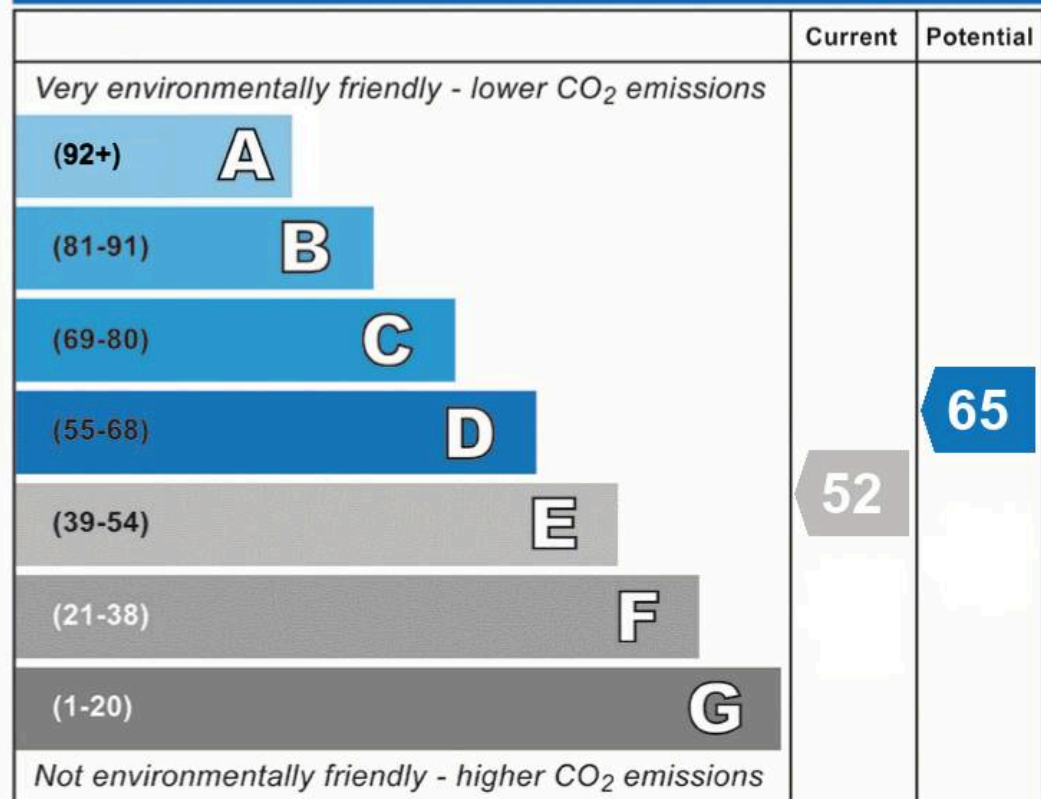


England, Scotland & Wales

EU Directive 2002/91/EC



## Environmental Impact (CO<sub>2</sub>) Rating



England, Scotland & Wales

EU Directive 2002/91/EC



# Wigwam

Block A, Unit 7B, Flemingate, Beverley - HU17 0NQ

01482505152 • hello@wigwamhomes.co.uk • www.wigwamhomes.co.uk