

house.

PARTNERSHIP

Moving estate agency on



COLLINGWOOD HOUSE

Pickhurst Road

Chiddingfold

Godalming GU8 4YD

Nestling in beautiful countryside on the outskirts of Chiddingfold, an imposing family home providing substantial and comfortable living space, set in landscaped gardens with swimming pool

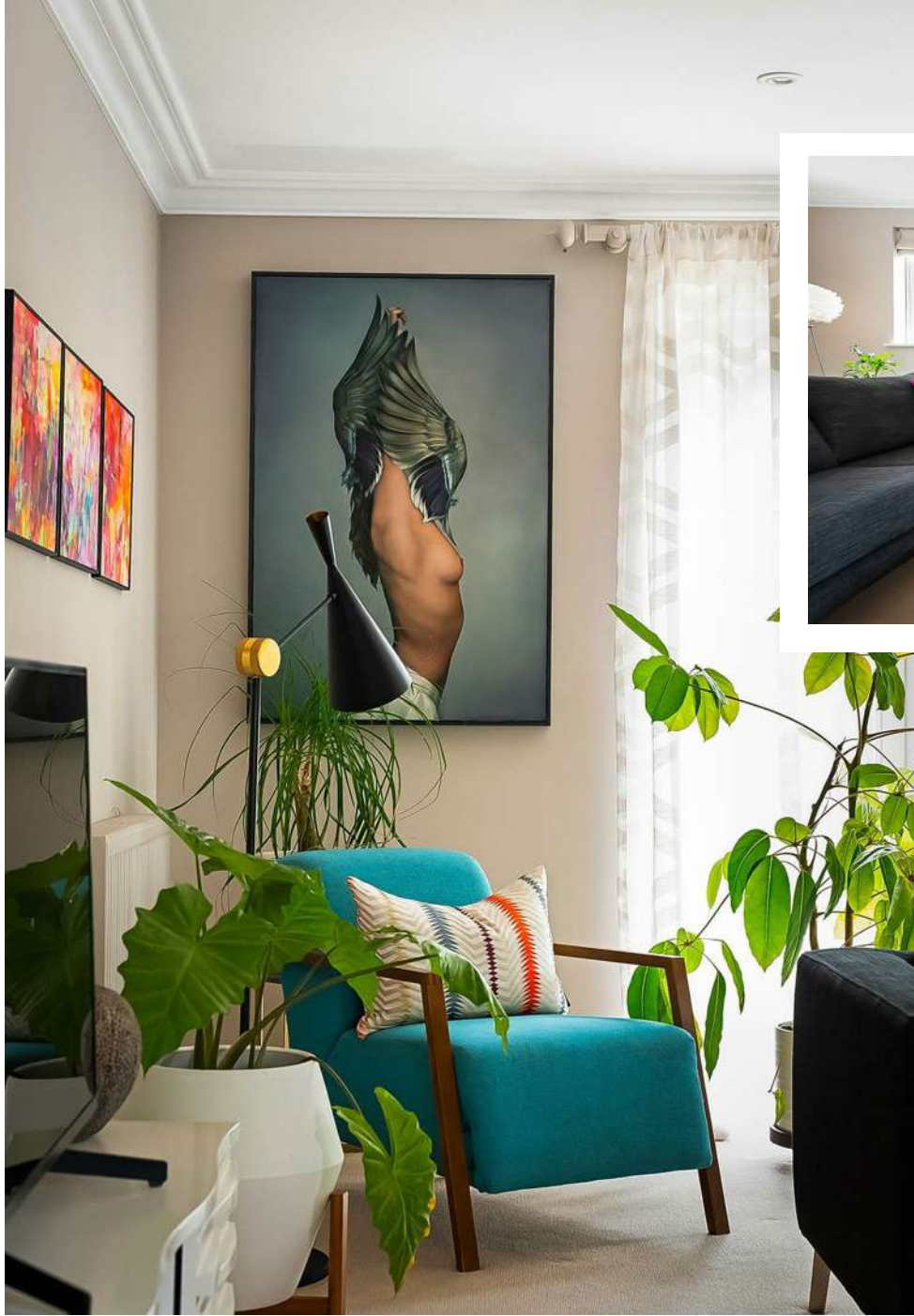
- Reception hall
- Drawing room
- Dining room and family room
- Kitchen / breakfast room, utility room and cloakroom
- Principal bedroom with dressing room and en suite bathroom
- 6 further bedrooms (4 en suite) and family bathroom
- Detached garage and gym, with studio above
- Landscaped garden, swimming pool and pool room with shower
- Gated block paved driveway and parking area
- In all about 0.88 acres; EPC: C



h.



h.



h.



h.



properties perfectly presented

h.



h.



h.



h.



properties perfectly presented



h.



h.

properties perfectly presented



h.



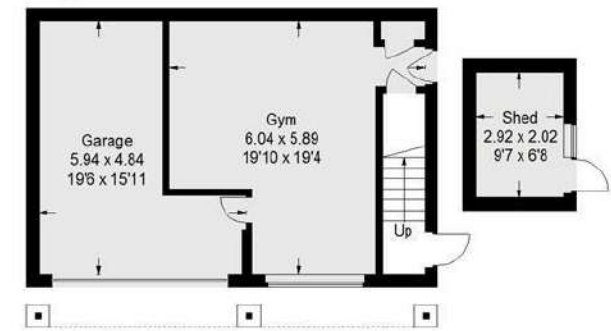
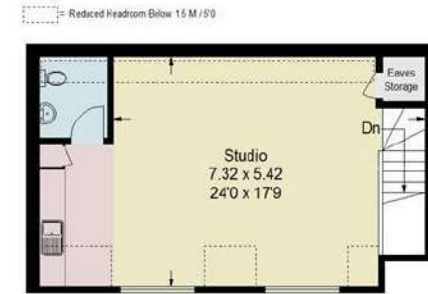
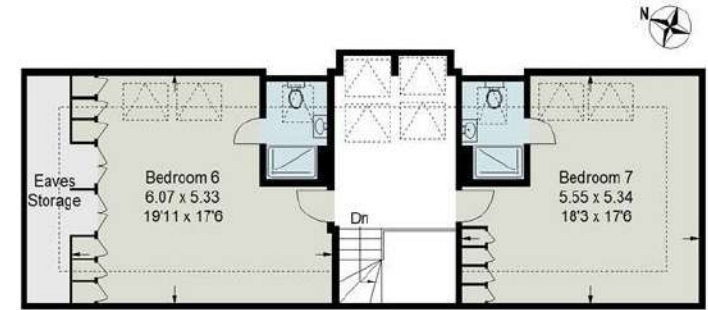
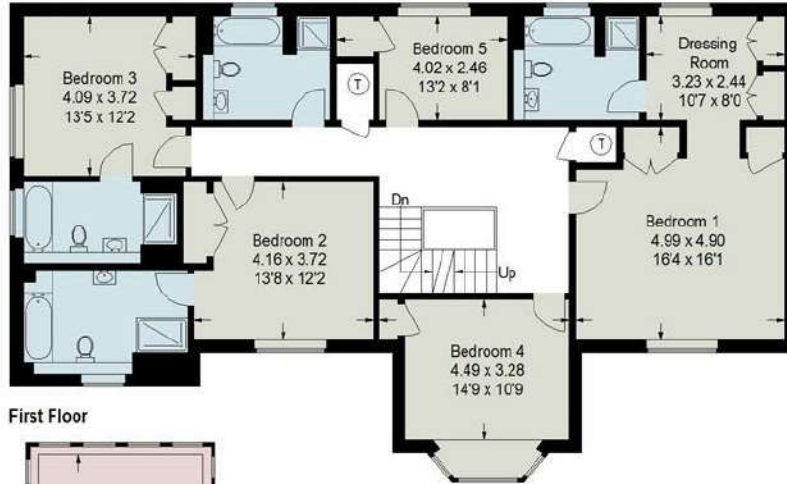
h.



properties perfectly presented



h.



Total = 531.7 sq m / 5723 sq ft
 Approximate Gross Internal Area (Excluding Eaves) = 424.2 sq m / 4566 sq ft, Outbuildings = 107.5 sq m / 1157 sq ft
 This plan is for layout guidance only, measurements are Approximate, not to scale. Home Exposure Limited © 2025

h.



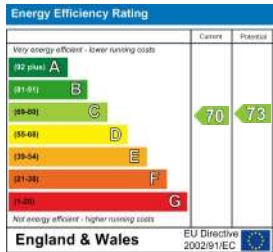
HOUSE INFORMATION

Total gross internal area: House 4,566 sq ft / 424.2 sq m. Outbuildings 1,157 sq ft / 107.5 sq m. Total 5,723 sq ft / 531.7 sq m.

Services: Mains water and electricity. Private drainage. Oil-fired central heating. LPG for the cooker.

Local authority: Waverley Borough Council. Tel: 01483 523333.

Viewing: Strictly by appointment: house. Partnership - 01483 266 706 Knight Frank - 01483 565 171



t. 0800 917 0447

w. housepartnership.co.uk

f in p @