



Gordon Avenue  
East Sheen, SW14

CHESTERTONS





This impressive semi-detached house boasts over 3,000 square feet of versatile living space, perfectly positioned on a generous corner plot with ample off-street parking for multiple vehicles.

The wide, lateral layout features a stunning 30' x 25' reception room flowing seamlessly into a modern kitchen, complete with a large breakfast table—ideal for family gatherings. An additional family room offers flexible use as a gym, cinema room, or play area. The bright sunroom opens onto a mature, tree-surrounded garden, presenting a fantastic opportunity for re-landscaping. Side access from the corner plot leads to both the house and garden, where extra parking is available.

Practicality is key, with a convenient downstairs toilet and shower room. The main entrance is set to the front, complemented by a front garden providing further off-street parking.

Previously adapted for extended family living, the property includes a semi-self-contained one-bedroom apartment on the first floor and a studio room in the attic. These can easily be retained or the house reverted to a traditional five-bedroom layout. The home also benefits from the rare luxury of five bathrooms.

Situated in the sought-after Parkside location, just minutes' walk from popular primary and secondary schools, as well as Palewell Common and Richmond Park, this wonderful family home offers excellent value for those seeking spacious accommodation.

Sold chain-free with vacant possession.

- 3000+ Sq.ft
- Five bedrooms and Five Bathrooms
- Corner Plot with Substantial Parking
- Semi-Detached
- Sough-after Parkside Location
- No Chain and Vacant Possession

Guide Price £1,800,000

**Tenure:** Freehold

**Local Authority:** London Borough of Richmond upon Thames

**Council Tax Band:** F

***Chestertons East Sheen Sales***

254A Upper Richmond Road West

East Sheen

London

SW14 8AG

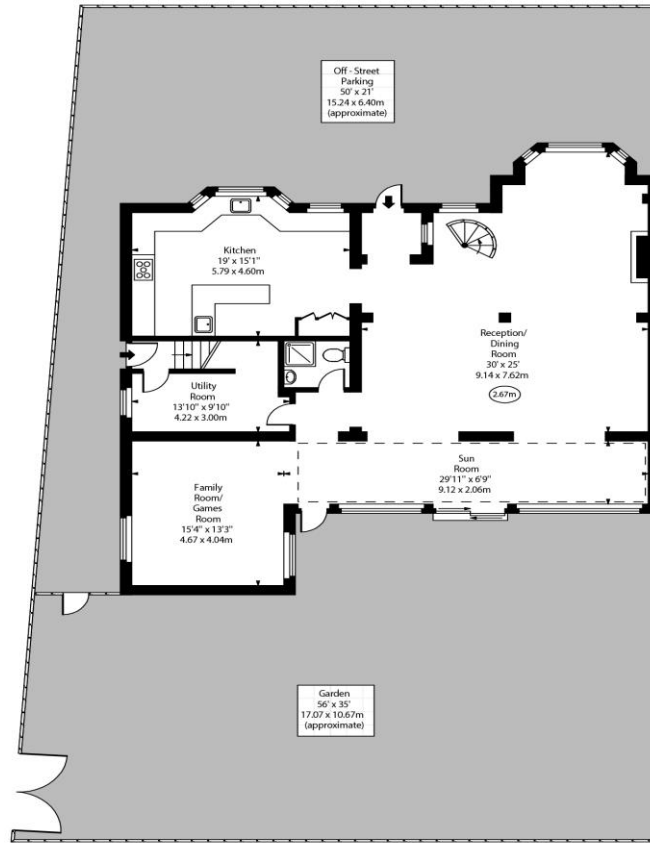
sheen@chestertons.co.uk

020 8104 0580

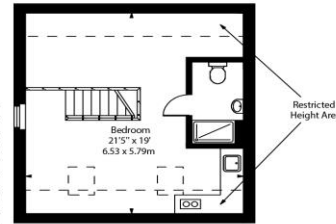
Gordon Avenue,  
East Sheen, SW14



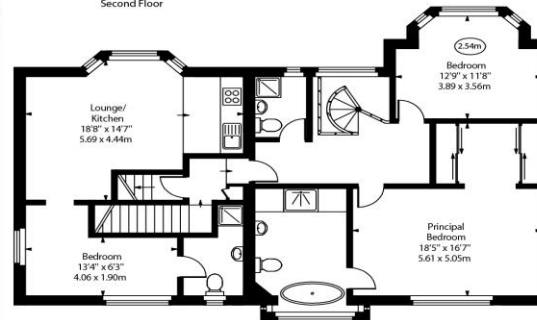
○ - Ceiling Height



Ground Floor



Second Floor



First Floor

Approx Gross Internal Area 3070 Sq Ft - 285.20 Sq M  
Approx. Floor Area Including Restricted Heights 3165 Sq Ft - 294.03 Sq M

Every attempt has been made to ensure the accuracy of the floor plan shown. However, all measurements, fixtures, fittings, and data shown are approximate interpretations and for illustrative purposes only. Measured according to the RICS. Not To Scale.  
www.gskdrens.co.uk  
Ref. No. 022019E

Chesterton UK Services Limited trading as Chest without responsibility on the part of Chestertons inspection or otherwise as to the correctness of details to this property. Wide angle lenses may be used.

Details contained within these particulars are made ending purchasers must satisfy themselves by presentation or warranty whatsoever in relation



This paper is  
100% recyclable