

Heath Road Uttoxeter, Uttoxeter, ST14 7LX

Early interest is highly encouraged ahead of the full release of this individually designed new home, with anticipated completion scheduled between spring and summer 2026.

This striking three-storey bespoke residence has been thoughtfully designed to combine contemporary style with practical family living, all set within one of Uttoxeter's most desirable locations. The ground floor showcases an impressive open-plan kitchen, dining and living space, flooded with natural light and enhanced by bi-folding doors opening onto the rear garden. This level is further complemented by a separate utility room and a cloakroom WC.

To the first floor, the property offers an outstanding principal bedroom suite complete with a dressing area and a luxurious en-suite, alongside a further generous double bedroom and a stylish Jack and Jill shower room. The second floor continues to impress with two well-proportioned bedrooms and a beautifully appointed family bathroom.

£500,000

Heath Road

Uttoxeter, Uttoxeter, ST14 7LX



DISCLAIMER

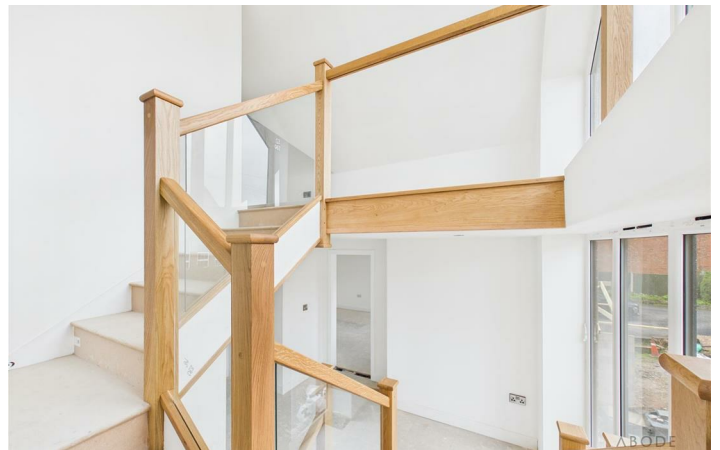
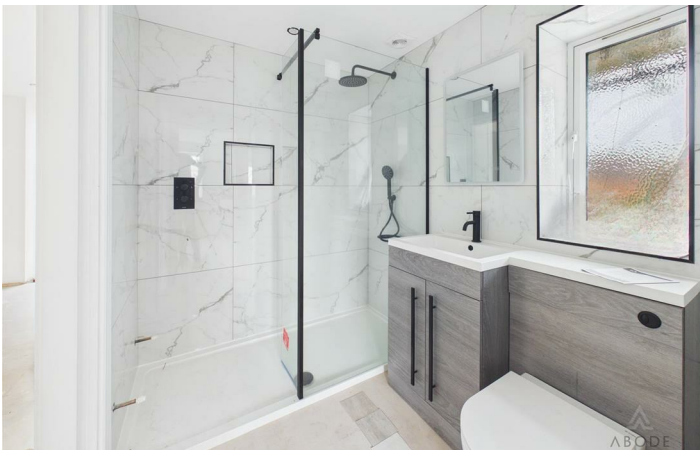
Ground Floor

First Floor

Second Floor



Directions



Floor Plan



These particulars, whilst believed to be accurate are set out as a general outline only for guidance and do not constitute any part of an offer or contract. Intending purchasers should not rely on them as statements of representation of fact, but must satisfy themselves by inspection or otherwise as to their accuracy. No person in this firm's employment has the authority to make or give any representation or warranty in respect of the property.

Racecourse Chambers Town Meadow Way, Uttoxeter, Staffordshire, ST14 8EW
 Tel: 01889 567777 Email: uttoxeter@abodemidlands.co.uk <https://www.abodemidlands.co.uk>

