

## Oakhill Road, SW15

£550,000

A well-presented two double bedroom apartment set on the top floor of an attractive period building on the sought after Oakhill Road. The property offers a spacious reception room on the top floor with ample natural light. The floor below has two good size double bedrooms and a separate kitchen.

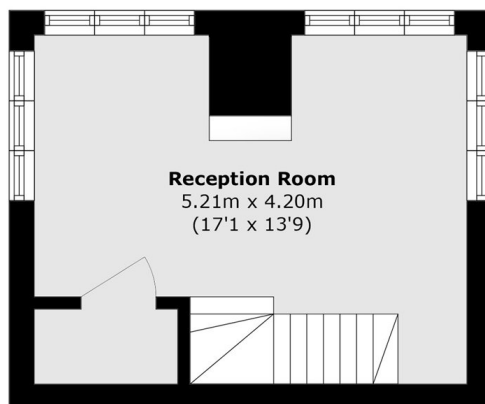
The flat also has access to the beautiful south facing communal garden.

Oakhill Road is very conveniently located, 0.2 miles, or less than 5 minutes walk, to East Putney Underground station on the District Line, as well as road and rail transport links in and out of Putney and the varied amenities of Putney High Street.

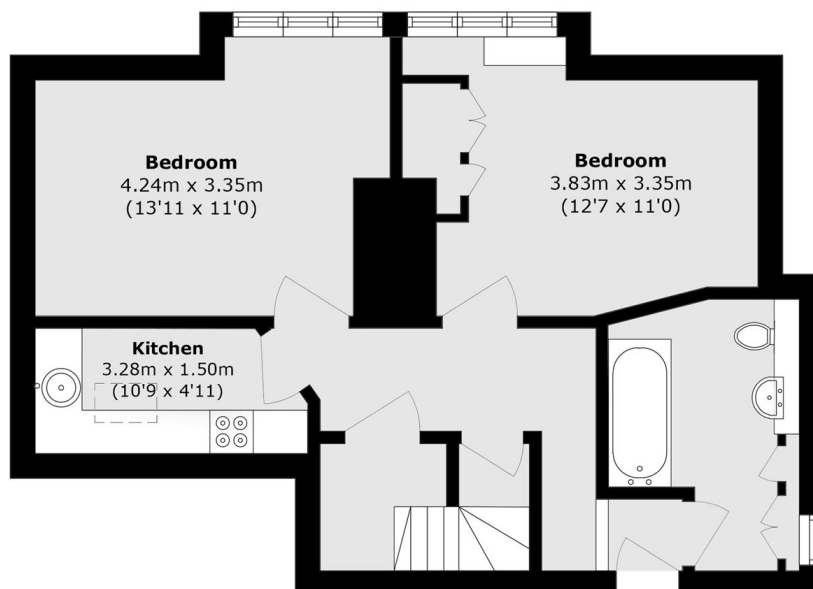
### Features

- Two Bedrooms
- One Bathroom
- Share of Freehold
- Communal Gardens
- Split Level
- Moments from East Putney Station

# Oakhill Road, London, SW15



**Third Floor**



**Second Floor**

Total area (approx.): 72.2 sq. m (777.1 sq. ft)