



Noko, Banister Road W10

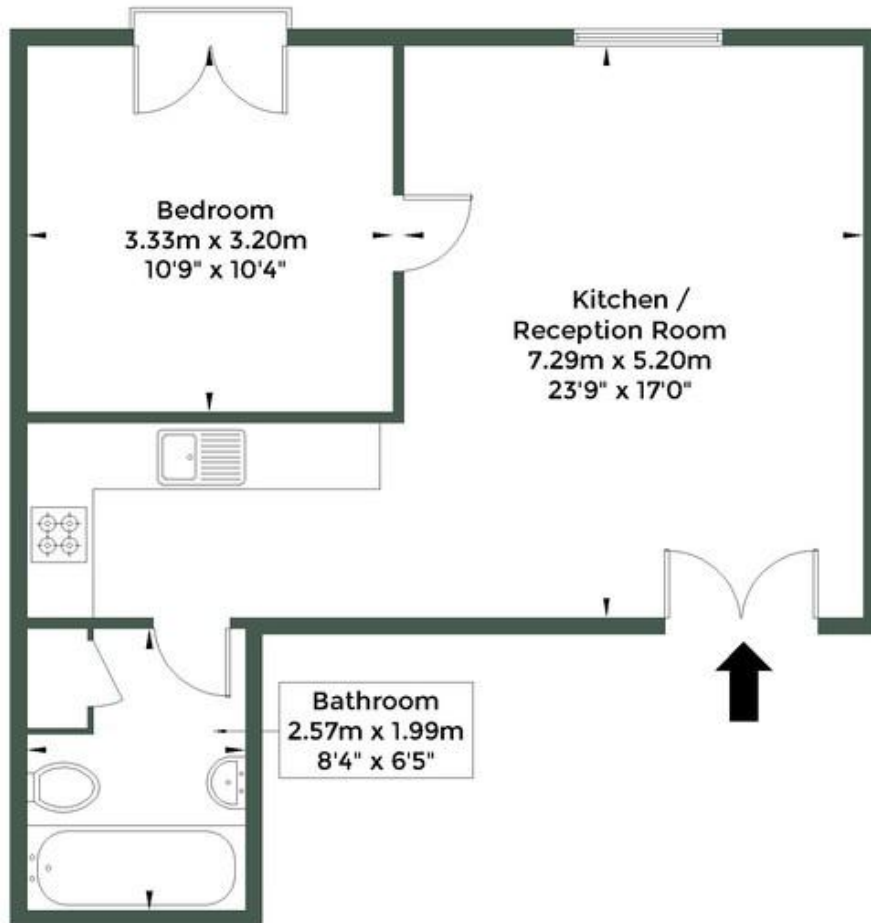
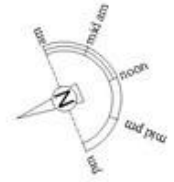
£365,000 Leasehold

Discover urban elegance at its finest in this second floor apartment located within the modern gated block of "Noko" on Banister Road, W10. Featuring a thoughtfully designed one-bedroom layout with an inviting open-plan kitchen living space, this residence exudes contemporary charm. Hardwood flooring adds a touch of sophistication to the interior, enhancing the overall ambiance. Situated just off Chamberlayne Road, residents benefit from easy access to a diverse array of local amenities, including shops, cafés, and restaurants, catering to every need and preference. Multiple transport links to Central London ensure effortless connectivity to the heart of the city, making commuting a breeze. With a 105-year lease included, along with the option to secure parking within the sale, this property presents an exceptional opportunity for modern living in a coveted location. Don't miss your chance to experience the perfect blend of style, convenience, and urban sophistication in this desirable home.

- Second floor apartment
- Secure block
- Double bedroom
- Great Location
- Open plan kitchen living area
- Good condition
- Communal garden
- 105 year lease
- Bright and airy
- Close to shops and transports

Banister Road, W10 4AR

Approx Gross Internal Area = 45 sq.m / 484 sq.ft



Second Floor



The Floor plan is not to scale and measurements and areas shown are approximate and therefore should be used for

MONEY LAUNDERING REGULATIONS 2003: Intending purchasers will be asked to produce identification documentation at a later stage and we would ask for your co-operation in order that there will be no delay in agreeing the sale.

General: While we endeavour to make our sales particulars fair, accurate and reliable, they are only a general guide to the property and, accordingly, if there is any point which is of particular importance to you, please contact the office and we will be pleased to check the position for you, especially if you are contemplating travelling some distance to view the property.

Measurements: These approximate room sizes are only intended as general guidance. You must verify the dimensions carefully before ordering carpets or any built-in furniture.

Services: Please note we have not tested the services or any of the equipment or appliances in this property, accordingly we strongly advise prospective buyers to commission their own survey or service reports before finalising their offer to purchase.