

Frank Harris & Co.



Lothbury, City of London, EC2R

£835,000

A unique one bedroom apartment, with the original wooden panelling in the spacious reception room, an abundance of light from the large sash windows, a contemporary kitchen, bedroom with an ensuite shower room and a separate WC. There is also a storage room allocated to the flat in the basement. Situated on the second floor of this delightful Grade II listed building opposite the Bank of England it is one of the finest examples of Venetian Gothic revival.



The apartment has many superb features with a Bose lifestyle audio system, heating and cooling system, bespoke joinery with a lot of built in storage in the bedroom, lift access, washing machines and tumble dryers in the basement and CAT5 cabling. The building is by far one of the most spectacular the city has to offer.

The building was designed by the celebrated RIBA architect George Somers Clarke in the late 1860's who also worked on the designs for the Palace of Westminster. Once completed, it became the head office for the General Credit and Discount Company, later the home of brokers and merchants Speyer Brothers, The National Bank of Australia, stockbrokers Laurie Milbank & Co, and a private dining club for the Overseas Bankers' Club.

Converted into luxury apartments, the building was restored to its former glory by architects Smith Brooke and were awarded the 2007 City Heritage award, using thoughtful architecture and contemporary finishes to create the perfect space for City living.

The city offers superb shopping facilities with One New Change located on Cheapside and boutique options at The Royal Exchange where you will find luxury brands such as Hermes, Fortnum and Mason, Tiffany and Co, Boodles and Aspinall of London.

There are a plethora of restaurants and coffee shops nearby.

Within proximity to London landmarks such as St Paul's Cathedral, The River Thames, The Tower of London and The Shard as well as being in the centre of the banking and legal districts of London.

With a number of five star hotels nearby including The Ned with its 10 restaurants, spa and private members club.

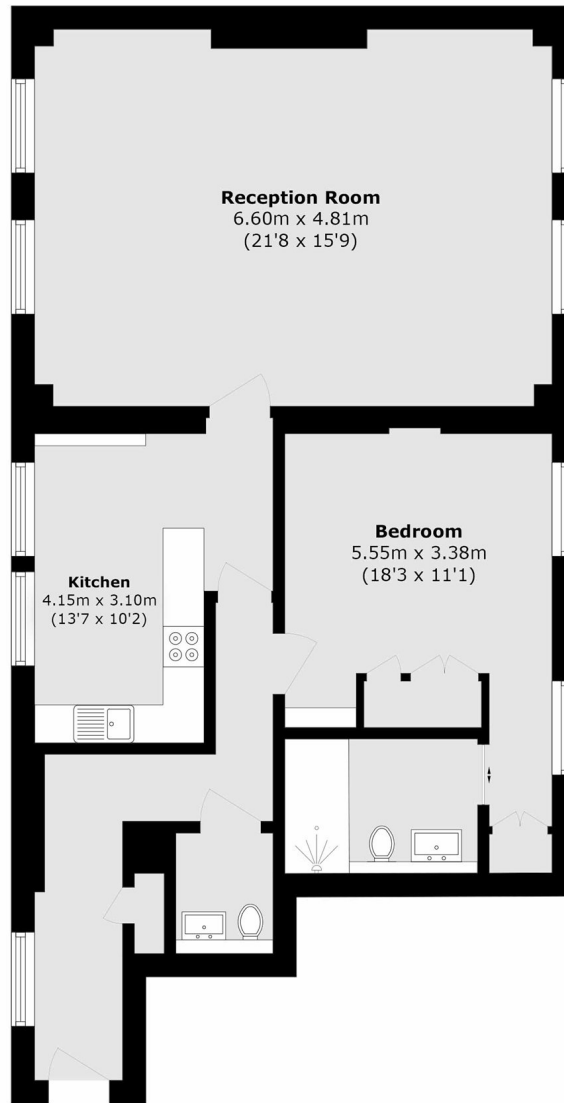
Lothbury is conveniently located with Bank Station (Central, Northern, Waterloo and City and DLR lines) and Liverpool Street Station (Circle, Hammersmith and City, Metropolitan, Elizabeth lines and Mainline access) moments away.







Frank Harris & Co.



Total area (approx.): 76.0 sq. m (818.0 sq. ft)

Frank Harris & Co. Barbican and City
87 Long Lane, London,
EC1A 9ET
020 7600 7000
citysales@frankharris.co.uk

Energy Rating: D. We aim to make our particulars both accurate and reliable. However they are not guaranteed; nor do they form part of an offer or contract. If you require clarification on any points then please contact us, especially if you're traveling some distance to view. Please note that appliances and heating systems have not been tested and therefore no warranties can be given as to their good working order.

